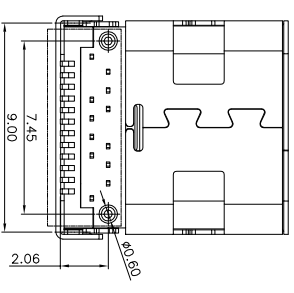
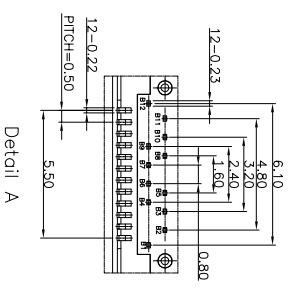
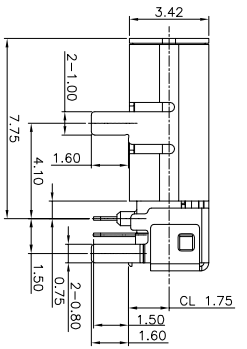
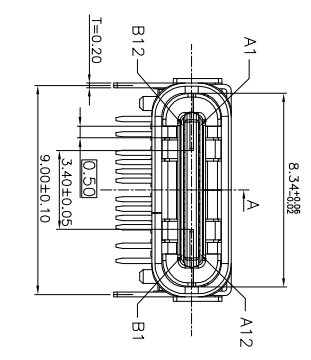
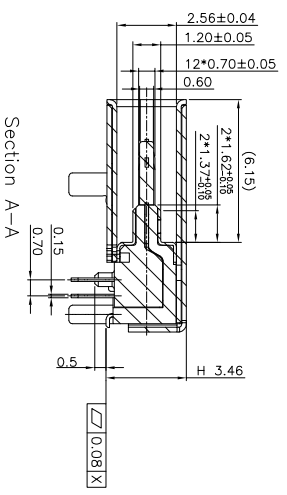
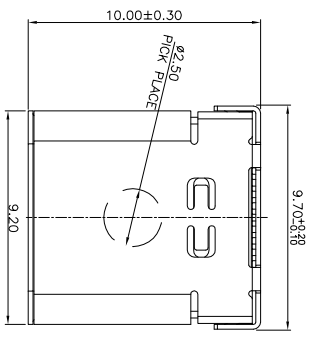


ROHS 客户图



目錄 MAPX	變更內容 MODIFICATION	日期 DATE
A0	NEW	09-10-20

NOTES:

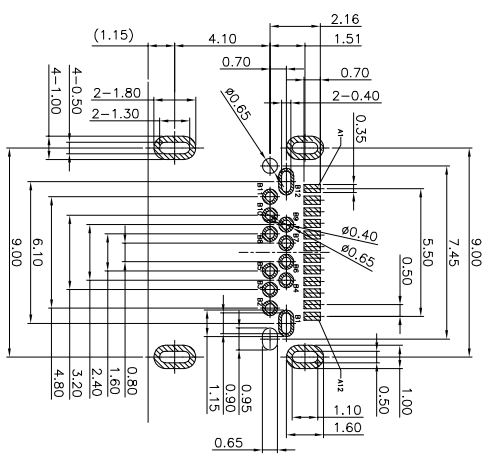
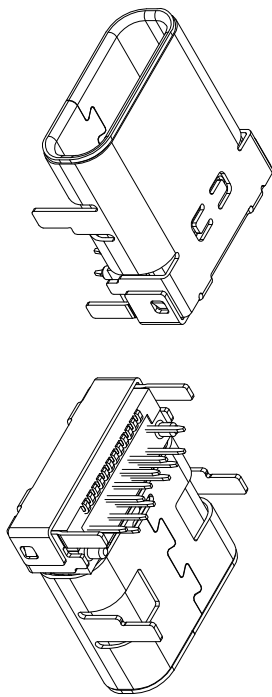
1. MATERIAL: MOLDING: LCP UL94 V-0
CONTACT: COPPER ALLOY.
GOLD PLATED Min ON CONTACT AREA, 100u"
Min TIN (LEAD FREE) ON SOLDER AREA,
SHELL: SUS304-H,T=0.20±0.03mm
50u" NICKEL PLATING OVER ALL.
SHLD:SUS304-H,T=0.12±0.03mm
2. MECHANICAL: INSERTION: 5~20N.
EXTRACTION: 8~20N AFTER TEST.
DURABILITY: 10000 CYCLES
3. ELECTRICAL: CURRENT: 5A FOR VBUS;
1.25A FOR GND PIN.
0.25A FOR OTHER.
VOLTAGE: 20 V MAX
WITHSTANDING VOLTAGE: 100V AC R.M.S.
CONTACT RESISTANCE: 40mΩ MAX.
INSULATION RESISTANCE: 100MΩ MIN.
4. ENVIRONMENTAL TEMPERATURE RANGE -55°C ~ +85°C

产品图

公差一览表
TOLERANCE UNLESS OTHERWISE SPECIFIED

单位 UNITS	MM	制图 DRAWING	王冠	产品料号 PRODUCT PART NO.	XFLF001-UCAF010-X
比例 SCALE	1:1	审核 CHECK	雷永健	产品名称 PRODUCT NO.	TYPE C焊盘板上双充前插后插2P L=10.0
日期 DATE	2009/10/20	核准 APPD	雷永健	角法 VIEW	版本 VER
	.XXX ±0.15				A0
	.XX ±0.50				
	.X ±0.25				
	X ±0.50				
	X ±0.30				
	X ±0.50				

RoHS 客户图



RECOMMEND P.C.B LAYOUT(COMPONENT SIDE)
TOLERANCE FOR PCB LAYOUT IS ± 0.05

目錄 MAPX	變更內容 MODIFICATION	日期 DATE
A0	NEW	09-10-20

Pin	Signal Name	Description	Pin	Signal Name	Description
A1	GND	Ground return	B12	GND	Ground return
A2	SSTx01	Positive half of First SuperSpeed TX differential pair	B11	SSRx01	Positive half of First SuperSpeed RX differential pair
A3	SSTx01	Negative half of First SuperSpeed TX differential pair	B10	SSRx01	Negative half of First SuperSpeed RX differential pair
A4	Vss	Bus Power	B9	Vss	Bus Power
A5	CC1	Configuration Channel	B8	SR02	Standard Use (SR0)
A6	Dp1	Positive half of the USB 2.0 differential pair-Position 1	B7	Im2	Negative half of the USB 2.0 differential pair-Position 2
A7	Dm1	Negative half of the USB 2.0 differential pair-Position 1	B6	Im2	Positive half of the USB 2.0 differential pair-Position 2
A8	SR01	Standard Use (SR0)	B5	CC2	Configuration Channel
A9	Vss	Bus Power	B4	Vss	Bus Power
A10	SSRx02	Negative half of second SuperSpeed RX differential pair	B3	SSTx02	Positive half of second SuperSpeed TX differential pair
A11	SSRx02	Positive half of second SuperSpeed RX differential pair	B2	SSTx02	Negative half of second SuperSpeed TX differential pair
A12	GND	Ground return	B1	GND	Ground return

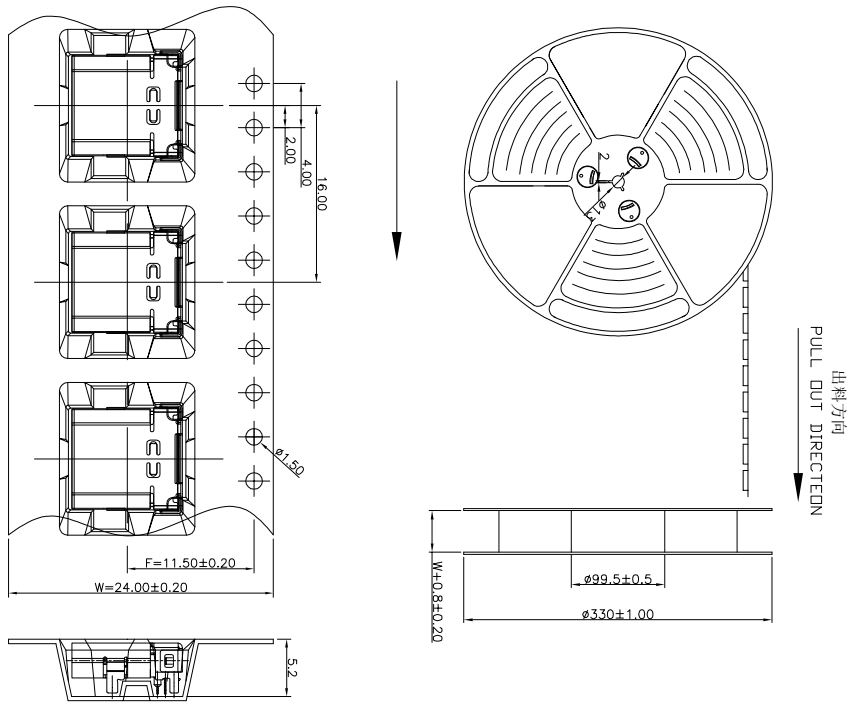
产品图

公差一览表

深圳市鑫风雷电电子有限公司

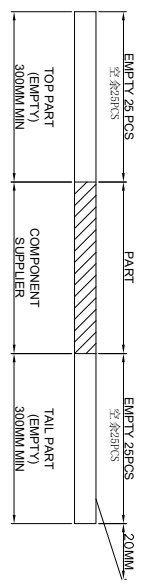
PRODUCT CHART DWG		单位 UNITS		MM	制图 DRAWING	王冠	产品料号 PRODUCT PART NO.	XHLP001-UCAP010-X
TOLERANCE UNLESS OTHERWISE		X'	±5°	1:1	审核 CHECK	雷永健	产品名称 PRODUCT NO.	TYPE C母座板上双壳充电插后盖2HP L=10.0
X	±0.30	X'	±2'	日期 DATE	核准 APPD	雷永健	角法 VIEW	版本 VER
XXX	±0.15	.XXX'	±0.5'	2009/10/20				A0

RoHS 客户图



NOTES

1. 带子引导长度
LEAD TAPE LENGTH
出料方向
PULL OUT DIRECTION



2. 上带 剥力为: 0.1~1.3N(10.2gf~130gf)
PEELING OFF FORCE OF TOP TAPE: 0.1~1.3N(10.2gf~130gf)
出料运输过程中一定要注意:
THIS REQUIREMENT SHOULD BE APPLIED AT SHIPMENT:
卷带在运输过程中不能数脚
PEELING OFF SHOULD NOT BE ALLOWED DURING TRANSPORTATION



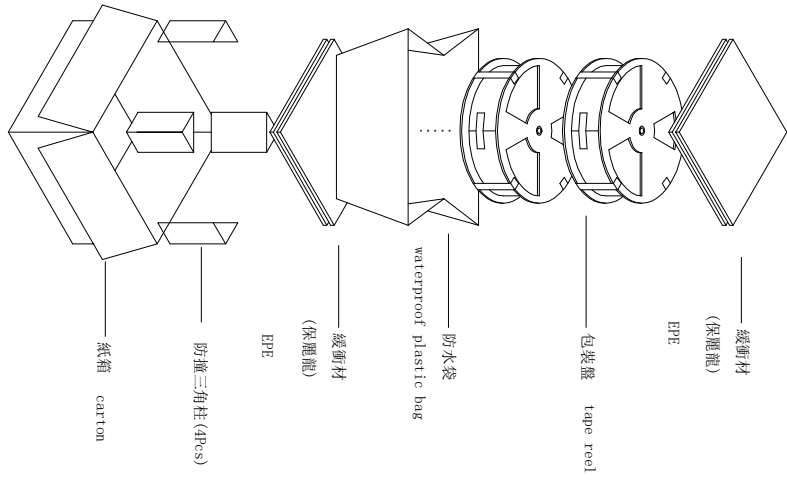
产品图

深圳市鑫风雷电子有限公司

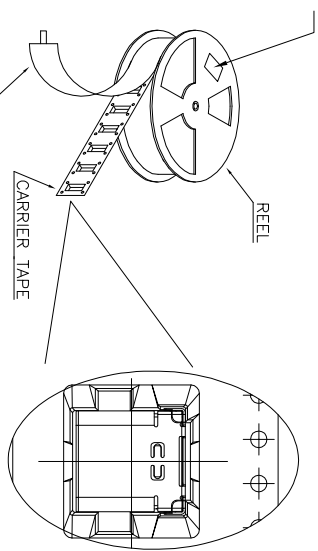
PRODUCT CHART DWG

公差一览表		单位	MM	制图	王冠	产品料号	XFLF001-UCAF010-X	
TOLERANCE UNLESS OTHERWISE		UNITS		DRAWING		PRODUCT PART NO.		
X	±0.30	X'	±5°	审核	雷永健	产品名称	TYPE C焊盘板上双完前插后贴24P L=0.0	
X	±0.25	X'	±2'	比例	1:1	角法	⊕ □	
XX	±0.30	XX'	±1'	日期	2009/10/20	版本	A0	
.XXX	±0.15	.XXX'	±0.5'	核准	雷永健	角法	⊕ □	
				APPD		版本	A0	

RoHS 客户图



at small positioning hole of the carrier tape side.
標簽黏貼處 (朝捲裝包材的小定位孔一側)
Location of label sticking (label)



NOTE:

1. 每捲包裝數量及每箱裝箱數量如左下表格
Packing qty of each reel & carton as below table shown.
2. 以上膠帶覆蓋下包裝帶經包裝機熱熔包裝
Use cover tape to seal up.
3. 每個紙箱放2個珍珠棉
Every carton use 2pcs EPE.
4. 將裝滿產品的卷盤放入紙箱並以膠帶封口
Put reels in the carton and use adhesive tape to seal up.

產品圖

深圳市鑫風雷電子有限公司

公差一覽表		單位	MM	制圖	王冠	產品料號	XFLF001-UCAR010-X
TOLERANCE UNLESS OTHERWISE		UNITS		DRAWING		PRODUCT PART NO.	
X	±0.30	X'	±5°	審核	雷永健	產品名稱	TYPE C焊盤板上: 雙光前插后貼24P I=0.0
X	±0.25	X'	±2'	核准	雷永健	角法	
XX	±0.30	XX'	±1'	日期	2009/10/20	版本	A0
.XXX	±0.15	.XXX'	±0.5'	核准	雷永健	角法	
		DATE		APPD		VIEW	

產品料號 (PRODUCT No.)	包裝容量 (PACKING CAPACITY)	重量 WEIGHT (Kg)
XFLF001-UCAR010-X	PCS/REEL 700	PCS/CARTON 5600
	REELS/CARTON 8	N.W./PCS 0.704
		N.W./BOX G.W./BOX