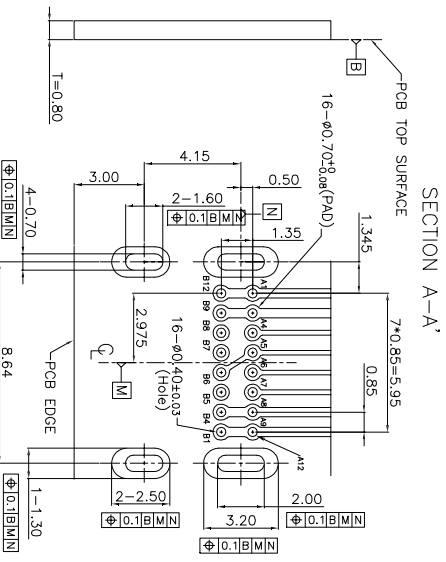
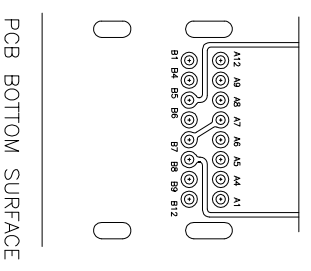
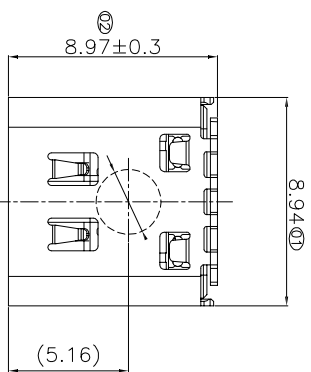
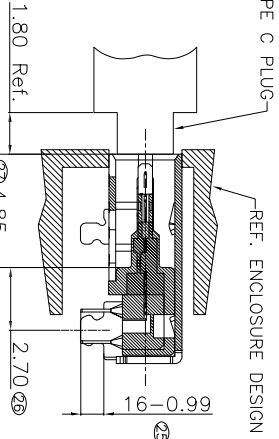
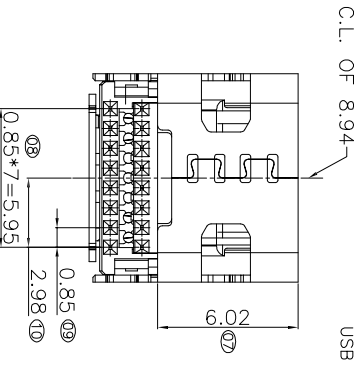
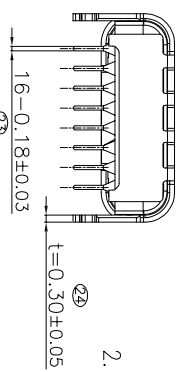
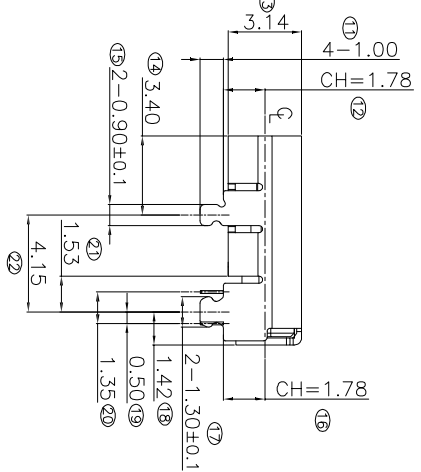
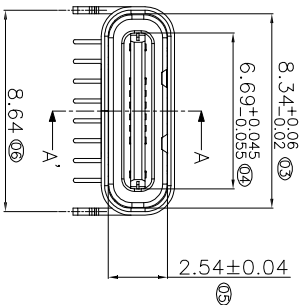


# ROHS 客户图

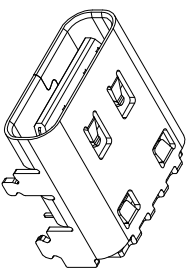


RECOMMENDED P.C.B LAYOUT  
GENERAL TOLERANCE: ±0.05  
PCB TOP SURFACE

MAPX	MODIFICATION	DATE
A0	NEW	09-10-20

**NOTE:**

- Material: All Housing: LCP Block, Thermoplastics, UL94V-0 (Halogen Free).  
Contact: Copper Alloy  
Shell: Stainless Steel.  
Mid Shell Plate: Stainless Steel.
- FINISH:  
Contact: Au 50u" Plated on Contact Area,  
80u" Min. Bright Tin Plated on Solder Area  
30u" Min. Nickel Underplating Over All.
- Shell: 50u" Min. Nickel plated Over All.
- Specification:  
3.1: Electrical:  
Current Rating: 5A For Pin(A4,A9,B4,B9), 1.25A For Others Pin  
Insulation Resistance: 100MΩ Min.  
Contact Resistance: 50 mΩ Max.  
Dielectric Withstanding Voltage: 100V/AC 1minute  
3.2: Mechanical Characteristics:  
Insertion Force: 5~20N  
Extraction Force: 0~1000 Cycles 8~20N,  
1000~10000 Cycles 5~20N  
Durability :10000 Cycles  
4. Recommended process IR REFLOW:260°C, 3~5seconds.



PIN ASSIGNMENT			
PIN NUMBER	SIGNAL NAME	PIN NUMBER	SIGNAL NAME
A1,A12,B1,B12	GND		
A2	SSTXp1	B11	SSRXp1
A3	SSTXn1	B10	SSRXn1
A4,A9,B4,B9	VBUS		
A5	CC1	B8	SRU2
A6	D+	B7	D-
A7	D-	B6	D+
A8	SBU1	B5	CC2
A10	SSRXp2	B3	SSTXn2
A11	SSRXn2	B2	SSTXp2

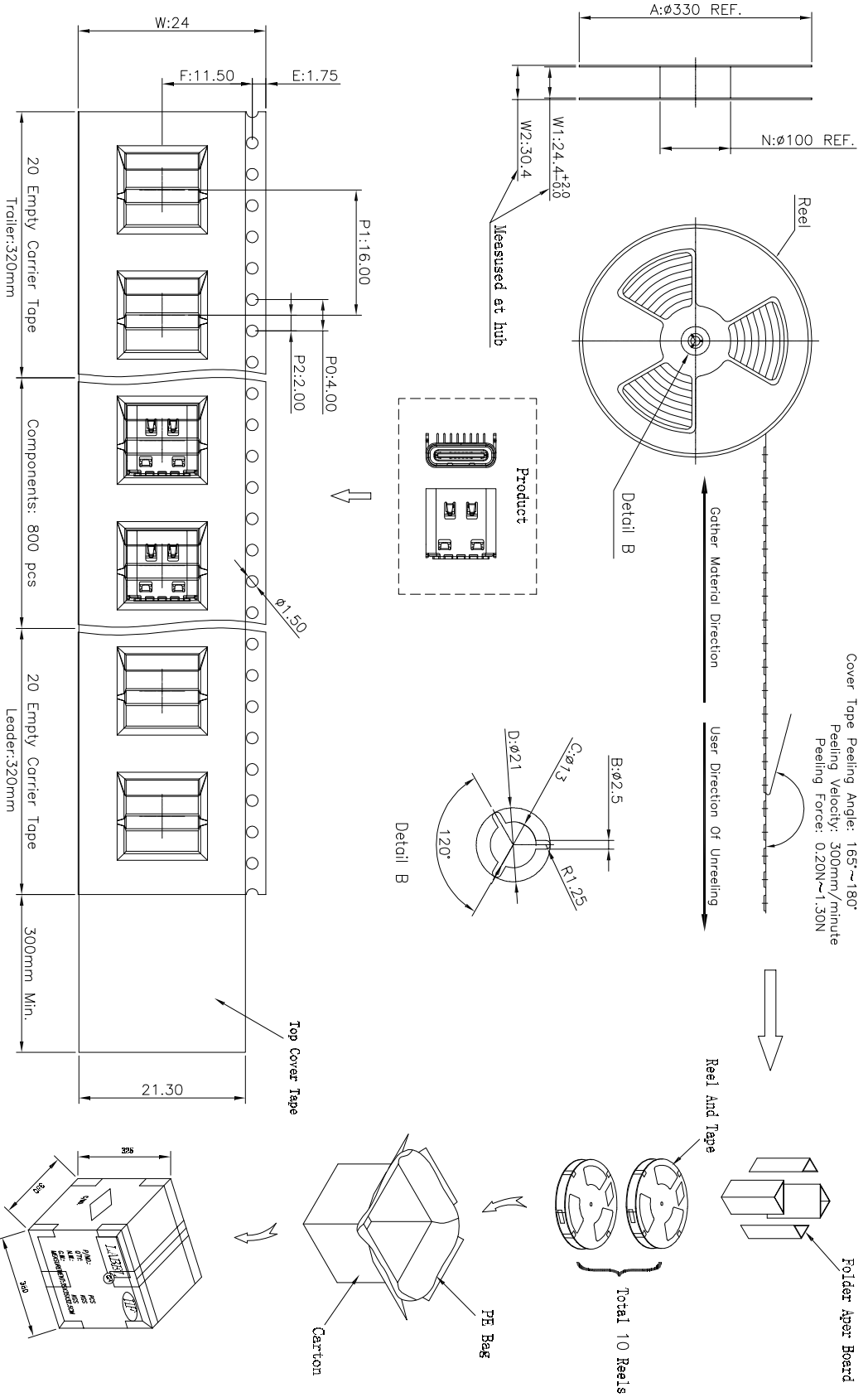
## 深圳市鑫风雷电子有限公司

公差一览表	
TOLERANCE UNLESS OTHERWISE	公差一览表
X ±0.30	X' ±5°
X ±0.25	X" ±2°
XX ±0.30	XX' ±1°
XXX ±0.15	XXX' ±0.5°

PRODUCT CHART DWG	单位	MM	制图	王冠	产品料号	XFLG003-UCAF002-X
	SCALE	1:1	审核	雷永健	产品名称	TYPE C 16P母座双排插板90度
	DATE	2009/10/20	核准	雷永健	PRODUCT NO.	
			APPD		角法	版本
					VIEW	A0

# ROHS 客户图

MAPX	MODIFICATION	DATE
A0	NEW	09-10-20



Note:  
Quantity/Reel: 800pcs  
Quantity/Carton: 800pcs\*10=8Kpcs

## 产品图

## 深圳市鑫风雷电子有限公司

公差一览表		单位	MM	制图	王冠	产品料号	XF1G003-UCAR002-X	
TOLERANCE UNLESS OTHERWISE		UNITS		DRAWING		PRODUCT PART NO.		
X	±0.30	X'	±5'	审核	雷永健	产品名称	TYPE C 16P母座双排插板90度包装载带	
X	±0.25	X''	±2'	核准	雷永健	PRODUCT NO.	TYPE C 16P母座双排插板90度包装载带	
XX	±0.30	XX'	±1'	日期	2009/10/20	角法	版本	
XXX	±0.15	XXX'	±0.5'	核准	APPD	VIEW	A0	