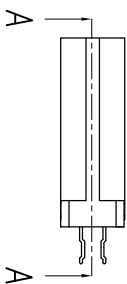
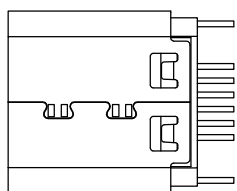
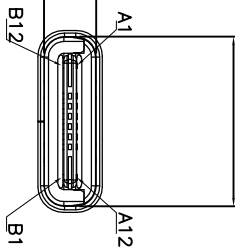


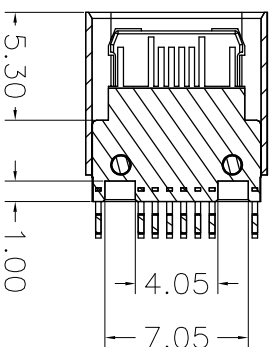
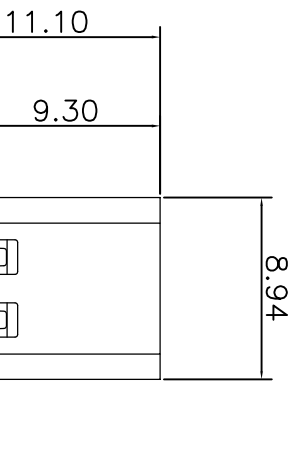
# RoHS 客户图

目錄 MAPX	变更内容 MODIFICATION	日期 DATE
A0	NEW	09-10-20

2.56±0.04



- NOTES:  
SPECIFICATION:
- CURRENT RATING: 5.0A MAX
  - VOLTAGE: 100 VAC
  - TEMPERATURE RANGE: -30 °C ~ 85 °C
  - CONTACT RESISTANCE: 40 MILLIONHM MAX
  - INSULATION RESISTANCE: 100 MEGOHMS MIN.
  - INSERTION FORCE: 5N~20N
  - UNMATING FORCE: 8N~20N
  - DURABILITY: 10,000 CYCLES



PIN	Signal Name	PIN	Signal Name
A1	GND	B12	GND
A2		B11	
A3		B10	
A4	VBUS	B9	VBUS
A5	CC1	B8	SUB2
A6	Dp1	B7	Dp2
A7	Dn1	B6	Dp2
A8	SUB1	B5	CC2
A9	VBUS	B4	VBUS
A10		B3	
A11		B2	
A12	GND	B1	GND

## 产品图

公差一览表  
TOLERANCE UNLESS OTHERWISE SPECIFIED

公差	单位
±0.30	MM
±0.25	MM
±0.30	MM
±0.15	MM

比例	日期	制图	审核	批准	产品料号	产品名称	角法	版本
1:1	2009/10/20	王冠	雷永健	雷永健	XPLS003-UCAP001-X	TYPE C 夹板母座12P L=9.3		A0