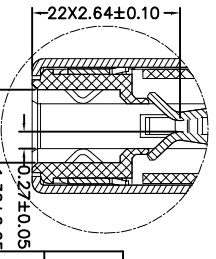
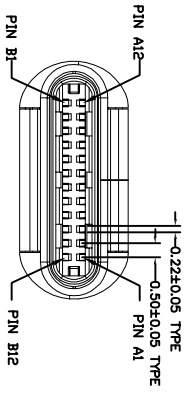
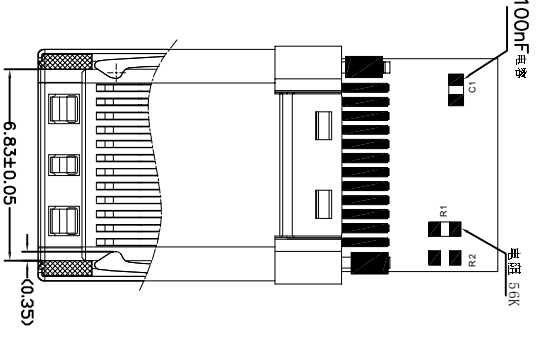
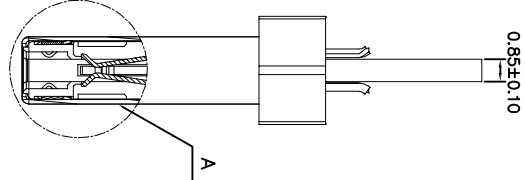
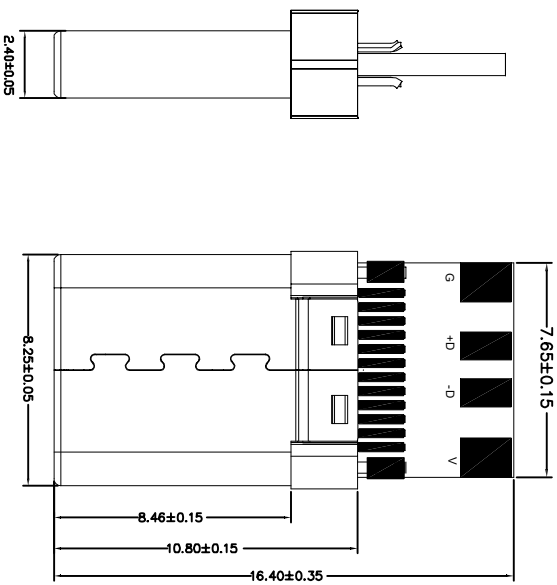
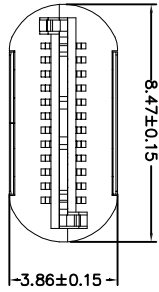


ROHS

客户图

目錄 MAPX	变更内容 MODIFICATION	日期 DATE
A0	NEW	09-10-20



Pin Number	host device	Pin Number	host device
Pin A1	GND	Pin B12	GND
Pin A2	SSTxp1	Pin B11	SSRxp1
Pin A3	SSTxp1	Pin B10	SSRxp1
Pin A4	VBUS	Pin B9	VBUS
Pin A5	CC1	Pin B8	SBU2
Pin A6	DP1	Pin B7	
Pin A7	DN1	Pin B6	CC2
Pin A8	SBU1	Pin B5	CC2
Pin A9	VBUS	Pin B4	VBUS
Pin A10	SSRxp2	Pin B3	SSTxp2
Pin A11	SSRxp2	Pin B2	SSTxp2
Pin A12	GND	Pin B1	GND

- 备注:
1. 材料: See Table A
 2. 电镀要求: See Table A
 3. 机械特性:
 - 插入力: 5-20N
 - 插出力: 8-20N, 1000次插拔后 (6-20N)
 - 耐久寿命: 10,000次
 4. 电气特性:
 - 接触电阻: 40mΩms Max(Initial)
 - 绝缘电阻: 100MΩms Min
 - 额定电流: 5A for VBUS(For M1/B9/B4/B9)
 - 1.25A for Veom and GND for A1/A12, B1/B5/B12)
 - 0.25A for all other contacts.
 5. 环境特性:
 - 工作温度: -25°C~80°C
 - 贮存温度: -25°C~80°C
 - 48H外露部位表面无氧化
 6. 使用物料及制程符合RoHS&RELF.

6	Latch	STAINLESS	Ni:50u"
5	Contact	COPPER ALLOY	Contact area: Au3f/ Solder tails: Sn80u", Ni:50u"
4	molding 2	L.C.P	(Black)
3	Limiter	STAINLESS	
2	Molding	L.C.P	(White)
1	Shell	STAINLESS	Ni:50u"

产品图

深圳市鑫风雷电子有限公司

公差一览表 TOLERANCE UNLESS OTHERWISE		单位 UNITS	MM
X	±0.30	X'	±5'
X	±0.25	X'	±2'
XX	±0.20	XX'	±1'
XXX	±0.15	XXX'	±0.5'

比例 SCALE	1:1
日期 DATE	2009/10/20
制图 DRAWING	王冠
审核 CHKD	雷永健
批准 APPD	雷永健
产品料号 PRODUCT PART NO.	XFLY012-UCAM005-X
产品名称 PRODUCT NO.	TYPE C公头冲压壳C-2数据板
角法 VIEW	版本 VER
	A0