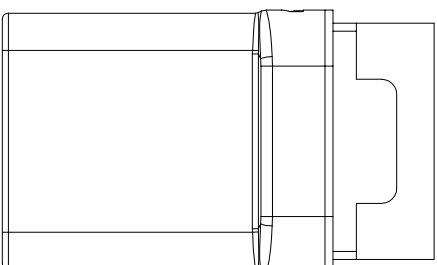
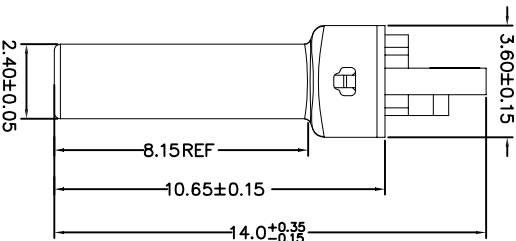
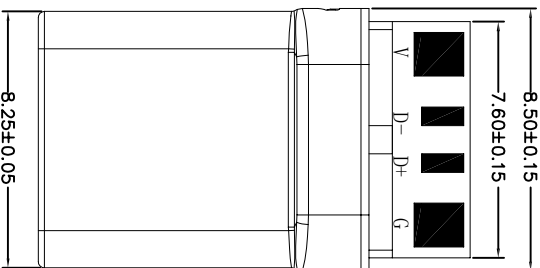
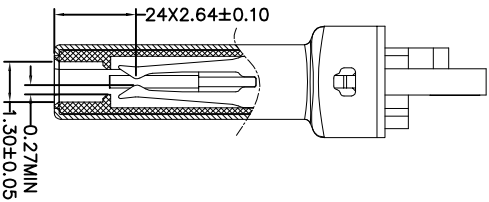
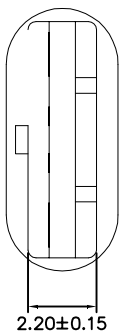
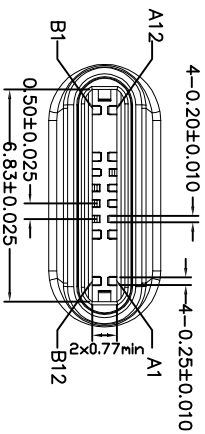


# ROHS 客户图



Pin Number	host	device	Pin Number	host	device
PinA1	GND	GND	PinB12	GND	GND
PinA4	VBUS	VBUS	PinB9	VBUS	VBUS
PinA5	CC1	CC1			
PinA6	DP1	DP1	PinB7		
PinA7	DN1	DN1	PinB6		
			PinB5	CC2	CC2
PinA9	VBUS	VBUS	PinB4	VBUS	VBUS
PinA12	GND	GND	PinB1	GND	GND



6	LATCH	STAINLESS	: Ni: 50u"
5	CONTACT	COPPER ALLOY	Contact area: 5u", Solder tails: Tin80u", Ni: 30~80u"
4	molding 2	L.C.P	(Black)
3	GNDSPRING	STAINLESS	
2	Molding	L.C.P	(Black)
1	SHELL	STAINLESS	Ni: 50u"

## 产品图

## 深圳市鑫风雷电子有限公司

公差一览表		单位		日期	
TOLERANCE UNLESS OTHERWISE		UNITS		DATE	
X	±0.30	X	±5'	1:1	2009/10/20
.XX	±0.25	.XX	±2'		
.XXX	±0.15	.XXX	±1'		
制图		审核		核准	
DRAWING		CHKD		APPD	
王冠		雷永健		雷永健	
产品料号		产品名称		角法	
PRODUCT PART NO		PRODUCT NAME		VIEW	
XFLY012-UCAM022-X		TYPE: 公头/母头/排针/排线/排线头/排线板/电流紫色		版本	
				A0	

- 备注**
1. 材料: See Table A
  2. 电镀要求: See Table A
  3. 机械特性:
    - 插入力: 5-20N
    - 拔出力: 8-20N
    - 耐久次数: 10,000次
  4. 电气特性:
    - 接触阻抗: 40mOhms Max(Initial)
    - 50mOhms Max(after)
    - 绝缘阻抗: 100MOhms Min
    - 耐压: AC 100V/1分钟
    - 额定电流:
      - 5A for VBUS(For A4/A9, B4/B9)
      - 1.25A for Vconn and GNDX for A1/A12, B1/B5/B12)
      - 0.25A for all other contacts.
  5. 使用物料及制程符合RoHS&HF.