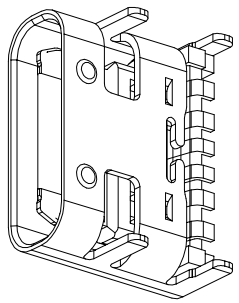
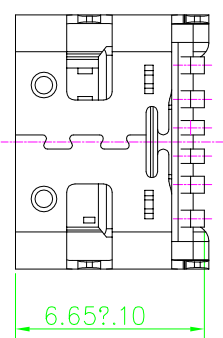
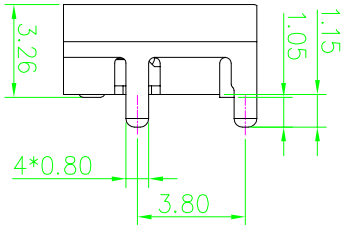
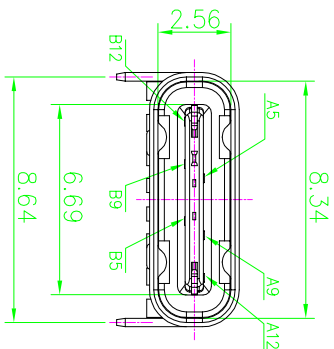
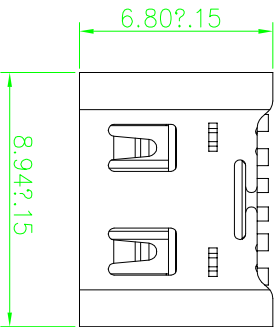
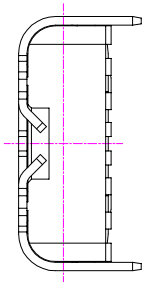
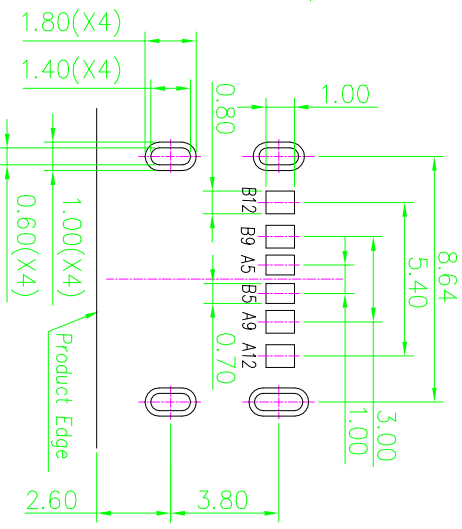


RoHS 客户图



A5	CC1	B5	CC2
A9	VBUS	B9	VBUS
A12	GND	B12	GND
PIN	SIGNAL NAME	PIN	SIGNAL NAME



RECOMMENDED P.C.B. LAYOUT
TOLERANCE UNSPECIFIED ±0.05mm

特性注解:

1. 电气特性:
额定电流: 3 A 最大
电源PIN及接地PIN: 1.25 A 每PIN
其它 PIN 0.25 A
2. 环境:
工作温度: -40°C~+85°C.
3. 机械特性:
插入力: 5~20Nf.
拔出力: 6~20Nf.
耐久寿命: 3000 Cycles.
4. 盐雾: 24H

目錄 MAPX A0	變更內容 MODIFICATION NEW	日期 DATE 09-10-20
------------------	-----------------------------	------------------------

产品图

公差一览表 TOLERANCE UNLESS OTHERWISE SPECIFIED		单位 UNITS MM	制图 DRAWING 王冠	产品料号 PRODUCT PART NO. 25014-UCAR001-B
X	±0.30	X	±5°	产品名称 PRODUCT NAME TYPE C 6P母座板上SMT有弹片
XX	±0.25	X	±2°	角法 ANGLE VIEW
XXX	±0.30	XX	±1°	版本 VERSION A0
XXX	±0.15	XXX	±0.5°	