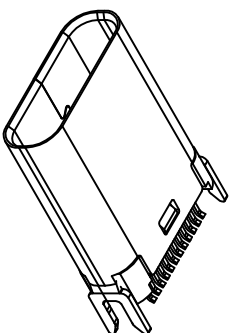
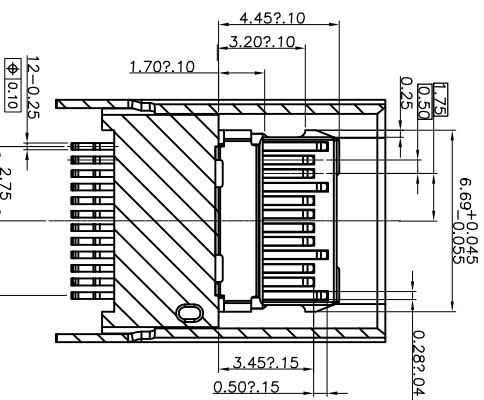
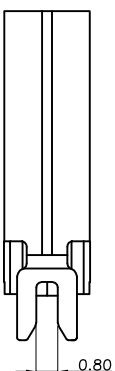
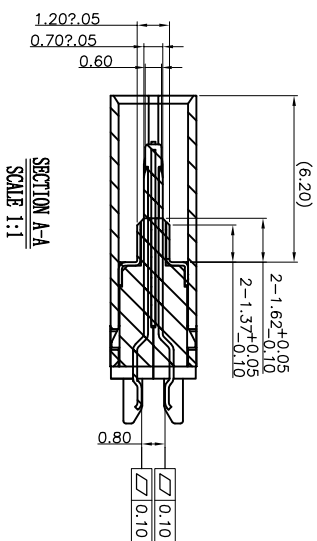
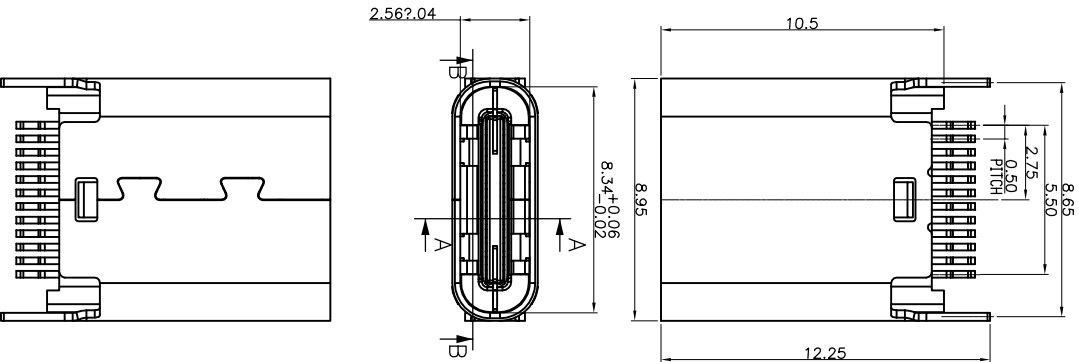


ROHS 客户图



- NOTES:
1. MATERIAL:
MOLDING: LCP UL94 V-0
CONTACT: COPPER ALLOY.
GOLD PLATING ALL OVER 50u" Min NICKEL AND 100u" Min Tin ALL OVER 50u" Min NICKEL ON SOLDER AREA
 2. MECHANICAL:
SHELL: SUS304-H, T=0.30±0.03mm
50u" NICKEL PLATING OVER ALL.
SHILD: SUS304-H, T=0.12±0.03mm
 3. ELECTRICAL:
INSERTION: 5~20N.
EXTRACTION: 8~20N.
DURABILITY: 10000 CYCLES
 4. ENVIRONMENTAL
TEMPERATURE RANGE -55°C ~ +85°C

产品图
PRODUCT CHART DWG

深圳市鑫风雷电子有限公司

| 公差一览表 TOLERANCE UNLESS OTHERWISE | | 单位 UNITS | MM | 制图 DRAWING | 王冠 | 产品料号 PRODUCT PART NO. | 00501-UCAF002-X |
|-------------------------------------|-------|-------------|-------|---------------|-----|--------------------------|----------------------|
| X | ±0.30 | X' | ±5' | 审核 CHKD | 雷永健 | 产品名称 PRODUCT NO. | TYPE C母座夹板0.8 L=10.5 |
| XX | ±0.25 | XX' | ±2' | 日期 DATE | 雷永健 | 角法 ANGLE VIEW | 版本 VER |
| XXX | ±0.30 | XXX' | ±1' | 比例 SCALE | 雷永健 | 版本 VER | A0 |
| XXX | ±0.15 | XXX' | ±0.5' | 日期 DATE | 雷永健 | 版本 VER | A0 |

| 目録 MAPX | 变更内容 MODIFICATION | 日期 DATE |
|------------|----------------------|------------|
| A0 | NEW | 09-10-20 |

1

2

3

4

5

6

7

8

9

10

RoHS 客户图

目錄
MAPX

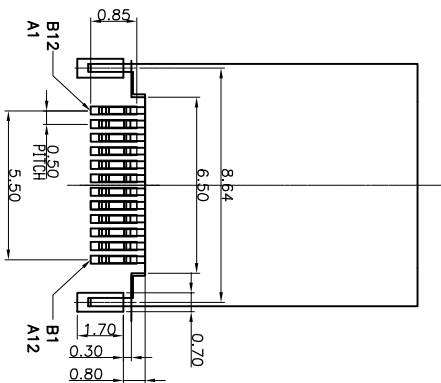
變更內容
MODIFICATION

日期
DATE

A0

NEW

09-10-20



RECOMMENDED P.C.B. LAYOUT (T:1.00mm)
TOLERANCE UNSPECIFIED ±0.05mm

| PIN | Signal Name | Description | PIN | Signal Name | Description |
|-----|-------------|---|-----|-------------|---|
| A1 | GND | Ground return | B12 | GND | Ground return |
| A2 | SSTKp1 | Positive half of first SuperSpeed TX differential pair | B11 | SSRkp1 | Positive half of first SuperSpeed RX differential pair |
| A3 | SSTKn1 | Negative half of first SuperSpeed TX differential pair | B10 | SSRkn1 | Negative half of first SuperSpeed RX differential pair |
| A4 | Vbus | Bus Power | B9 | Vbus | Bus Power |
| A5 | CC1 | Configuration Channel | B8 | SBu2 | Sidband Use (SBU) |
| A6 | Dp1 | Positive half of the USB 2.0 differential pair-Position 1 | B7 | Dn2 | Negative half of the USB 2.0 differential pair-Position 2 |
| A7 | Dn1 | Negative half of the USB 2.0 differential pair-Position 1 | B6 | Dp2 | Positive half of the USB 2.0 differential pair-Position 2 |
| A8 | SBu1 | Sidband Use (SBU) | B5 | CC2 | Configuration Channel |
| A9 | Vbus | Bus Power | B4 | Vbus | Bus Power |
| A10 | SSRKn2 | Negative half of second SuperSpeed RX differential pair | B3 | SSTKn2 | Negative half of second SuperSpeed TX differential pair |
| A11 | SSRkp2 | Positive half of second SuperSpeed RX differential pair | B2 | SSTKp2 | Positive half of second SuperSpeed TX differential pair |
| A12 | GND | Ground return | B1 | GND | Ground return |

产品图

深圳市鑫风雷电子有限公司

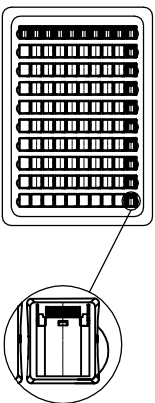
| 公差一览表 TOLERANCE UNLESS OTHERWISE SPECIFIED | | 单位 UNITS | 制图 DRAWING | 产品料号 PRODUCT PART NO. |
|---|-------|-------------|---------------|--------------------------|
| X | ±0.30 | X' | ±5' | 00501-UCAP002-X |
| X | ±0.25 | X' | ±2' | |
| .XX | ±0.30 | .XX' | ±1' | |
| .XXX | ±0.15 | .XXX' | ±0.5' | |

| 比例 SCALE | 日期 DATE | 审核 CHKD | 核准 APPD | 版本 VER |
|-------------|------------|------------|------------|-----------|
| 1:1 | 2009/10/20 | 雷永健 | 雷永健 | A0 |

RoHS 客户图

| | | |
|------------------|-----------------------------|------------------------|
| 目錄 MAPX A0 | 變更內容 MODIFICATION NEW | 日期 DATE 09-10-20 |
|------------------|-----------------------------|------------------------|

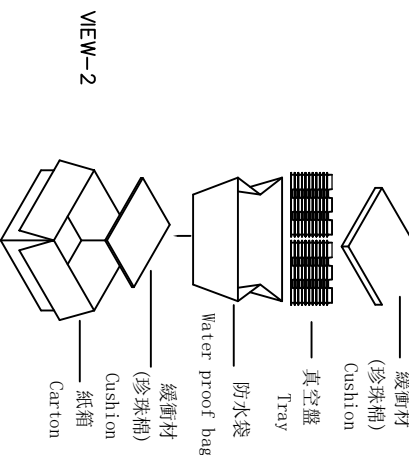
1. 將成品依同一方向放入真空盤內, 如圖所示。
At same direction, put product onto the tray.
Direction refers to below drawing.



2. 每1個紙箱可放置之包裝盤(包括上蓋)見下表。
1) trays per carton, please see next table.

3) 將裝滿成品的真空盤用 PE 帶捆緊後放在塑膠袋內 (10 盤一捆), 裝完後再封箱。

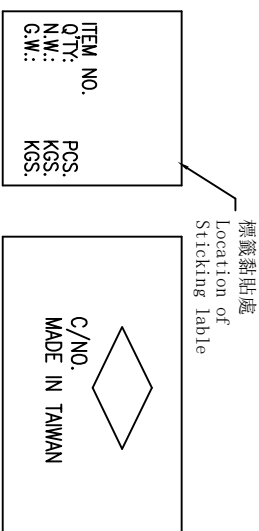
2) The Qty of products per carton please see next table.
3) Bind the trays with PE tape and then (a bundle of 10 trays), put them into the poly bag. Seal the carton with tape.



(The detail of the packing)

| 包裝明細表 | (Packing Capacity) | | 重量 (Kg) | | | |
|-----------------------|--------------------|--------------|---------|----------|----------|----------|
| 產品料號 (Product No.) | 包裝容量 pcs/box | boxes/Carton | Pcs/Box | N.W./Pcs | N.W./Box | G.W./Box |
| | 100 | 70 | 7000 | | | |

1). 將標籤貼於紙箱側上方。
Stick the needful label On the up-right corner of the side of carton.



VIEW-3

- 備註(REMARK)
- 若有未裝滿之零數箱, 必須以緩衝材塞滿。
The unfilling-carton must be filled with assuagement.
 - 防水袋需用膠帶貼實且封口。
waterproof plastic bag must be folded up.
 - 裝滿成品后之外箱, 最大堆積箱數: 5 箱
About the box fully filled with products, the MAX accumulating quantity of boxes is 5.
 - 如須貼Bar-code, 請依Bar-code 作業辦法執行
If barcode lable is required, do it according to the related barcode lable operation standards.

產品圖

深圳市鑫风雷电子有限公司

| 公差一览表 TOLERANCE UNLESS OTHERWISE | | 單位 UNITS | 比例 SCALE | 日期 DATE | 制圖 DRAWING | 審核 CHKO | 核准 APPD | 產品料號 PRODUCT PART NO. | 產品名稱 PRODUCT NO. | 角法 VIEW | 版本 VER |
|-------------------------------------|-------|-------------|-------------|------------|---------------|------------|------------|--------------------------|----------------------|------------|-----------|
| X | ±0.30 | X' | ±5' | | 王冠 | 雷永健 | 雷永健 | 00501-UCAR002-X | TYPE C母座夾板0.8 L=10.5 | | A0 |
| .XX | ±0.25 | .X' | ±2' | | | | | | | | |
| .XXX | ±0.15 | .XX' | ±1' | 2009/10/20 | | | | | | | |