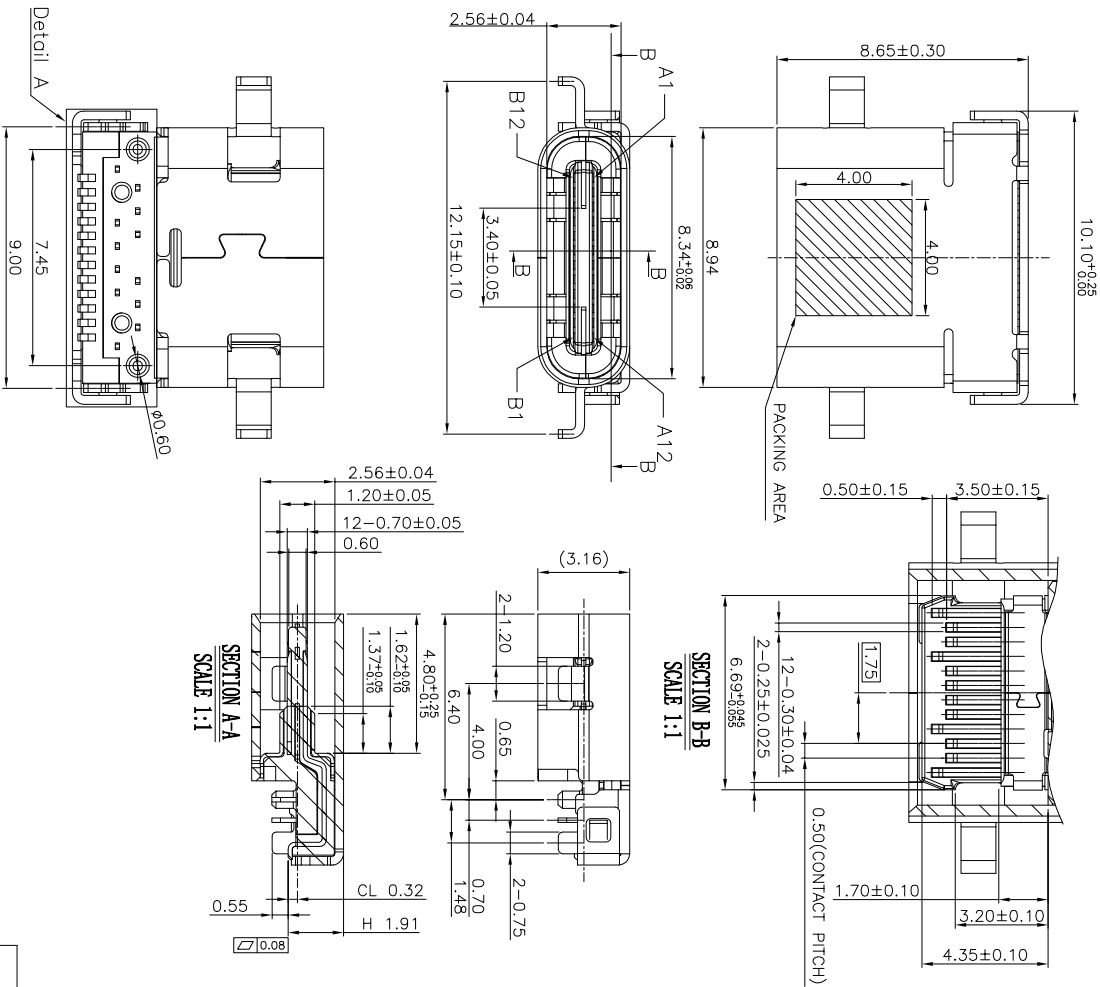
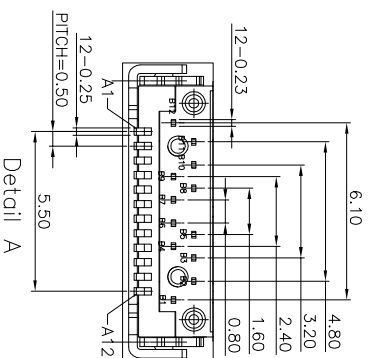


ROHS 客户图



NOTES: 1. MATERIAL:

- MOLDING: LCP UL94 V-0
 - CONTACT: COPPER ALLOY.
 - GOLD PLATED Min ON CONTACT AREA, 100u”
 - Min TIN (LEAD FREE) ON SOLDER AREA,
 - SHELL: SUS304-H,T=0.30±0.03mm
 - 50u” NICKEL PLATING OVER ALL.
 - SHLD: SUS304-H,T=0.12±0.03mm
2. MECHANICAL:
- INSERTION: 5~20N.
 - EXTRACTION: 8~20N.
 - DURABILITY: 10000 CYCLES
3. ELECTRICAL:
- CURRENT: 5A MIN FOR VBUS;
 - 0.25A MIN FOR OTHER.
 - VOLTAGE: 20 V MAX
 - WITHSTANDING VOLTAGE: 100V AC.
 - CONTACT RESISTANCE: 40mΩ MAX.
 - INSULATION RESISTANCE: 100MΩ MIN.
4. ENVIRONMENTAL
- TEMPERATURE RANGE -55°C ~ +85°C



深圳市鑫风雷电子有限公司

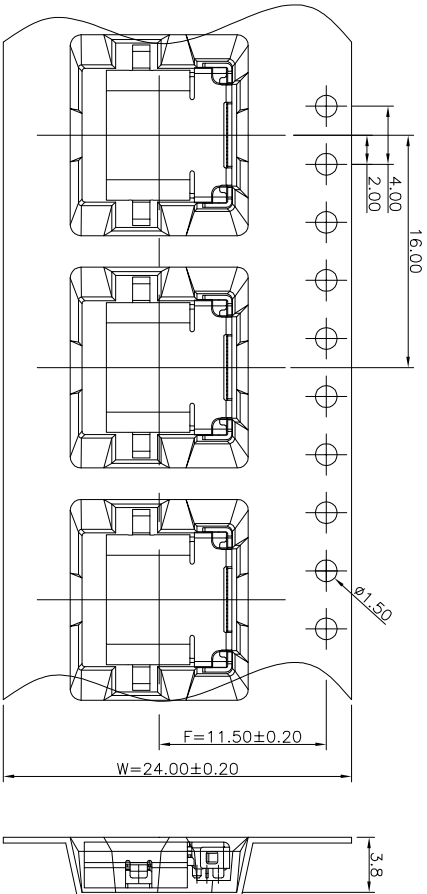
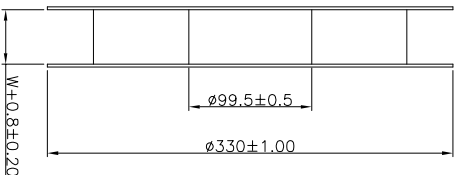
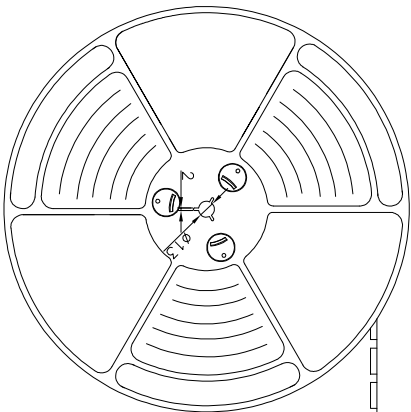
公差一览表		单位		比例		日期		制图		产品料号	
TOLERANCE UNLESS OTHERWISE		UNITS		SCALE		DATE		DRAWING		PRODUCT PART NO.	
X	±0.30	X'	±5°	X	1:1	2009/10/20	王冠	王冠	00501-UCAF007-X		
XX	±0.25	X''	±2°	XX			雷永健	雷永健			
XXX	±0.15	XXX'	±0.5°	XXX			雷永健	雷永健			

PRODUCT CHART DWG

RoHS 客户图

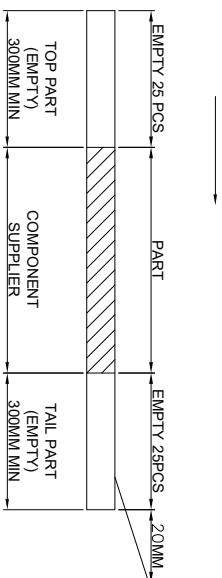
出料方向

PULL OUT DIRECTION



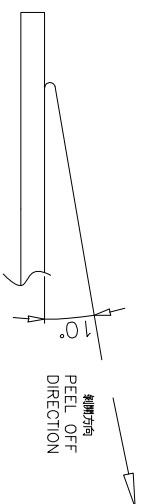
NOTES

1. 帶子引導長度
LEAD TAPE LENGTH
出料方向
PULL OUT DIRECTION



2. 上帶 剝力力為: 0.1~1.3N(10.2gf~130gf)
PEELING OFF FORCE OF TOP TAPE: 0.1~1.3N(10.2gf~130gf)

出貨運輸過程中一定注意:
THIS REQUIREMENT SHOULD BE APPLIED AT SHIPMENT;
卷帶在運輸過程中不能散開
PEELING OFF SHOULD NOT BE ALLOWED DURING TRANSPORTATION



产品图

PRODUCT CHART DWG

深圳市鑫风雷电子有限公司

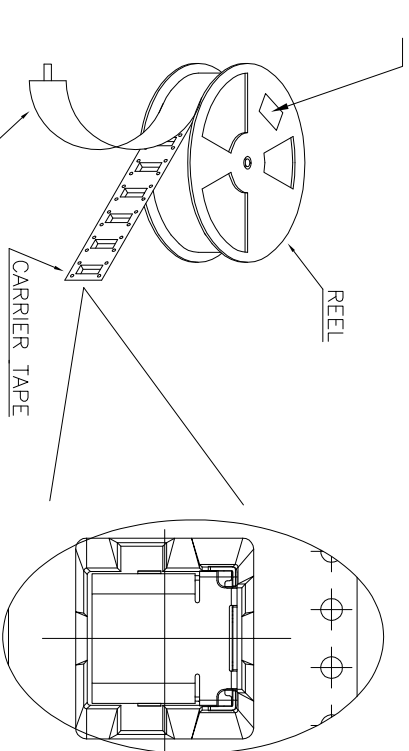
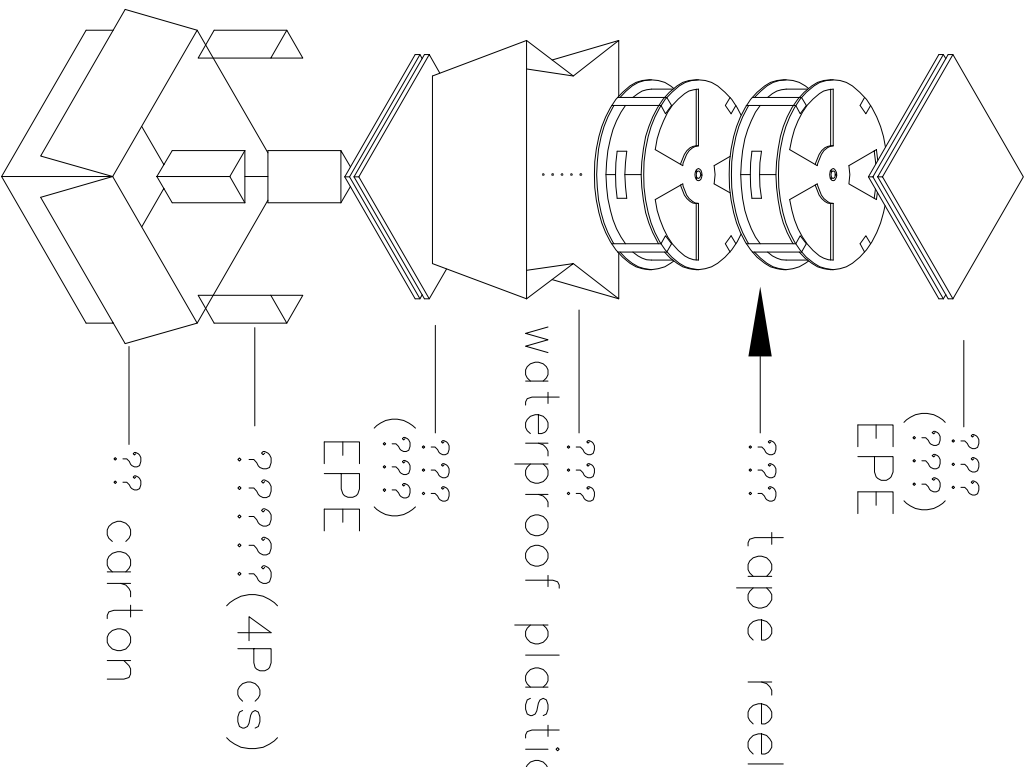
公差一览表 TOLERANCE UNLESS OTHERWISE		单位 UNITS	MM	制图 DRAWING	王冠 WANG GUAN	产品料号 PRODUCT PART NO.	00501-UCAR007-X
X	±0.30	X'	±5°	审核 CHECK	雷永健 LEI YONGJIAN	产品名称 PRODUCT NO.	TYPE C母座双数据插后脚DP-SMT 24P 1-8:65
XX	±0.25	X''	±2°	核准 APPROVE	雷永健 LEI YONGJIAN	角法 VIEW	
XXX	±0.15	XXX'	±0.5°	日期 DATE		版本 VER	A0
				比例 SCALE			
				日期 DATE	2009/10/20		

RoHS 客户图

目錄 MAPX A0	變更內容 MODIFICATION NEW	日期 DATE 09-10-20
------------------	-----------------------------	------------------------

at small positioning hole of the carrier tape side).
 ??? (????????????????)

Location of label sticking (label



NOTE:

1. 每捲包裝數量及每箱裝箱數量如左下表格
Packing qty of each reel & carton as below table shown.
2. 以上膠帶覆蓋下包裝帶經包裝機熱熔包裝
Use cover tape to cover and hot melt machine to seal up.
3. 每個紙箱放2個珍珠棉
Every carton use 2pcs EPE.
4. 將裝滿產品的卷盤放入紙箱並以膠帶封口
Put reels in the carton and use adhesive tape to seal up.

產品圖

深圳市鑫风雷电子有限公司

公差一览表 TOLERANCE UNLESS OTHERWISE SPECIFIED		單位 UNITS	比例 SCALE	日期 DATE	制圖 DRAWING	審核 CHECK	核准 APPRO	產品料號 PRODUCT PART NO.	產品名稱 PRODUCT NO.	角法 VIEW	版本 VER
X	±0.30	X'	±5'	2009/10/20	王冠	雷永健	雷永健	00501-UCAF007-X	TYPE C每捲裝載數量(個)P-SMT 24P L-8-65	⊕	A0
X	±0.25	X'	±2'								
XX	±0.30	XX'	±1'								
.XXX	±0.15	XXX'	±0.5'								

產品料號 (PRODUCT No.)	包裝容 量 (PACKING CAPACITY)	重量 WEIGHT (Kg)
PGS/REEL	REELS/CARTON	N.W./PGS
1000	8	N.W./BOX
	PGS/CARTON	G.W./BOX
	8000	

XFL 01-UCAF007-X