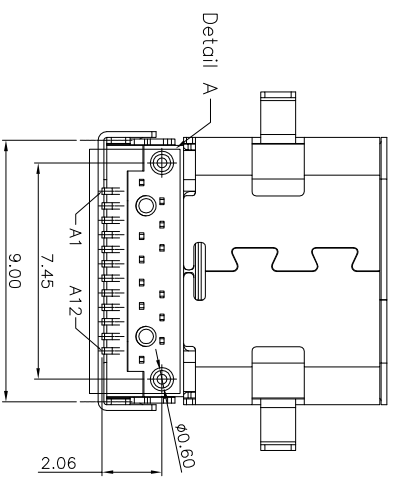
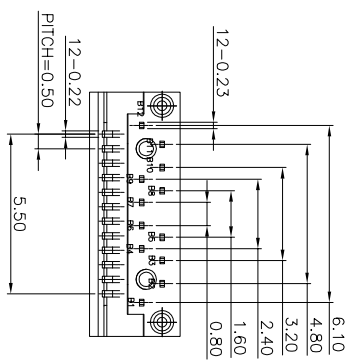
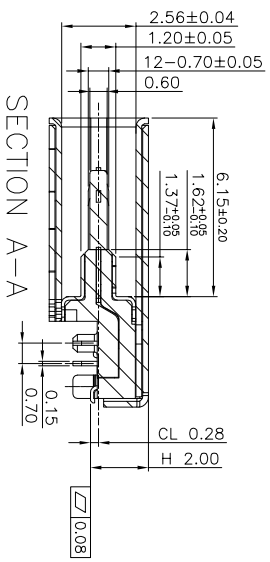
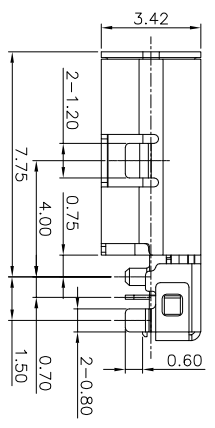
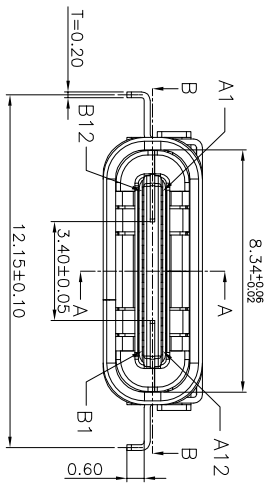
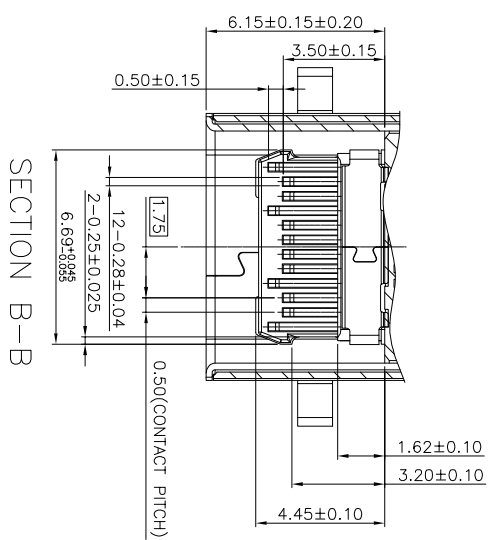
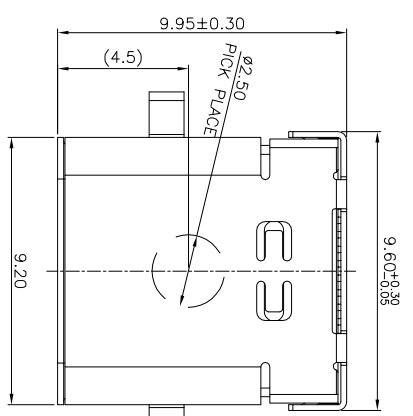


ROHS 客户图



NOTES: 1. MATERIAL:

MOLDING: LCP UL94 V-0
CONTACT: COPPER ALLOY.

GOLD PLATED Min ON CONTACT AREA, 100u”

Min TIN (LEAD FREE) ON SOLDER AREA,
50u” NICKEL PLATING OVER ALL.

SHELL: SUS304-H, T=0.30±0.03mm
SHLD: SUS304-H, T=0.12±0.03mm

2. MECHANICAL:

INSERTION: 5~20N.

EXTRACTION: 8~20N.

DURABILITY: 10000 CYCLES

3. ELECTRICAL:

CURRENT: 5A MIN FOR VBUS;
0.25A MIN FOR OTHER.

VOLTAGE: 20 V MAX

WITHSTANDING VOLTAGE: 100V AC.

CONTACT RESISTANCE: 40mΩ MAX.

INSULATION RESISTANCE: 100MΩ MIN.

4. ENVIRONMENTAL

TEMPERATURE RANGE -55°C ~ +85°C

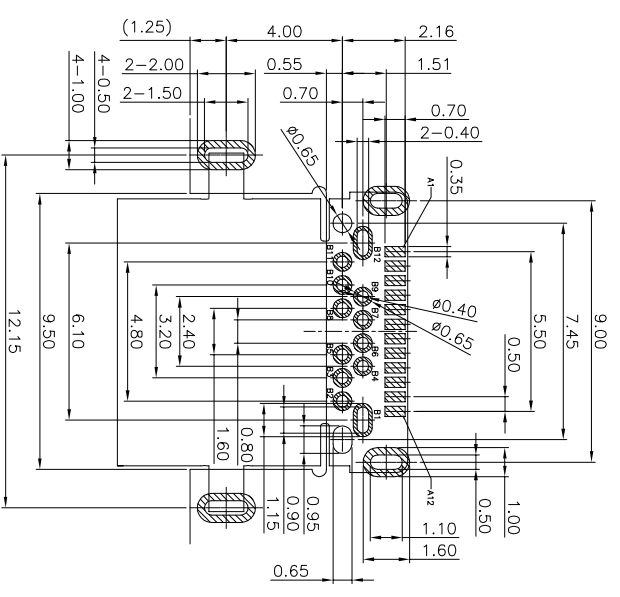
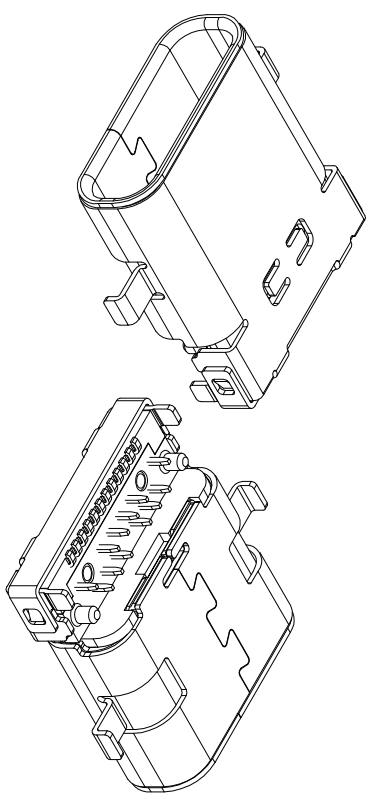
产品图

PRODUCT CHART DWG

深圳市鑫风雷电子有限公司

公差一览表		单位		MM		制图		产品料号	
TOLERANCE UNLESS OTHERWISE		UNITS		DRAWING		DRAFTER		PRODUCT PART NO.	
X	±0.30	X'	±5°	王冠	00501-UCAF012-X				
X	±0.25	X'	±2°	雷永健					
XX	±0.30	XX'	±1°	雷永健					
XXX	±0.15	XXX'	±0.5°	雷永健					
比例		SCALE		日期		核准		角法	
1:1		1:1		2009/10/20		APPD		VIEWS	
								版本	
								A0	

ROHS 客户图



RECOMMEND P.C.B LAYOUT(COMPONENT SIDE)
TOLERANCE FOR PCB LAYOUT IS ± 0.05
KEEP OUT ARE

USB TYPE-C FULL-FEATURED RECEPTACLE INTERFACE PIN ASSIGNMENTS

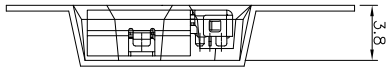
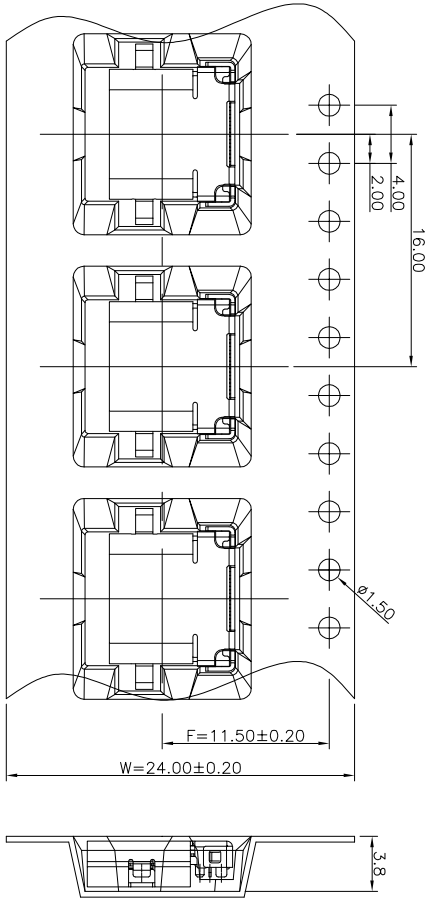
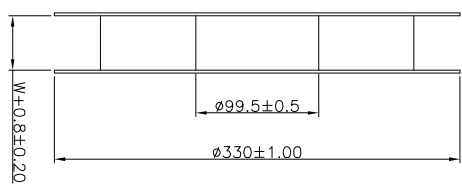
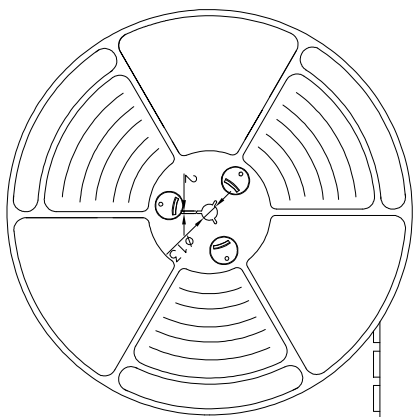
PIN	Signal Name	Description	PIN	Signal Name	Description
A1	GND	Ground return	B12	GND	Ground return
A2	SSTXp1	Positive half of first SuperSpeed TX differential pair	B11	SSRXp1	Positive half of first SuperSpeed RX differential pair
A3	SSTRx1	Negative half of first SuperSpeed TX differential pair	B10	SSRXn1	Negative half of first SuperSpeed RX differential pair
A4	Vbus	Bus Power	B9	Vbus	Bus Power
A5	CC1	Configuration Channel	B8	SBU2	Sideband Use (SBU)
A6	Dp1	Positive half of the USB 2.0 differential pair-Position 1	B7	Dn2	Negative half of the USB 2.0 differential pair-Position 2
A7	Dn1	Negative half of the USB 2.0 differential pair-Position 1	B6	Dp2	Positive half of the USB 2.0 differential pair-Position 2
A8	SR01	Sideband Use (SR0)	B5	CC2	Configuration Channel
A9	Vbus	Bus Power	B4	Vbus	Bus Power
A10	SSRXn2	Negative half of second SuperSpeed RX differential pair	B3	SSTXn2	Negative half of second SuperSpeed TX differential pair
A11	SSRXp2	Positive half of second SuperSpeed RX differential pair	B2	SSTXp2	Positive half of second SuperSpeed TX differential pair
A12	GND	Ground return	B1	GND	Ground return

产品图

公差一览表

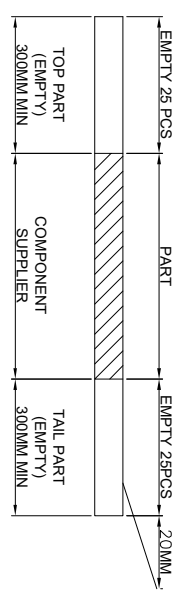
TOLERANCE UNLESS OTHERWISE SPECIFIED	公差一览表	单位 UNITS	MM	制图 DRAWING	王冠	产品料号 PRODUCT PART NO.
X	±0.30	X'	±5°	审核 CHKD	雷永健	00501-UCAF012-X
X	±0.25	X'	±2°	核准 APPD	雷永健	TYPE C母座沉板双壳前插后插DIP-SMT 24P L=10.0
XX	±0.30	XX'	±1°	日期 DATE	2009/10/20	角法 VIEW
XXX	±0.15	XXX'	±0.5°	版本 VER	A0	

ROHS 客户图

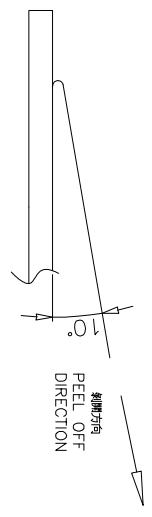


NOTES

1. 帶子引導長度
LEAD TAPE LENGTH
出料方向
PULL OUT DIRECTION



2. 上帶 剝力力為: 0.1~1.3N(10.2gf~130gf)
PEELING OFF FORCE OF TOP TAPE: 0.1~1.3N(10.2gf~130gf)
出貨運輸過程中一定注意:
THIS REQUIREMENT SHOULD BE APPLIED AT SHIPMENT:
卷帶在運輸過程中不能散開
PEELING OFF SHOULD NOT BE ALLOWED DURING TRANSPORTATION



產品圖

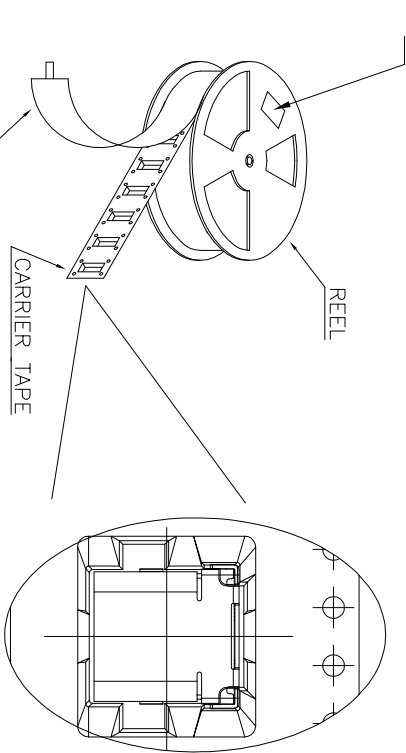
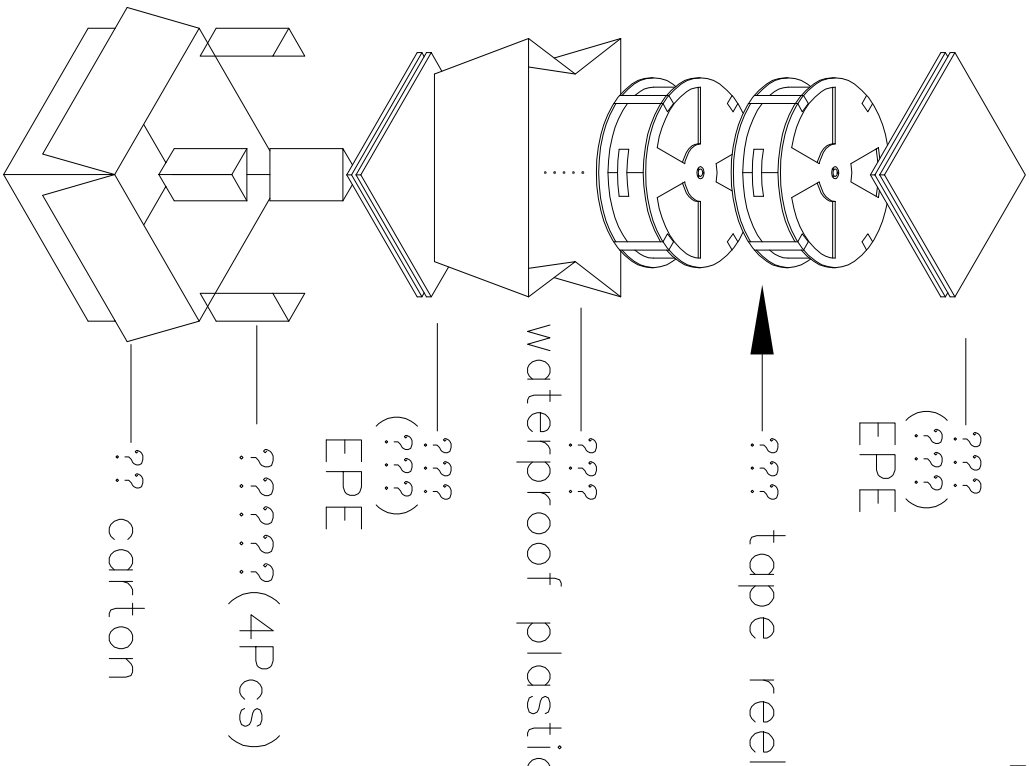
深圳市鑫风雷电子有限公司

公差一览表		單位	MM	制圖	王冠	產品料號	00501-UCAF012-X
TOLERANCE UNLESS OTHERWISE		UNITS		DRAWING		PRODUCT PART NO.	
X	±0.30	X'	±5°	審核	雷永健	產品名稱	TYPE C母座液態雙亮面插后插01D+SMT 2HP L=1.0.0
X	±0.25	X'	±2'	核准	雷永健	角法	
XX	±0.30	XX'	±1'	核準	雷永健	版本	版本
XXX	±0.15	XXX'	±0.5'	DATE		角法	角法
				DATE	2009/10/20	角法	角法

RoHS 客户图

目錄 MAPX A0	變更內容 MODIFICATION NEW	日期 DATE 09-10-20
------------------	-----------------------------	------------------------

at small positioning hole of the carrier tape side).
 ??? (?????????????)
 Location of label sticking (label



NOTE:

1. 每捲包裝數量及每箱裝箱數量如左下表格
Packing qty of each reel & carton as below table shown.
2. 以上膠帶覆蓋下包裝帶經包裝機熱熔包裝
Use cover tape to cover and hot melt machine to seal up.
3. 每個紙箱放2個珍珠棉
Every carton use 2pcs EPE.
4. 將裝滿產品的卷盤放入紙箱並以膠帶封口
Put reels in the carton and use adhesive tape to seal up.

產品圖

深圳市鑫風雷電子有限公司

公差一覽表
TOLERANCE UNLESS OTHERWISE

單位 UNITS	MM	英寸 INCH	比例 SCALE	日期 DATE	核准 APPR	製圖 DRAWING	審核 CHCK	產品料號 PRODUCT PART NO.	產品名稱 PRODUCT NO.	角法 VIEW	版本 VER
X	±0.30	X'	±5°	2009/10/20	雷永健	王冠	雷永健	00501-UCAF012-X	TYPE C每捲裝載24卷的插頁載011-SMT 24P L=10.0	⊕	A0
X	±0.25	X'	±2°								
XX	±0.30	XX'	±1°								
.XXX	±0.15	.XXX'	±0.5°								

產品料號 (PRODUCT No.)	包裝容 量 PCS/REEL	(PACKING CAPACITY) REELS/CARTON	重量 N.W./PCS	重量 N.W./BOX	重量 G.W./BOX
XFL 001-UCAF012-X	1000	8	8000		