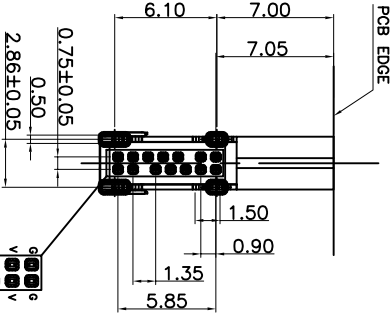
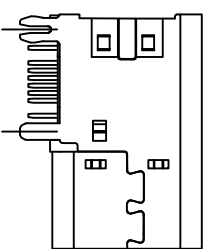
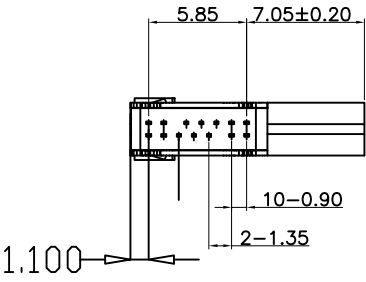
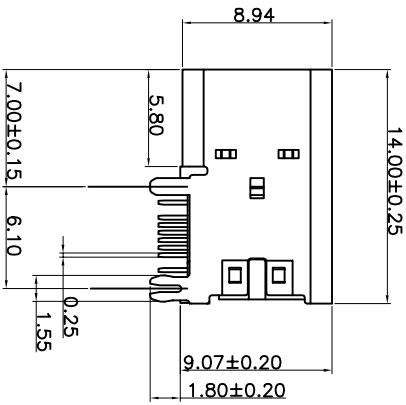
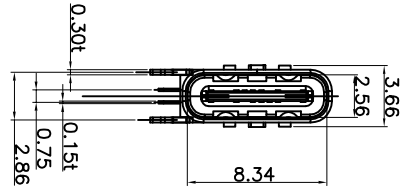
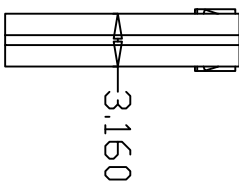


ROHS

客户图

|                  |                             |                        |
|------------------|-----------------------------|------------------------|
| 目錄<br>MAPX<br>A0 | 變更內容<br>MODIFICATION<br>NEW | 日期<br>DATE<br>09-10-20 |
|------------------|-----------------------------|------------------------|



| NO. | DESCRIPTION     | MATERIAL        | COLOR | REMARK      |
|-----|-----------------|-----------------|-------|-------------|
| 1   | SHELL           | STAINLESS STEEL | —     | Ni Plated   |
| 2   | TYPE C TERMINAL | COPPER ALLOY    | —     | Gold Plated |
| 3   | CENTER PIECE    | STAINLESS STEEL | —     | N0 Plated   |
| 4   | TYPE C HD       | HIGH TEMP       | BLACK | UL 94V-0    |
| 5   |                 |                 |       |             |
| 6   |                 |                 |       |             |
| 7   |                 |                 |       |             |

PCB板厚建议1.0~1.2MM

- SPECIFICATIONS:
- MECHANICAL :
    - INSERTION FORCE : 5N~20N
    - WITHDRAWAL FORCE : 8N~20N  
AFTER 10,000 CYCLES MATING: 2N MIN.
  - ELECTRICAL :
    - CONTACT CURRENT RATING: 3A .
    - VOLTAGE RATING : 30V AC (rms)
    - WITHSTANDING VOLTAGE: 100 VAC FOR 1 MINUTE.  
INSULATION RESISTANCE: 100 MEGAOHMS MIN.
    - CONTACT RESISTANCE: 40 MILLIOHMS MAX.
  - ENVIRONMENTAL :
    - OPERATING TEMPERATURE: -25° C TO +85° C

RECOMMENDED P.C.B. LAYOUT TOLERANCE UNSPECIFIED ±0.05mm

产品图

深圳市鑫风雷电子有限公司

|                                     |       |             |       |               |            |                          |                    |
|-------------------------------------|-------|-------------|-------|---------------|------------|--------------------------|--------------------|
| 公差一览表<br>TOLERANCE UNLESS OTHERWISE |       | 单位<br>UNITS | MM    | 制图<br>DRAWING | 王冠         | 产品料号<br>PRODUCT PART NO. | 01008-UCAP001-X    |
| X                                   | ±0.30 | X'          | ±5'   | 审核<br>CHKD    | 雷永健        | 产品名称<br>PRODUCT NO.      | TYPE C母座侧插14P针长1.3 |
| .XX                                 | ±0.25 | .XX'        | ±2'   | 核准<br>APPD    | 雷永健        | 角法<br>VIEW               | 版本<br>VER          |
| .XXX                                | ±0.30 | .XXX'       | ±1'   |               |            |                          | A0                 |
|                                     | ±0.15 | .XXX'       | ±0.5' | 日期<br>DATE    | 2009/10/20 |                          |                    |