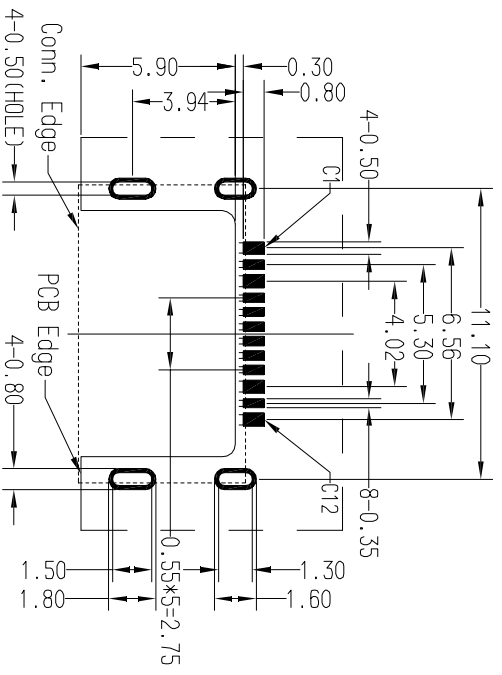
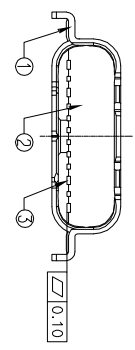
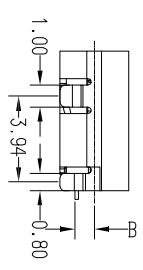
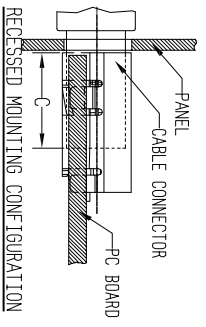
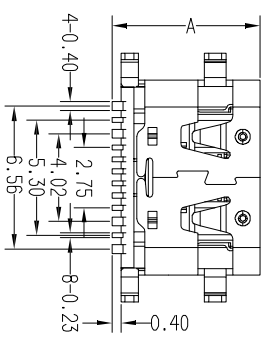
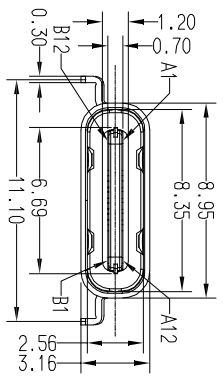
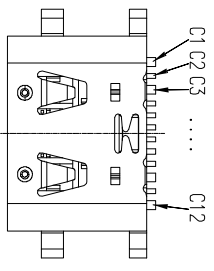


# RoHS 客户图

MAPX	MODIFICATION	DATE
A0	NEW	09-10-20



RECOMMENDED P.C.B LAYOUT (COMPONENT SIDE)  
 PCB THICKNESS: 0.80±0.05mm  
 DEFAULT TOLERANCE: ±0.05mm

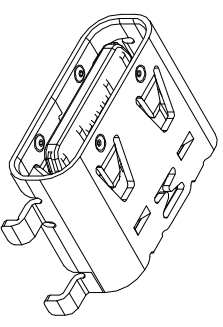
Dim A	Dim B	Dim C
6.50	0.88	4.40
6.80	0.88	4.70
8.30	0.88	6.20
6.50	0.48	4.40
6.80	0.48	4.70
8.30	0.48	6.20

### INTERFACE (FRONT VIEW)

A1	A2	A3	A4	A5	A6	A7	A8	A9	A10	A11	A12
GND	/	/	Vbus	CC1	D+	D-	SBU1	Vbus	/	/	GND
GND	/	/	Vbus	SBU2	D-	D+	CC2	Vbus	/	/	GND
B12	B11	B10	B9	B8	B7	B6	B5	B4	B3	B2	B1

### PIN ASSIGNMENT:

Pin No.	A1&B12	A5	A4&B9	A6	B8	B7	B6	B5	A7	A9&B4	A8	A12&B1
Signal Name	GND	CC1	Vbus	D+	SBU2	D-	D+	CC2	D-	Vbus	SBU1	GND
PCB PAD No.	C1	C2	C3	C4	C5	C6	C7	C8	C9	C10	C11	C12



- NOTES:
- ELECTRICAL CHARACTERISTICS:
    - CONTACT CURRENT RATING: 5.0A FOR VBUS PIN AND GND PIN, 0.25A MIN FOR ALL OTHER TERMINALS.
    - CONTACT RESISTANCE: 30MILLIOMH MAX FOR VBUS AND GND CONTACTS, 50MILLIOMH MAX FOR ALL OTHER CONTACTS.
    - DI-ELECTRIC WITHSTANDING VOLTAGE: 100 VAKS AC MIN.
    - INSULATION RESISTANCE: 100 MEGOHMS MIN.
  - MECHANICAL CHARACTERISTICS:
    - CONNECTOR INSERTION FORCE: 5-20N, AT A MAXIMUM RATE OF 12.5MM PER SECOND.
    - CONNECTOR EXTRACTION FORCE: 8-20N, AT A MAXIMUM RATE OF 12.5MM PER SECOND.
    - DURABILITY: 10000 CYCLES.
    - OPERATING TEMPERATURE: -55° C TO +85° C.
    - RECOMMENDED PROCESS: IR REFLOW 280° C, 3-5SECONDS.
    - THE CONNECTOR IS RoHS COMPLIANT.

### 产品图

### 深圳市鑫风雷电子有限公司

NO.	DESCRIPTION	QTY	MATERIAL
③	CONTACT	12	COPPER ALLOY
②	PLASTIC	1	THERMOPLASTIC UL 94V-0
①	SHELL	1	STAINLESS STEEL

公差一览表	
TOLERANCE UNLESS OTHERWISE SPECIFIED	UNIT
X	±0.30
X	±0.25
XX	±0.30
XXX	±0.15

单位	MM
比例	1:1
日期	2009/10/20
制图	王冠
审核	雷永健
核准	雷永健
产品料号	11009-UCAF004-X
产品名称	TYPE C母座沉板12P
画法	
版本	A0