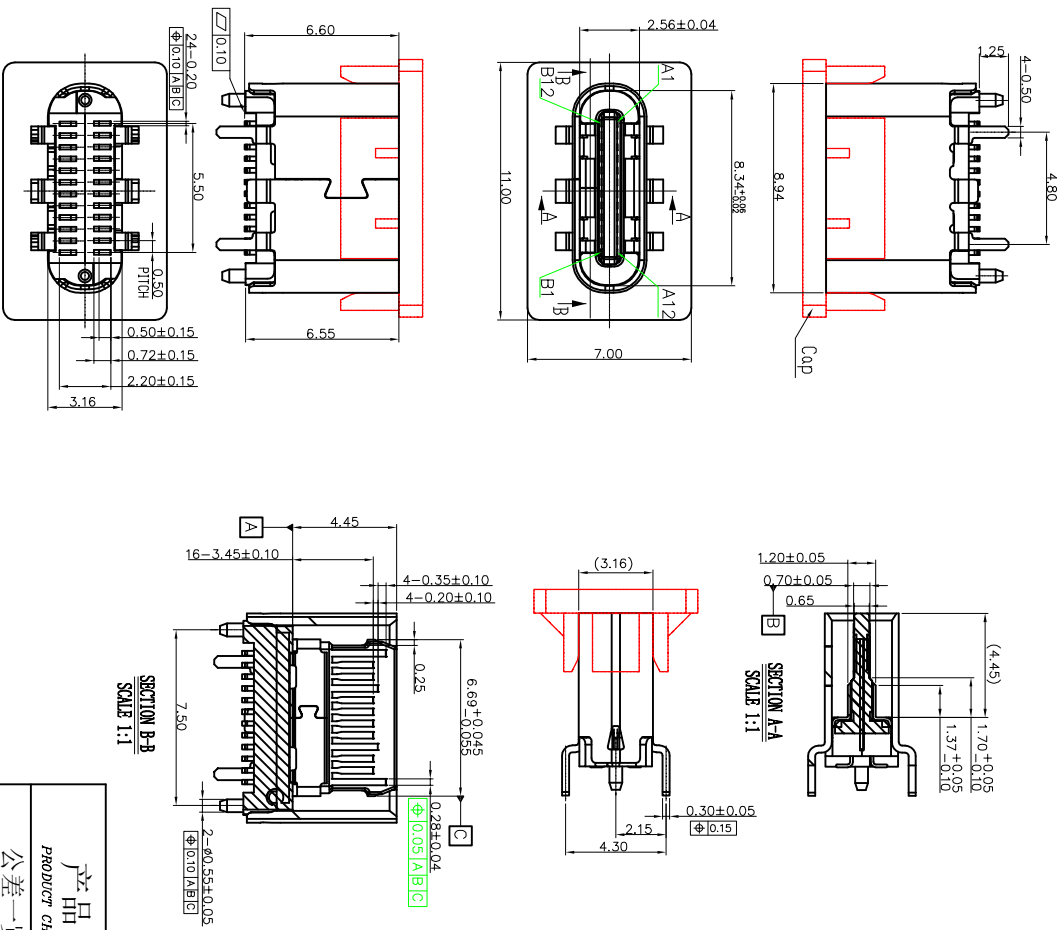


RoHS 客户图



NOTES:
 1. MATERIAL:
 MOLDING: LCP UL94 V-0
 CONTACT: COPPER ALLOY.
 GOLD PLATING ALL OVER 50u" Min NICKEL
 AND 100u"Min Tin ALL OVER 50u" Min NICKEL
 ON SOLDER AREA
 SHELL: SUS304-H,T=0.30±0.03mm
 50u" NICKEL PLATING OVER ALL.
 SHILD:SUS304-H,T=0.12±0.03mm

2. MECHANICAL:
 INSERTION: 5~20N.
 EXTRACTION: 8~20N AFTER TEST .
 DURABILITY: 10000 CYCLES

3. ELECTRICAL:
 CURRENT: 5A FOR VBUS;
 1.25A FOR GND PIN.
 0.25A FOR OTHER.
 VOLTAGE: 20 V MAX
 WITHSTANDING VOLTAGE: 100V AC R.M.S
 CONTACT RESISTANCE: 40mΩ MAX.
 INSULATION RESISTANCE: 100MΩ MIN.
 4. ENVIRONMENTAL
 TEMPERATURE RANGE -55°C ~ +85°C

SECTION B-B
SCALE 1:1

产品图
PRODUCT CHART DWG

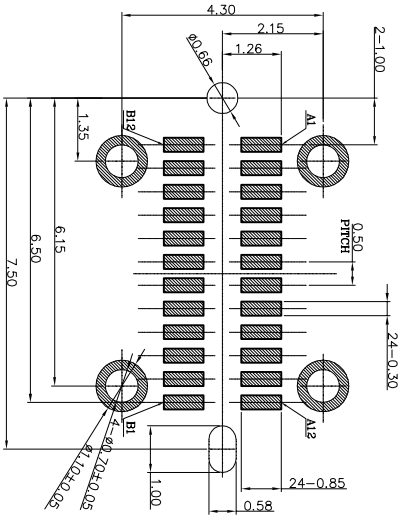
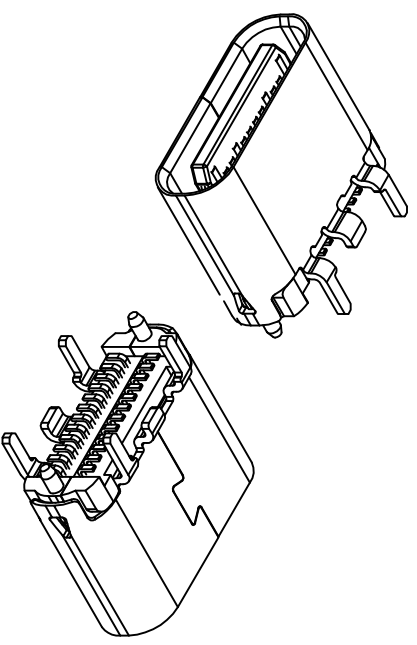
公差一览表 TOLERANCE UNLESS OTHERWISE		单位 UNITS		制图 DRAWING		产品料号 PRODUCT PART NO.	
X	±0.30	X'	±5°	王冠	11009-UCAF010-X	产品名称 PRODUCT NAME	TYPE C 24P母座180度SMT H=6.5
X	±0.25	X'	±2°	雷永健		角法 PRODUCT NO.	
.XX	±0.30	.XX'	±1°	雷永健		版本 VER	
.XXX	±0.15	.XXX'	±0.5°			日期 DATE	2009/10/20
						核准 Appd	
						雷永健	

深圳市鑫风雷电子有限公司

目錄 MAPX	修改內容 MODIFICATION	日期 DATE
40	NEW	09-10-20

THIS DRAWING CONTAINS INFORMATION THAT IS PROPRIETARY TO XIN FENG LEI ELECTRONIC CO.,LTD AND SHOULD NOT BE USED WITHOUT WRITTEN PERMISSION

ROHS 客户图



RECOMMENDED P.C.B. LAYOUT (T:1.00mm)
TOLERANCE UNSPECIFIED ±0.05mm
SCALE: 2:1

目錄 MAPX 40	變更內容 MODIFICATION NEW	日期 DATE 09-10-20
------------------	-----------------------------	------------------------

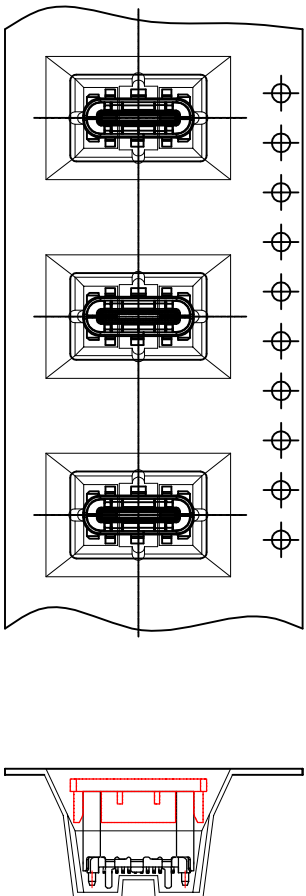
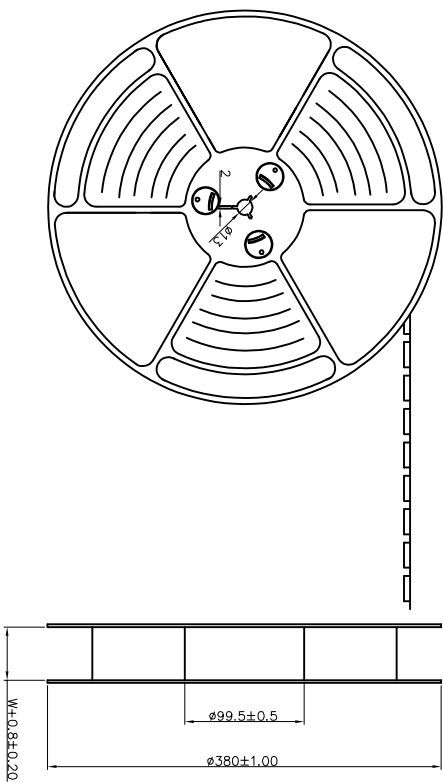
PIN	Signal Name	PIN	Signal Name
A1	GND	B12	GND
A2	SSTXp1	B11	SSRXp1
A3	SSTXn1	B10	SSRXn1
A4	VBUS	B9	VBUS
A5	CC1	B8	SBU2
A6	Dp1	B7	Dn2
A7	Dn1	B6	Dp2
A8	SBU1	B5	CC2
A9	VBUS	B4	VBUS
A10	SSRXn2	B3	SSTXn2
A11	SSRXp2	B2	SSTXp2
A12	GND	B1	GND

深圳市鑫风雷电子有限公司

产品图 PRODUCT CHART DWG		单位 UNITS		制图 DRAWING		产品料号 PRODUCT PART NO.	
公差一览表 TOLERANCE UNLESS OTHERWISE		MM	王冠	11009-UCAF010-X			
X	±0.30	X	±5°	审核 CHECK	雷永健	产品名称 PRODUCT NAME	TYPE C 24P母座180度SMT H=6.5
X	±0.25	X	±2°	核准 APPD	雷永健	角法 VIEW	
.XX	±0.30	.XX	±1°	日期 DATE	2009/10/20	版本 VER	40
.XXX	±0.15	.XXX	±0.5°				

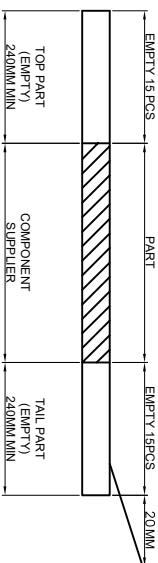
THIS DRAWING CONTAINS INFORMATION THAT IS PROPRIETARY TO XINFENGLI ELECTRONIC CO.,LTD.AND SHOULD NOT BE USED WITHOUT WRITTEN PERMISSION

ROHS 客户图



NOTES

1. 带子引导长度
LEAD TAPE LENGTH
出料方向
PULL OUT DIRECTEON



2. 出货运输过程中一定注意:
THIS REQUIREMENT SHOULD BE APPLIED AT SHIPMENT:
卷带在运输过程中不能散开
PEELING OFF SHOULD NOT BE ALLOWED DURING TRANSPORTATION

目錄 MAPX A0	變更內容 MODIFICATION NEW	日期 DATE 09-10-20
------------------	-----------------------------	------------------------

产品图

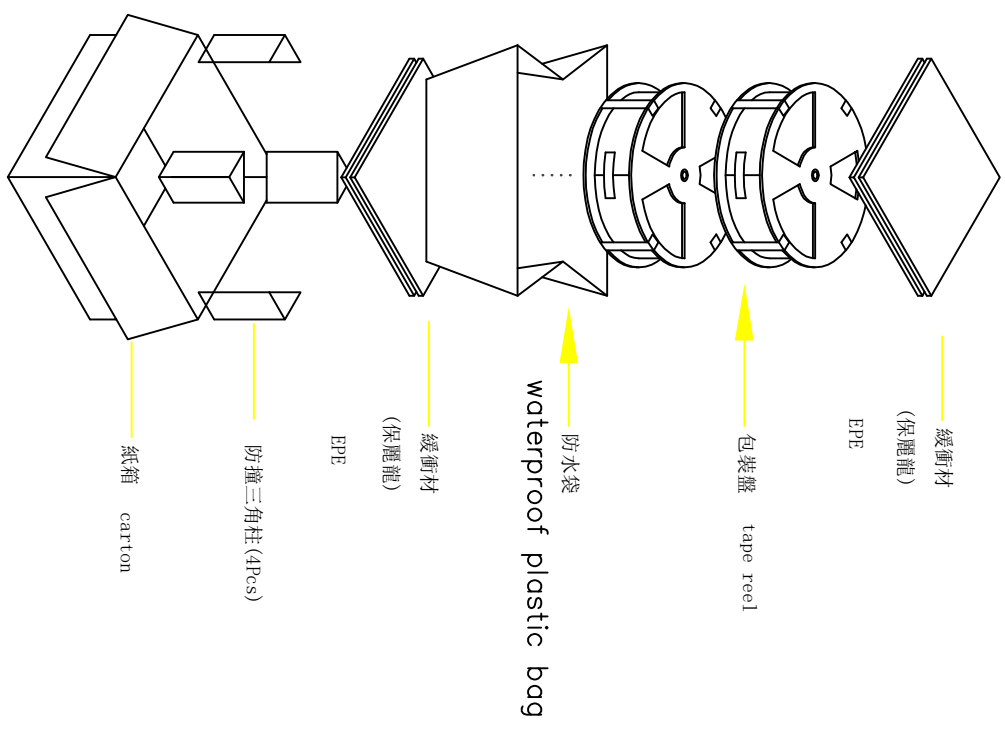
深圳市鑫风雷电子有限公司

公差一览表 TOLERANCE UNLESS OTHERWISE		单位 UNITS		制图 DRAWING		产品料号 PRODUCT PART NO.	
X	±0.30	X'	±5°	王冠	11009-UCAF010-X	TYPE C 24P母座(80度SMT)H=6.5	
X	±0.25	X'	±2°	雷永健			
.XX	±0.30	.XX'	±1°	雷永健			
.XXX	±0.15	.XXX'	±0.5°				

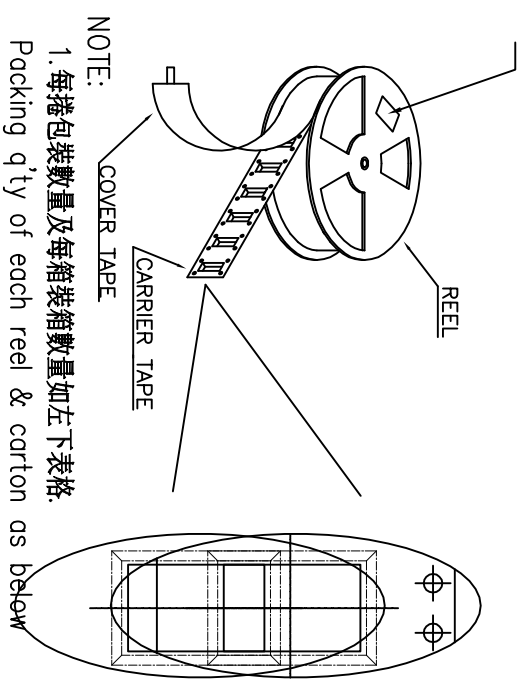
日期 DATE	2009/10/20	核准 Appd	雷永健	角法 VIEW	版本 VER	A0
------------	------------	------------	-----	------------	-----------	----

THIS DRAWING CONTAINS INFORMATION THAT IS PROPRIETARY TO XINFENGLI ELECTRONIC CO.,LTD.AND SHOULD NOT BE USED WITHOUT WRITTEN PERMISSION

RoHS 客户图



at small positioning hole of the carrier tape side).
 標籤黏貼處 (朝捲裝包材的小定位孔一側)
 Location of label sticking (label)



- NOTE:
1. 每捲包裝數量及每箱裝箱數量如左下表格。
Packing qty of each reel & carton as below table shown.
 2. 以上膠帶覆蓋下包裝帶經包裝機熱熔包裝
Use cover tape to cover and hot melt machine to seal up.
 3. 每個紙箱放2個珍珠棉
Every carton use 2pcs EPE.
 4. 將裝滿產品的卷盤放入紙箱並以膠帶封口
Put reels in the carton and use adhesive tape to seal up.

目錄 MAPX A0	變更內容 MODIFICATION NEW	日期 DATE 09-10-20
------------------	-----------------------------	------------------------

產品圖 PRODUCT CHART DWG		單位 UNITS		制圖 DRAWING		產品料號 PRODUCT PART NO.	
公差一覽表 TOLERANCE UNLESS OTHERWISE		MM		王冠		11009-UCAF010-X	
X	±0.30	X	±5°	雷永健	雷永健	TYPE C 24P母座	180度SMT H=6.5
X	±0.25	X	±2°	雷永健	雷永健		
.XX	±0.30	.XX	±1°	雷永健	雷永健		
.XXX	±0.15	.XXX	±0.5°	雷永健	雷永健		

CONNECTOR (PCS)	REEL	CARTON
	800	6400

深圳市鑫风雷电子有限公司

THIS DRAWING CONTAINS INFORMATION THAT IS PROPRIETARY TO XINFENGLEI ELECTRONIC CO.,LTD.AND SHOULD NOT BE USED WITHOUT WRITTEN PERMISSION