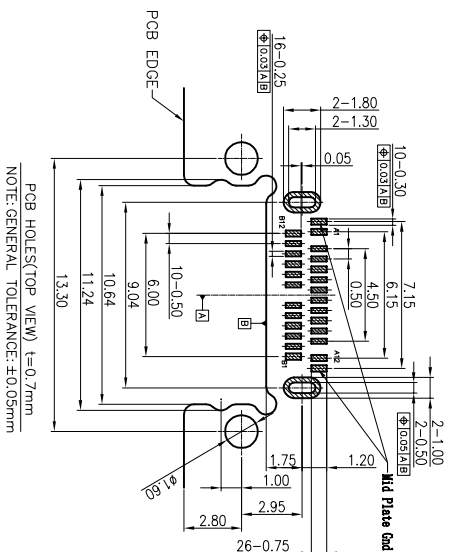
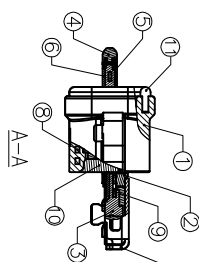
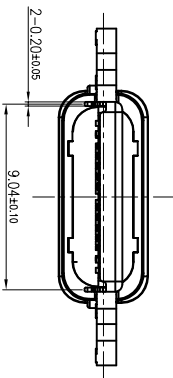
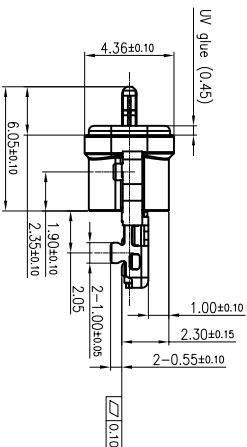
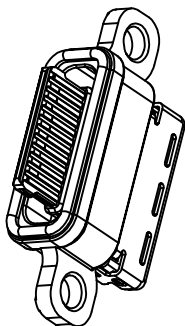
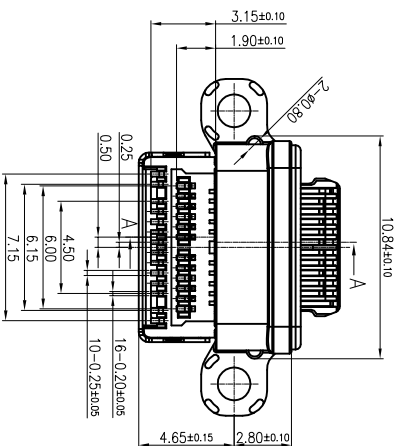
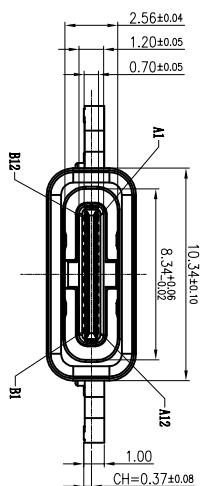
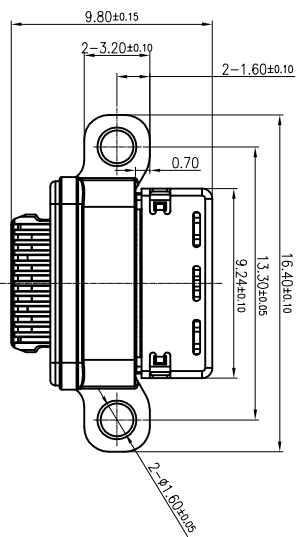


ROHS 客户图



PCB HOLE(TOP VIEW) $\pm 0.07mm$
NOTE: GENERAL TOLERANCE: $\pm 0.05mm$

- SPECIFICATION:
- ELECTRICAL CHARACTERISTICS:
 - CURRENT RATING: 3A
 - CONTACT RATED VOLTAGE: 30V AC
 - TEMPERATURE RANGE: $-40^{\circ}C \sim 85^{\circ}C$
 - CONTACT RESISTANCE: 40 MILLIONHM MAX.
 - DIELECTRIC WITHSTANDING VOLTAGE: 100 VAC r.m.s
 - INSULATION RESISTANCE: 100 MEGOHMS MIN.
 - MECHANICAL CHARACTERISTICS
 - INSERTION FORCE: 5~20N
 - EXTRACTION FORCE: Initial: 8~20N; Durability: 6~20N(10000cycles);
 - DURABILITY: 10,000CYCLES
 - IR REFLOW:
- THE PEAK TEMPERATURE ON THE BOARD SHALL BE MAINTAINED FOR 10 SECONDS AT 260°C.
3.2. Waterproof grade: IPX7.

11	GLUE	1pcs	EPOXY	BLACK COLOR
10	Waterproof ring	1pcs	UV Glue	N/A
9	GROUND PLATE	1pcs	STAINLESS STEEL T=0.15mm	SOLDER AREA: 50*50* NI (WELFAHNER 1)
8	IM SHELL	1pcs	STAINLESS STEEL T=0.20mm	WELFAHNER 1)
7	SUB SHELL	1pcs	STAINLESS STEEL T=0.20mm	All over 50U" Ni Min. (LAYER)
6	BOTTOM CONTACT	1set	COPPER ALLOY T=0.12mm	CONTACT AREA: SEE PRODUCT NO. (LAYER 8) SOLDER AREA: 1U" Au Min. (LAYER 2), All over 50U" Ni Min. (LAYER 1)
5	TOP CONTACT	1set	COPPER ALLOY T=0.12mm	
4	INSERT MOLD 38P	1pcs	HIGH TEMP. THERMOPLASTIC	UJ94V-0 / BLACK
3	INSERT MOLD 2NDP	1pcs	HIGH TEMP. THERMOPLASTIC	UJ94V-0 / BLACK
2	INSERT MOLD 1STP	1pcs	HIGH TEMP. THERMOPLASTIC	UJ94V-0 / BLACK
1	HSG IM SHELL	1pcs	HIGH TEMP. THERMOPLASTIC	UJ94V-0 / BLACK

产品图
PRODUCT CHART DWG

公差一览表
TOLERANCE UNLESS OTHERWISE SPECIFIED

公差	比例	日期	审核	核准	版本
X	1:1	2009/10/20	雷永健	雷永健	A0
XX					
XXX					

深圳市鑫风雷电子有限公司
Shenzhen xinfenglei Electronic Co., Ltd

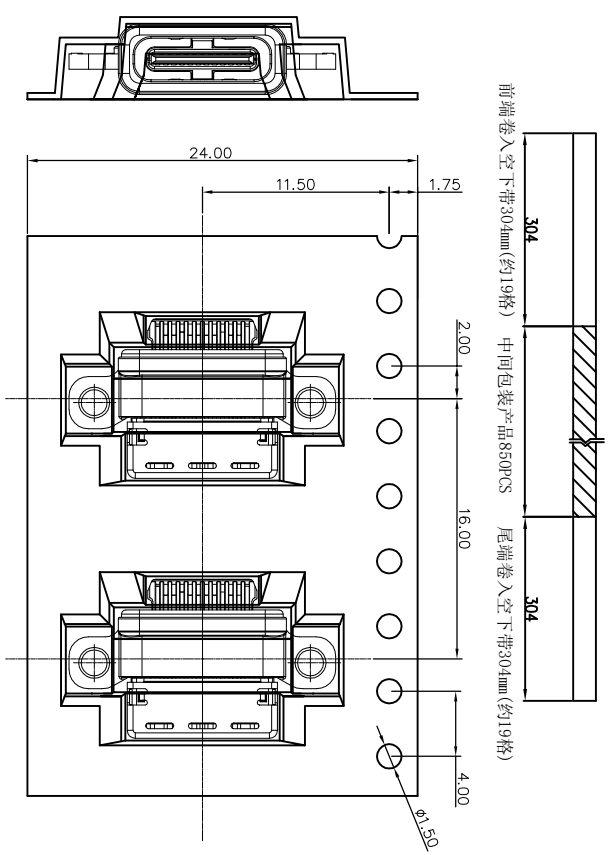
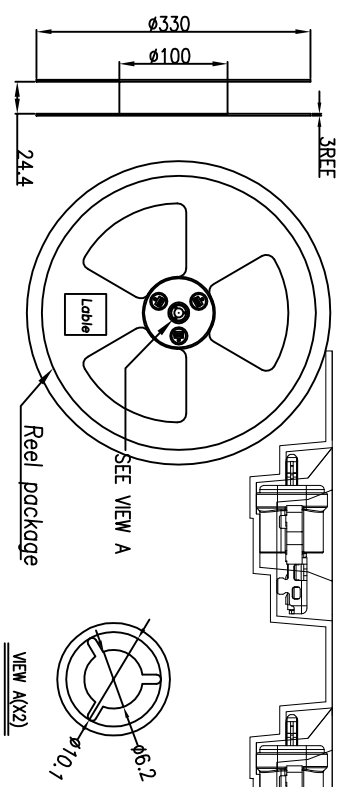
产品料号: 25024-UCAF001-X
产品名称: TYPE C 24P 沉板母座防水 CH=0.37
产品编号: []
画法: []
版本: A0

PIN ASSIGNMENTS:

A1	A2	A3	A4	A5	A6	A7	A8	A9	A10	A11	A12
GND	TX1+	TX1-	Vaus	CC1	D+	D-	SBU1	Vaus	RX2-	RX2+	GND
B12	B11	B10	B9	B8	B7	B6	B5	B4	B3	B2	B1
GND	RX1+	RX1-	Vaus	SBU2	D-	D+	CC2	Vaus	TX2-	TX2+	GND

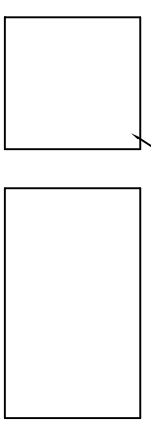
ROHS 客户图

目録 MAPX A0	设定内容 MODIFICATION NEW	日期 DATE 09-10-20
------------------	-----------------------------	------------------------



Pull Out Direction

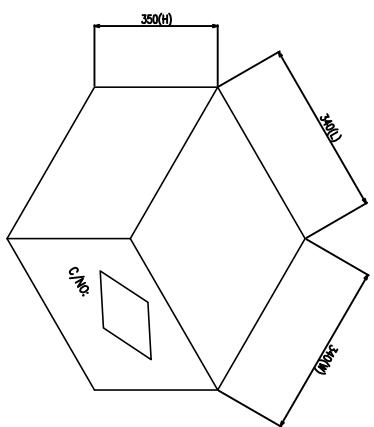
Pull Out Direction



- 1) 用TAPPE将纸箱封实;
- 2) 将标签贴于纸封制

备注 (REMARK)

- 1). 若有未装满之零数箱, 必须以缓冲材料塞满.
- 2). 在搬运过程中要轻柔轻放.
- 3). 在运输中不可堆放过多, 不可有重压现象.
- 4). 上带在黏贴下带时必须平整, 且黏贴处不要出现气泡.



Packing Notes:

1. Reel : 850pcs/ Reel.
2. Carton : 9350pcs/ 11 Reel/ Carton.

产品图

深圳市鑫风雷电子有限公司
Shenzhen xinfenglei Electronic Co., Ltd

公差一览表 TOLERANCE UNLESS OTHERWISE		单位 UNITS	MM	制图 DRAWING	王冠	产品料号 PRODUCT PART NO.	25024-UCAF001-X
X	±0.30	X	±5°	审核 CHKD	雷永健	产品名称 PRODUCT NO.	TYPE C 24P沉板母座防水 CH=0.37
XX	±0.25	X'	±2'	核准 APPD	雷永健	角法 VIEW	
XXX	±0.15	XXX'	±1.5'	日期 DATE		版本 VER	A0