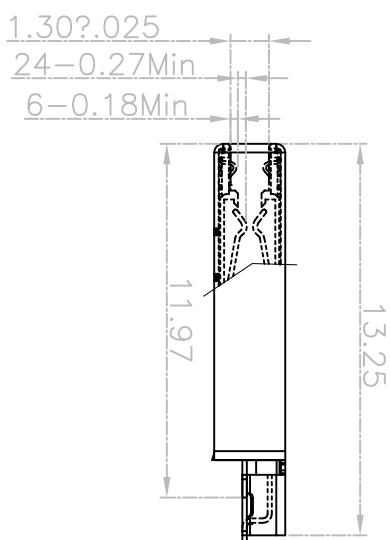
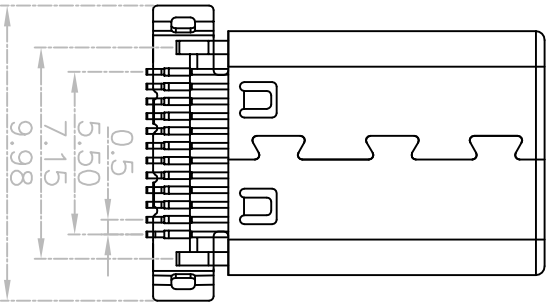
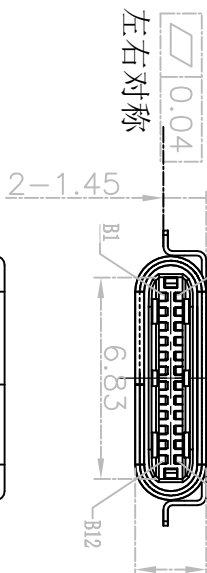
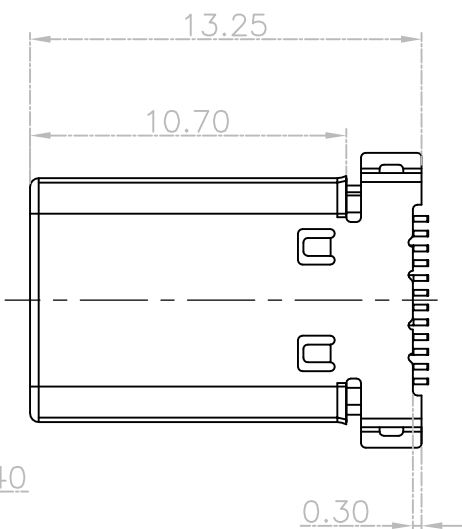


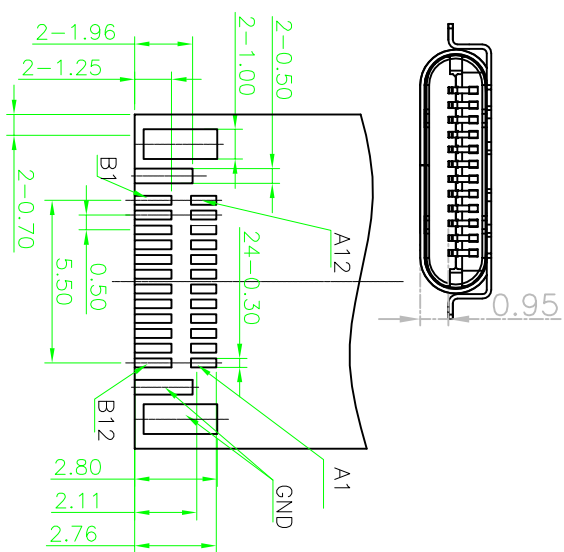
RoHS 客户图



A12	A11	A10	A9	A8	A7	A6	A5	A4	A3	A2	A1
GND	RX2+	RX2-	Vbus	ISBU1	D+	D-	CC	Vbus	TX1-	TX1+	GND
B1	B2	B3	B4	B5	B6	B7	B8	B9	B10	B11	B12

TID号: 7085

- NOTE:
- MATERIAL:
 - INSULATOR: HIGH TEMPERATURE PLASTIC UL 94 V-0;
 - CONTACT: COPPER ALLOY(T=0.15mm)
 - SHELL: STEEL(T=0.15mm)
 - ELECTRICAL CHARACTERISTICS:
 - CONTACT RESISTANCE: 40mΩ Max FOR INITIAL, 10mΩ CHANGE AFTER TEST, MEASURE AT 20mV, 100mA, 2.1 CONTACT RESISTANCE: 5A Max FOR VBUS/GND PIN; 0.9A Max FOR OTHER PIN;
 - CONTACT CURRENT RATING: 100V AC R.M.S.
 - DELECTRIC WITHSTANDING VOLTAGE: 100V AC R.M.S.
 - INSULATION RESISTANCE: 100MΩ Min
 - OPERATING TEMPERATURE: -40°C~85°C
 - MECHANICAL CHARACTERISTICS:
 - MATING FORCE: 5~20 N;
 - UNMATED FORCE: 6~20N AFTER TEST
 - DURABILITY: 10,000 CYCLES, 500 CYCLES/H
 - PLATING:
 - CONTACT: CONTACT AREA PLATING Au 1~30μ", SOLDER AREA PLATING 80~120μ" MATTING Sn.
 - SHELL/SPRING/BUCKLE:20μ" Min PLATING OVER ALL



Recommended PCB Layout
Tolerance ±0.05

深圳市鑫风雷电子有限公司

产品图 PRODUCT CHART DWG		单位 UNITS		MM	
公差一览表 TOLERANCE UNLESS OTHERWISE		制图 DRAWING		王冠	
X	±0.30	X	±5'	审核 CHKD	雷永健
.X	±0.25	.X	±2'	产品料号 PRODUCT PART NO.	00304-UCAM006-X
.XX	±0.30	.XX	±1'	产品名称 PRODUCT NO.	TYPE C公头耦合式连接器0.95端子与外壳金壳
.XXX	±0.15	.XXX	±0.5'	日期 DATE	2009/10/20
		比例 SCALE		1:1	
		日期 DATE		2009/10/20	
		核准 APPD		雷永健	
		角法 VIEW		版本 VER	
				A0	

目錄 MAPX	变更内容 MODIFICATION	日期 DATE
A0	NEW	09-10-20