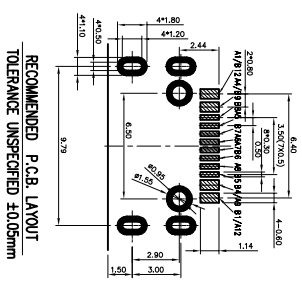
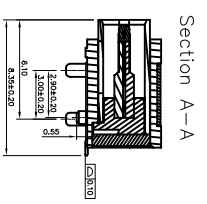
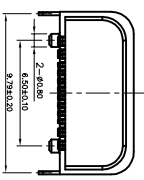
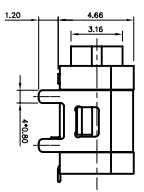
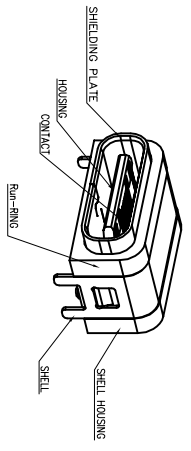
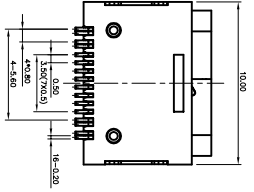
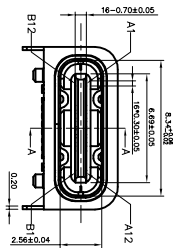
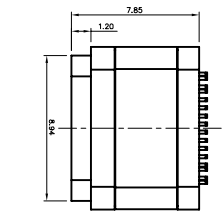
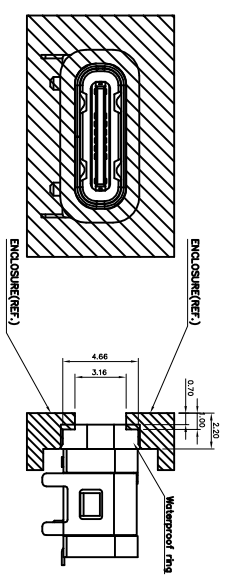


# RoHS 客户图

目錄 MAPX A0	變更內容 MODIFICATION NEW	日期 DATE 09-10-20
------------------	-----------------------------	------------------------



RECOMMENDED P.C.B. LAYOUT  
TOLERANCE UNSPECIFIED ±0.05mm



RECOMMENDED SCHEMATIC DRAWING OF CONNECTOR MATCH CHASSIS

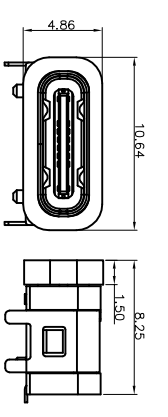
- NOTES:  
SPECIFICATION:
- CURRENT RATING: 3.0A MAX
  - VOLTAGE: 30 VAC
  - TEMPERATURE RANGE: -30 °C ~ 85 °C
  - CONTACT RESISTANCE: 40 MILLIONHM MAX.
  - INSULATION RESISTANCE: 100 MEGOHMS MIN.
  - INSERTION FORCE: 6N~20N
  - UNMATING FORCE: 8N~20N
  - DURABILITY: 10,000 CYCLES
  - WATER PROOFNESS: THISPRODUCTS BASED ON IPX7(1.5M 30min).



(防水等級IPX7 1.5米 30分鐘)

## USB TYPE-C PIN ASSIGNMENTS

PIN NUMBER	SIGNAL NAME	PIN NUMBER	SIGNAL NAME
A1	GND	B12	GND
A4	VBUS	B9	VBUS
A5	CC1	B8	SBU2
A6	Dp1	B7	Dn2
A7	Dn1	B6	Dp2
A8	SBU1	B5	CC2
A9	VBUS	B4	VBUS
A12	GND	B1	GND



Sketch with waterproof ring

## 产品图

公差一览表  
TOLERANCE UNLESS OTHERWISE SPECIFIED

公差	范围	比例	中值	公差
X	±0.30	X'	±5'	
.X	±0.25	.X'	±2'	
.XX	±0.30	.XX'	±1'	
.XXX	±0.15	.XXX'	±0.5'	

DATE: 2009/10/20

深圳市鑫风雷电子有限公司  
Shenzhen xinfenglei Electronic Co., Ltd

NO	DESCRIPTION	QTY	MATERIAL	REMARKS
6	Run-RING	IPSS	Silica gel	BLACK
5	SHELL	IPCS	STAINLESS STEEL	NI Plated;40U"MIN
4	SHIELDING PLATE	IPSS	STAINLESS STEEL	NI Plated;40U"MIN
3	CONTACT	ISST	Brass	Contact Plating: Au (10"-30") Soldering Plating: Au 10"
2	SHELL HOUSING	IPSS	LCP	BLACK
1	HOUSING	IPSS	LCP	BLACK