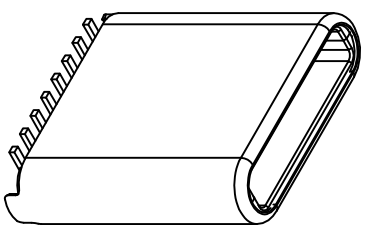
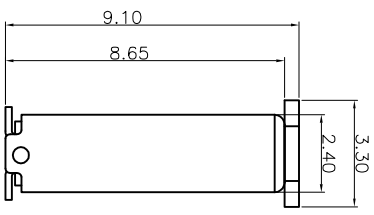
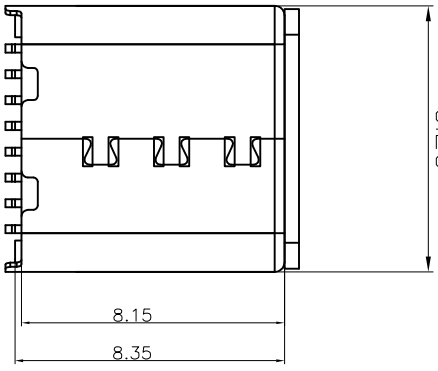
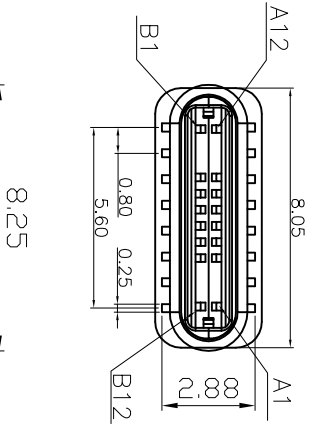


RoHS 客户图

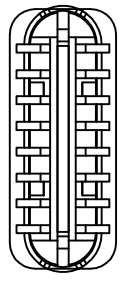
| | | |
|------------|----------------------|------------|
| 目錄 MAPX | 變更內容 MODIFICATION | 日期 DATE |
| A0 | NEW | 09-10-20 |



NOTE :
TC01MA016SX01XR

- 1.Selective Plating
S1:5u" Gold In Contact Area
100u" Tin In Tail Area
S2:0.8u" Gold In Contact Area
100u" Tin In Tail Area
S3:10u" Gold In Contact Area
100u" Tin In Tail Area
S4:15u" Gold In Contact Area
100u" Tin In Tail Area
S5:30u" Gold In Contact Area
100u" Tin In Tail Area
S9:3u" Gold In Contact Area
100u" Tin In Tail Area

| NO. | DESCRIPTION | MATERIAL | COLOR | REMARK |
|-----|-------------|-----------------|-------------|-------------|
| 1 | SHELL | STAINLESS STEEL | — | Ni Plated |
| 2 | TERMINAL | COPPER ALLOY | — | Gold Plated |
| 3 | Latch | STAINLESS STEEL | — | NI Plated |
| 4 | PLASTIC | HIGH TEMP | BLACK/WHITE | UL 94V-0 |
| 5 | | | | |
| 6 | | | | |
| 7 | | | | |



产品图

深圳市鑫风雷电子有限公司

| | | | | | | | |
|-------------------------------------|-------|-------------|-------|---------------|-----|--------------------------|----------------------------|
| 公差一览表 TOLERANCE UNLESS OTHERWISE | | 单位 UNITS | MM | 制图 DRAWING | 王冠 | 产品料号 PRODUCT PART NO. | 20004-UCAM002-B |
| X | ±0.30 | X' | ±5' | 审核 CHKD | 雷永健 | 产品名称 PRODUCT NO. | TYPE C 16P公头立式SMT H=8.65无脚 |
| XX | ±0.25 | X'' | ±2' | 核准 APPD | 雷永健 | 角法 VIEW | |
| XXX | ±0.30 | XX' | ±1' | 日期 DATE | | 版本 VER | A0 |
| | ±0.15 | XXX' | ±0.5' | | | | |