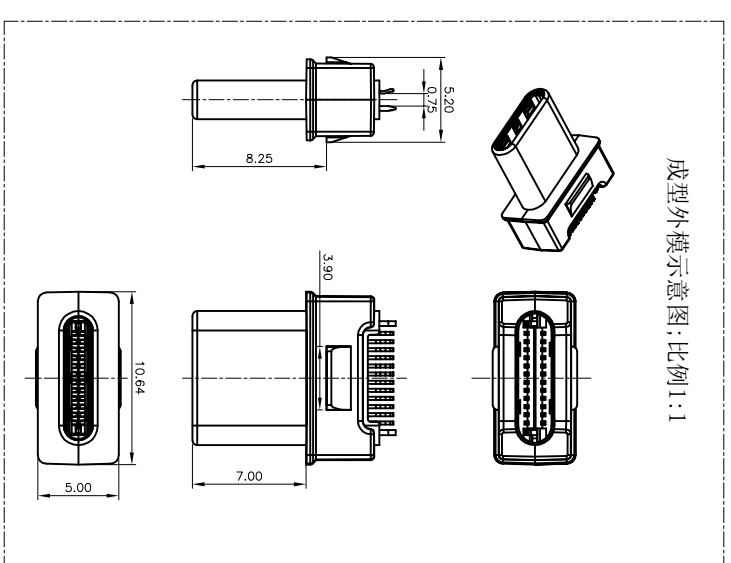
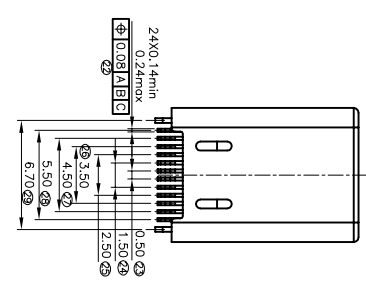
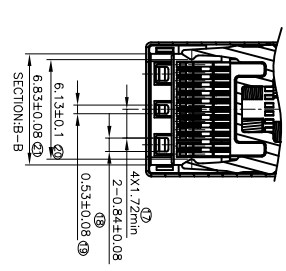
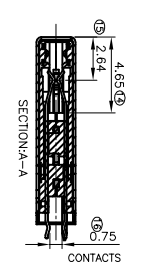
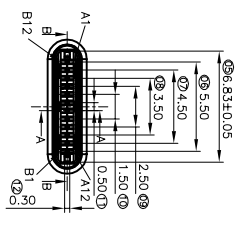
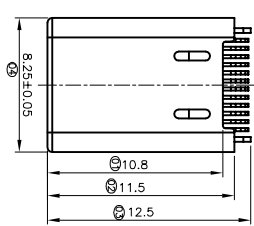
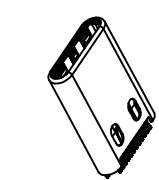


ROHS

客户图

目 录 MAPX A0	设计内容 MODIFICATION NEW	日期 DATE 09-10-20
-------------------	-----------------------------	------------------------



成型外模示意图：比例1:1

SPECIFICATION
MATERIAL
 See drawing
STANDARD DATA
 Rating current:5A MAX
ELECTRICAL
 Insulator resistance:100Mohms Min.
 Withstanding voltage:100VAC/minute
 Contact resistance:40mohms Max
MECHANICAL
 Mating force:5~20N.
 Unmating force:8~20N.
 Durability:10000 cycles.
DRAWINGS MARKED FOR FAI DIMENSION.

产品图

PRODUCT CHART DWG

深圳市鑫风雷电子有限公司
 Shenzhen xinfenglei Electronic Co., Ltd

公差一览表 TOLERANCE UNLESS OTHERWISE SPECIFIED	单位 UNITS	比例 SCALE	日期 DATE	制图 DRAWING	审核 CHKD	核准 APPRD	产品料号 PRODUCT PART NO.	产品名称 PRODUCT NO.	角法 VIEW	版本 VER
X ±0.30	MM	1:1	2009/10/20	王冠	雷永健	雷永健	26011-UCAM007-X	TYPE C 24P公头接伸(带成型) 厚度2.4	⊕	A0
X ±0.25										
XX ±0.30										
XXX ±0.15										

NO.	DESCRIPTION	QTY.	MATERIAL	TREATMENT
1	SHIELD	1	SUS316L T0A15	PLATING Ni 500nm
2	HOUSING	2	LCP	MOLD COLOR BLACK
3	CONTACT	12	CR025 TM 02 T0A15	CONTACT PLATING 100nm
4	GND LATCH	1	SUS 301 T0A20	MODEL PLATED ORGANIZING WITH LUDO RESIN THE ALLOY
5	Emt spring	2	SUS301R-H T0A10	Chem (In)
6	垫圈	1	PA6 (UL94 V-0)	Black (Paint)

A12	A11	A10	A9	A8	A7	A6	A5	A4	A3	A2	A1
GND	RX2+	RX2-	Vbus	SBU1	Dn1	CC	Vbus	TX1-	TX1+	GND	
GND	TX2+	TX2-	Vconn	DP2	Dn2	SBU2	Vbus	FX1-	FX1+	GND	
B1	B2	B3	B4	B5	B6	B7	B8	B9	B10	B11	B12