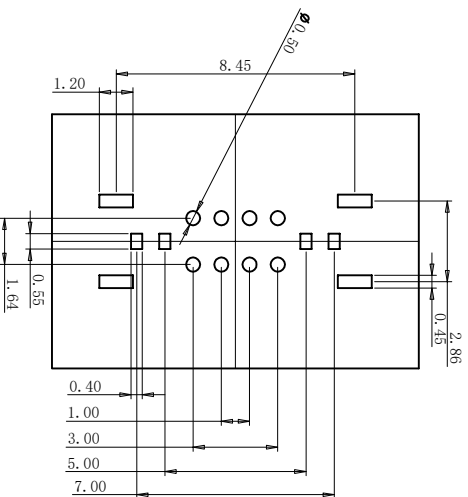
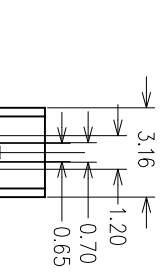
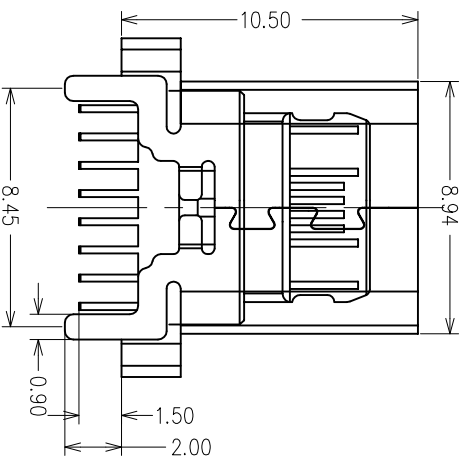
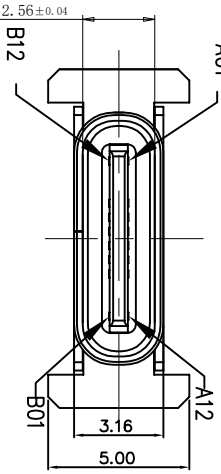
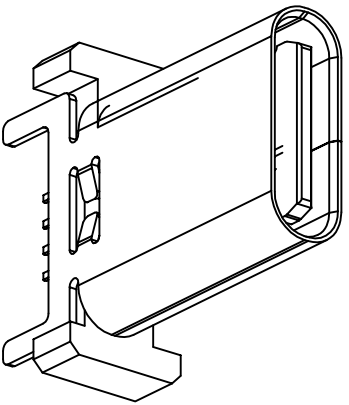
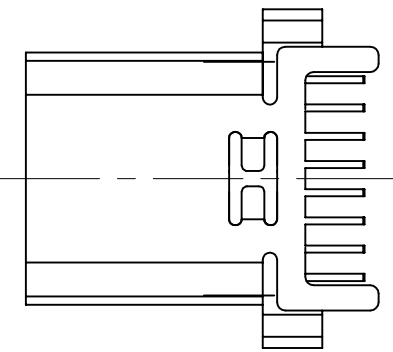
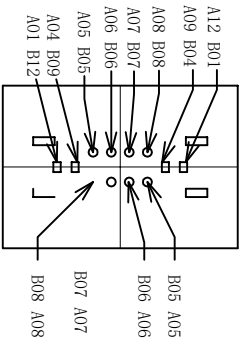


RoHS 客户图



RECOMMENDED P.C.B. LAYOUT (1:1.00mm)
TOLERANCE UNSPECIFIED ±0.05mm



- ELECTRICAL CHARACTERISTICS:
 - 1-1. CONTACT RESISTANCE: 30m MAX. Ω
 - 1-2. DIELECTRIC WITHSTANDING VOLTAGE: 100V AC FOR ONE MINUTE.
 - 1-3. INSULATION RESISTANCE: 100M MIN. MEASURED BY 500 VDC.
- MECHANICAL CHARACTERISTICS:
 - 2-1. INSERTION FORCE : 0.5-2.0Nf (0.8-2.9ozf)
 - 2-2. WITHDRAWAL FORCE : 0.8-2.0Nf (0.8-2.9ozf)
- LIFE TEST: 10,000 CYCLES.

A1	010	010	010	010	010
A2	010	010	010	010	010
A3	010	010	010	010	010
A4	010	010	010	010	010
A5	010	010	010	010	010
A6	010	010	010	010	010
A7	010	010	010	010	010
A8	010	010	010	010	010
A9	010	010	010	010	010
A10	010	010	010	010	010
A11	010	010	010	010	010
A12	010	010	010	010	010
B1	010	010	010	010	010
B2	010	010	010	010	010
B3	010	010	010	010	010
B4	010	010	010	010	010
B5	010	010	010	010	010
B6	010	010	010	010	010
B7	010	010	010	010	010
B8	010	010	010	010	010

深圳市鑫风雷电子有限公司

PRODUCT CHART DWG

公差一按表

公差一按表	单位	制图	审核	审核	审核	日期	日期	产品料号	产品名称	图法	版本
TOLERANCE UNLESS OTHERWISE	UNITS	DRAWING	审核	审核	审核	SCALE	DATE	PRODUCT PART NO.	TYPE C 16P 封装 180度 DIP H=10.5	角法	版本
X ±0.30	X'	±5'	雷永健	雷永健	雷永健	1:1	2009/10/20	01002-UCAF026-X		角法	A0
XX ±0.25	X''	±2'									
XXX ±0.20	XXX'	±1'									
XXX ±0.15	XXX''	±0.5'									