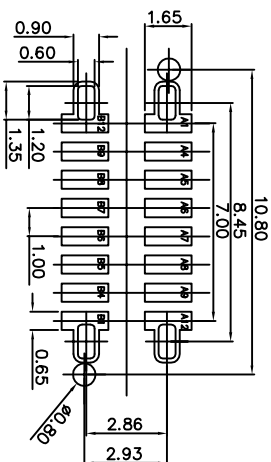
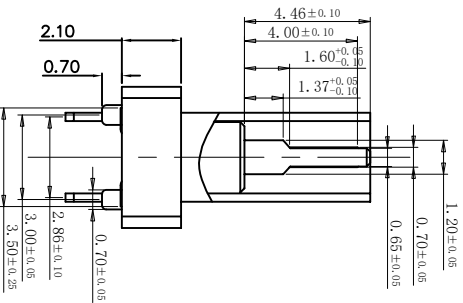
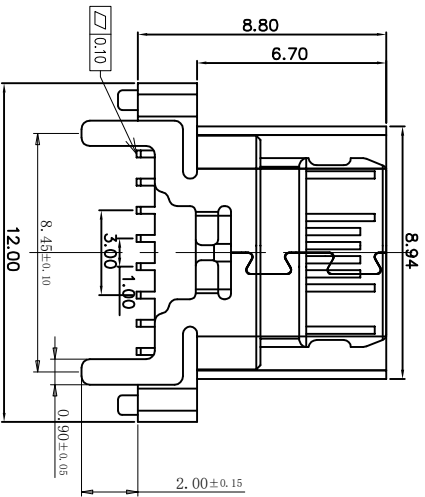
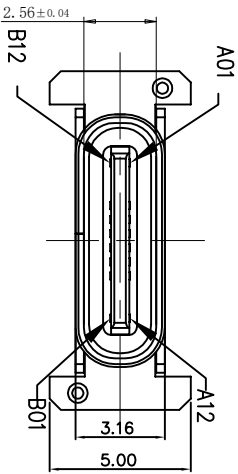
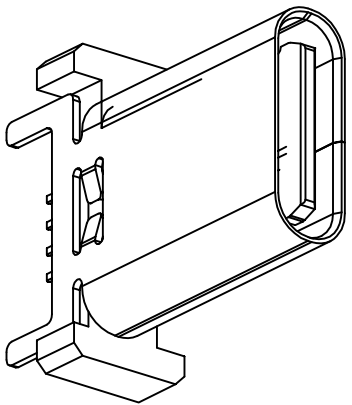
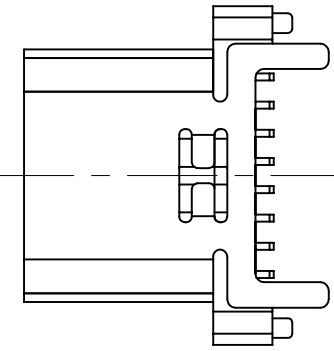


RoHS 客户图



1. ELECTRICAL CHARACTERISTICS:
 - 1-1. CONTACT RESISTANCE: 30m Ω MAX.
 - 1-2. DIELECTRIC WITHSTANDING VOLTAGE: 100V AC FOR ONE MINUTE.
 - 1-3. INSULATION RESISTANCE: 100M Ω MIN. MEASURED BY 500 VDC.
2. MECHANICAL CHARACTERISTICS:
 - 2-1. INSERTION FORCE : 0.5-2.0Nf (BER.)
 - 2-2. WITHDRAWAL FORCE : 0.8-2.0Nf (BER.)
3. LIFE TEST: 10,000 CYCLES.

RECOMMENDED P.C.B. LAYOUT (T:1.00mm)
TOLERANCE UNSPECIFIED ±0.05mm

A1	QD	B12	QD
A4	WNS	B9	WNS
A5	CD	B8	WNS
A6	Y1	B7	WNS
A7	W1	B6	Q2
A8	S01	B5	CD
A9	WNS	B4	WNS
A10	QD	B3	QD
B10	WNS	B2	WNS
B11	WNS	B1	WNS

深圳市鑫风雷电子有限公司

产品图 PRODUCT CHART DWG		单位 UNITS		制图人 DRAWING		产品料号 PRODUCT PART NO.	
公差一览表 TOLERANCE UNLESS OTHERWISE		MM		王冠		O1002-UCAF019-X	
X	±0.30	X'	±5'	审核	雷永健	产品名称	TYPE O 16P每座立式SWT H-B. B
XX	±0.25	X''	±2'	核准	雷永健	图号	
XXX	±0.20	XXX'	±1'	日期	2009/10/20	画法	
	±0.15	XXX''	±0.5'	DATE		版本	A0