

1 ROHS

2 客户图

3

4

5

6

7

8

9

10

目錄

MAPX

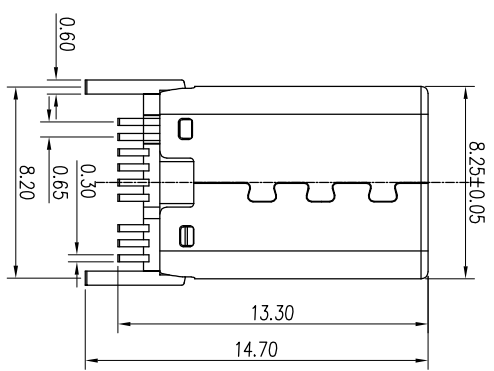
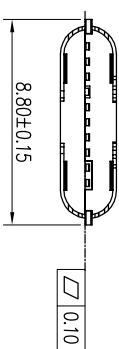
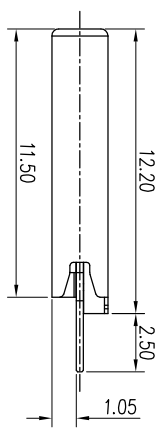
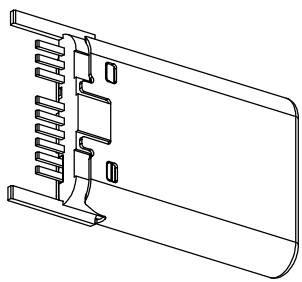
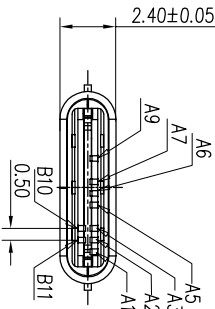
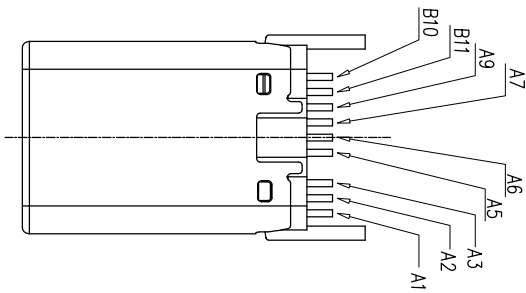
A0

變更內容  
MODIFICATION

NEW

日期  
DATE

09-10-20



Specification:

1. Electrical Characteristics:  
 Contact Current Rating: 3 Amperes Max.  
 Rated Voltage: 30V Max.  
 Dielectric Withstanding Voltage: AC 100V r.m.s.  
 Insulation Resistance: 100 MΩ Minimum.  
 Contact Resistance: 40 mΩ Maximum.

2. Environmental:  
 Operating Temperature: -30°C~+85°C.

3. Mechanical Characteristics:  
 Insertion Force: 20N MAX.  
 Withdrawal Force: 5~20N.  
 Durability Cycles: 10000 Cycles.

NO.	NAME	DESCRIPTION
5	EMC SPRING	Stainless Steel; SUS201, T=0.10mm;
4	CONTACT	Copper Alloy; AuNiSn;
3	LATCH	Stainless Steel; SUS301, T=0.3mm;
2	HOUSING	LCP Thermoplastic; UL94V-0;
1	SHELL	Stainless Steel; SUS316, T=0.15mm;

A12	A11	A10	A9	A8	A7	A6	A5	A3	A2	A1	
			VBUS	D-	D+	CC		TX-	TX+	GND	
								RX1-	RX1+		
B1	B2	B3	B4	B5	B6	B7	B8	B9	B10	B11	B12

产品图

深圳市鑫风雷电子有限公司

公差一览表		单位	MM	制图	王冠	产品料号	23005-UCAM018-X
TOLERANCE UNLESS OTHERWISE	OTHERWISE	UNITS		DRAWING		PRODUCT PART NO.	
X	±0.30	X'	±5'	审核	雷永健	产品名称	TYPE C 9P公头铆合式无脚
XX	±0.25	X''	±2'	核准	雷永健	PRODUCT NO.	
XXX	±0.15	XXX'	±0.5'	日期	2009/10/20	角法	
				DATE		VIEW	
				版本	A0	VER	