

# RoHS 客户图

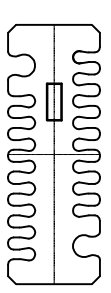
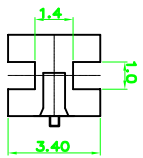
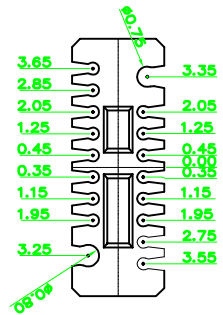
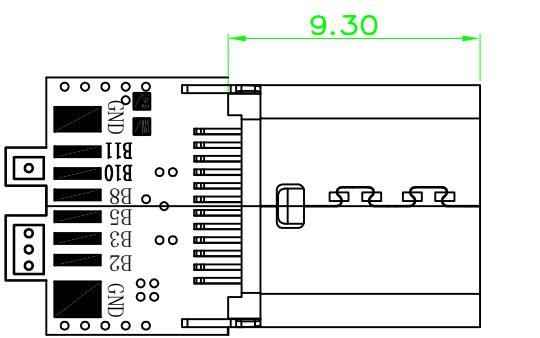
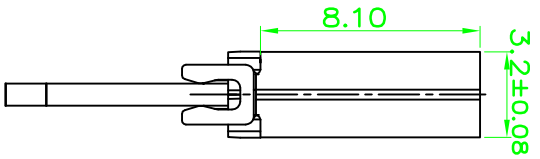
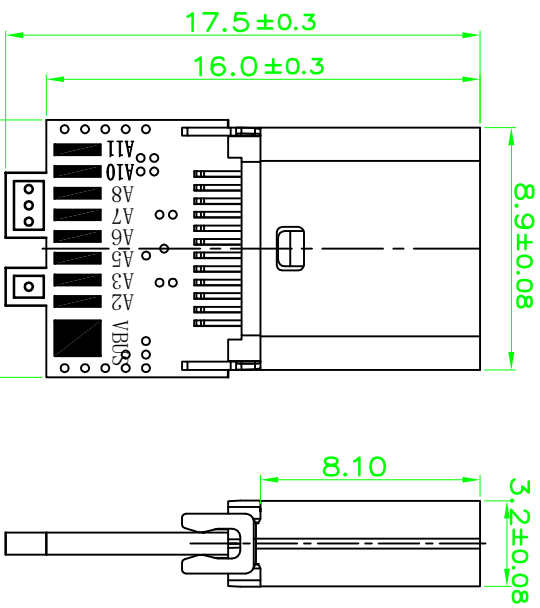
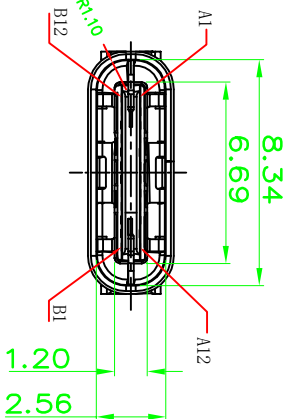
目錄 MAPX	修改內容 MODIFICATION	日期 DATE
A0	NEW	09-10-20

### 注: 1. 电性参数

接触电阻: 最初30mΩ Max,  
寿命测试后变化±10  
绝缘阻抗: 100MΩ Min  
耐压: 250V AC

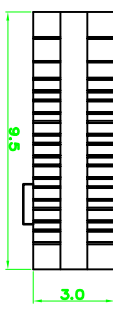
### 2. 机械参数

插入力: 5-20N MAX.  
拔出力: 8-20N MIN.  
耐久性: 10000 Cycles 500  
cycles per hour



线路原理图

A4, A9, B4, B9	PLUG端	PCB焊盘
A1, A12, B1, B12, She11	GND	VBUS
A2		
A3		
A5		
A6/B6		
A7/B7		
A8		
A10		
A11		
B2		
B3		
B5		
B8		
B10		
B11		



1	TERMINAL-Molding	2PCS	LCP+30%G.F UL94-V0
2	HOUSING-Molding	1PCS	LCP+30%G.F UL94-V0
3	SHELL	1PCS	SUS 304/201 HV310-370; T=0.25, Ni 80u" 鍍 鍍48H
4	EMI PLATE	1PCS	SUS 304 HV310-370; T=0.10
5	TERMINAL	24PCS	C7025 HV190-210; T=0.15, Au: R1U, 鍍00u", 鍍48H
6	SPRING	1PCS	SUS 301 HV310-370; T=0.15.
7	PCB	1PCS	FR-4 PCB線板 數 T=0.8mm + 電鍍

## 产品图 深圳市鑫风雷电子有限公司

公差一览表 TOLERANCE UNLESS OTHERWISE SPECIFIED		单位 UNITS	MM
X	±0.30	X'	±5'
X	±0.25	X'	±2'
XX	±0.20	XX'	±1'
XXX	±0.15	XXX'	±0.5'

产品料号 PRODUCT PART NO.	24009-UCAP002-X
产品名称 PRODUCT NAME	TYPE C母座弹针式带板SC-C 全功能6个孔
制图 DRAWING	王冠
审核 CHECK	雷永健
核准 APPROVE	雷永健
日期 DATE	2009/10/20
比例 SCALE	1:1
角法 VIEW	
版本 VER	A0