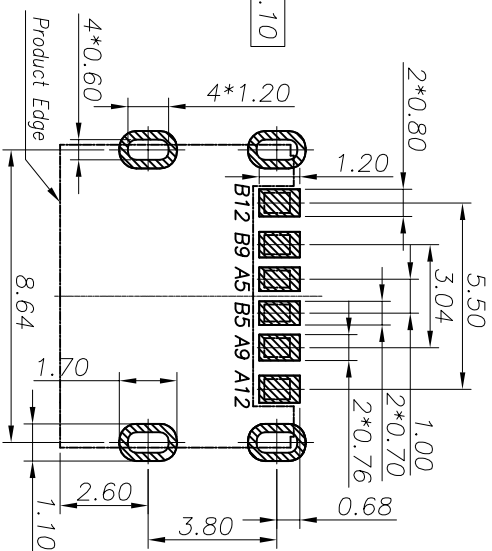
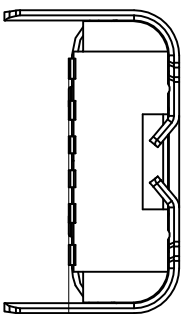
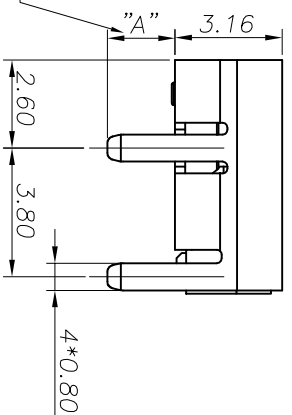
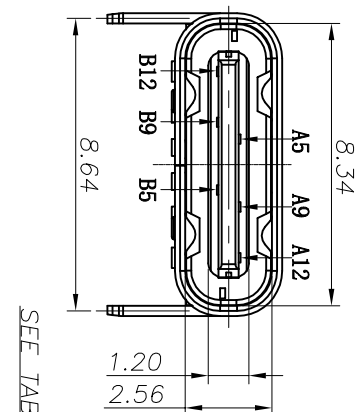
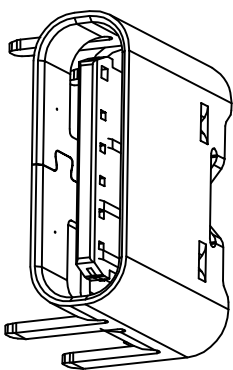
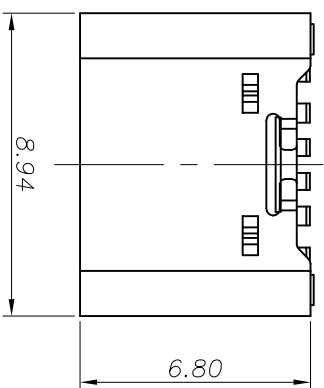


ROHS 客户图

A5	CC1	B12	GND
A9	VBUS	B9	VBUS
A12	GND	B5	CC2
PIN	SIGNAL NAME	PIN	SIGNAL NAME



RECOMMENDED P.C.B. LAYOUT
TOLERANCE UNSPECIFIED ±0.05mm

TABLE 1

ITEM	P/N	"A" DIMENSIONS
1	001	2.00mm
2	002	1.10mm
3	003	0.7mm

3	SHELL	STAINLESS STEEL	Ni:50u" Plated	1SET
2	CONTACT	COPPER ALLOY	Au1u"/Ni:50u" Plated	1SET
1	HOUSING	HIGH TEMPERATURE PLASTIC	BLACK	1PS
NO.	DESCRIPTION	MATERIAL	REMARKS	QTY

产品图

深圳市鑫风雷电子有限公司

PRODUCT CHART DWG

公差一览表

TOLERANCE UNLESS OTHERWISE SPECIFIED	UNIT	SCALE	DATE
.XX	±0.30	XX'	±1'
.XXX	±0.15	XXX'	±0.5'

单位	MM	制图	王冠	产品料号	24001-UCAF001-A
比例	1:1	审核	雷永健	产品名称	TYPE C母座上6P SMT
日期	2009/10/20	核准	雷永健	角法	版本
				VIEW	A0

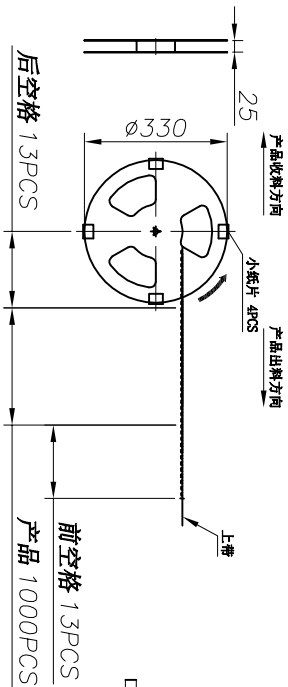
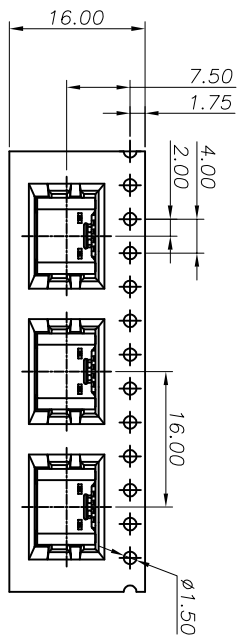
目錄	变更内容	日期
MAPX	MODIFICATION	DATE
A0	NEW	09-10-20

NOTES:

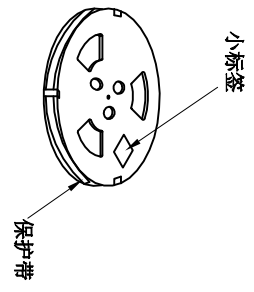
- SPECIFICATION:
1. CURRENT RATING: 3.0A MAX
 2. VOLTAGE: 100 VAC
 3. TEMPERATURE RANGE: -30 °C ~ 85 °C
 4. CONTACT RESISTANCE: 40 MILLIONHM MAX
 5. INSULATION RESISTANCE: 100 MEGOHMS MIN.
 6. INSERTION FORCE : 5N~20N
 7. UNMATING FORCE: 8N~20N
 8. DURABILITY: 10000 CYCLES

ROHS 客户图

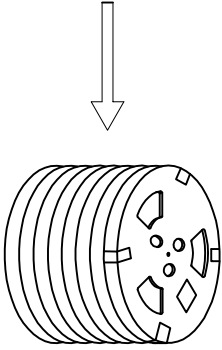
目錄 MAPX A0	設定內容 MODIFICATION NEW	日期 DATE 09-10-20
------------------	-----------------------------	------------------------



① 产品入载带示意图



② 卷盘贴标签示意图



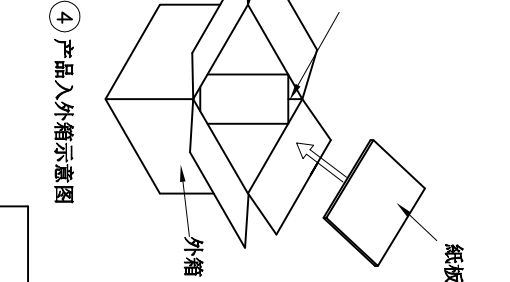
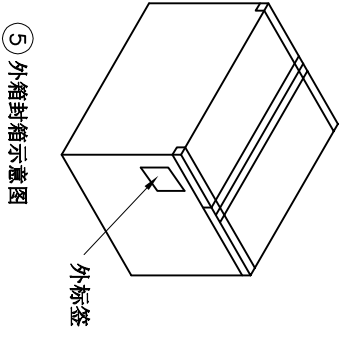
③ 16 盘产品叠层示意图

NOTE:
 1. QUANTITY/REEL: 1000 PCS
 数量/卷: 1000 PCS
 QUANTITY/INNER CARTON: 1000 X 16 = 16000 PCS
 数量/箱: 1000 X 16 = 16000 PCS
 2. FREE 13 CAVE IN THE FRONT CARRIER
 13 CAVE IN THE END CARRIER.
 包装带内圈空13格, 外圈空13格.

ITEM	DESC.	MATERIAL	REMARKS	QTY
1	成品	C TYPE母座成品		16000
2	CARRIER TAPE	PET	W=16mm T=0.35mm	
3	COVER TAPE	PET	W=13.3mm T=0.05mm	
4	小标签	L102mm*W59mm		16
5	卷盘	$\phi 330\text{MM} * W28.5\text{MM}$		16
6	天地板	L320mm * W320mm		2
7	外标签	L102mm * W102mm		1
8	三角柱	L300mm * W210mm		4
9	外箱	L330mm * W330mm * 320mm		1

产品图 深圳市鑫风雷电子有限公司

公差一览表		单位		制图		产品料号	
TOLERANCE UNLESS OTHERWISE		UNITS		DRAWING		PRODUCT PART NO.	
X	±0.30	X'	±5'	王冠	24001-UCAF001-A		
X	±0.25	X'	±2'	雷永健	TYPE C母座板上6P SMT		
.XX	±0.30	.XX'	±1'	审核	角法	版本	
.XXX	±0.15	.XXX'	±0.5'	核准	视图	版本	A0
日期	2009/10/20	核准	雷永健	角法	视图	版本	A0



⑤ 外箱封箱示意图

④ 产品入外箱示意图