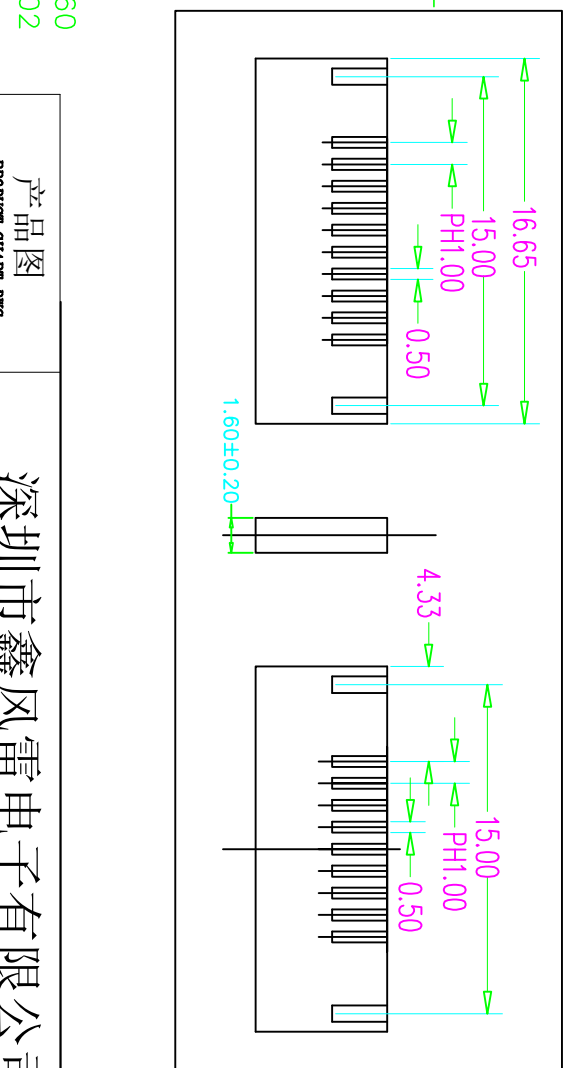
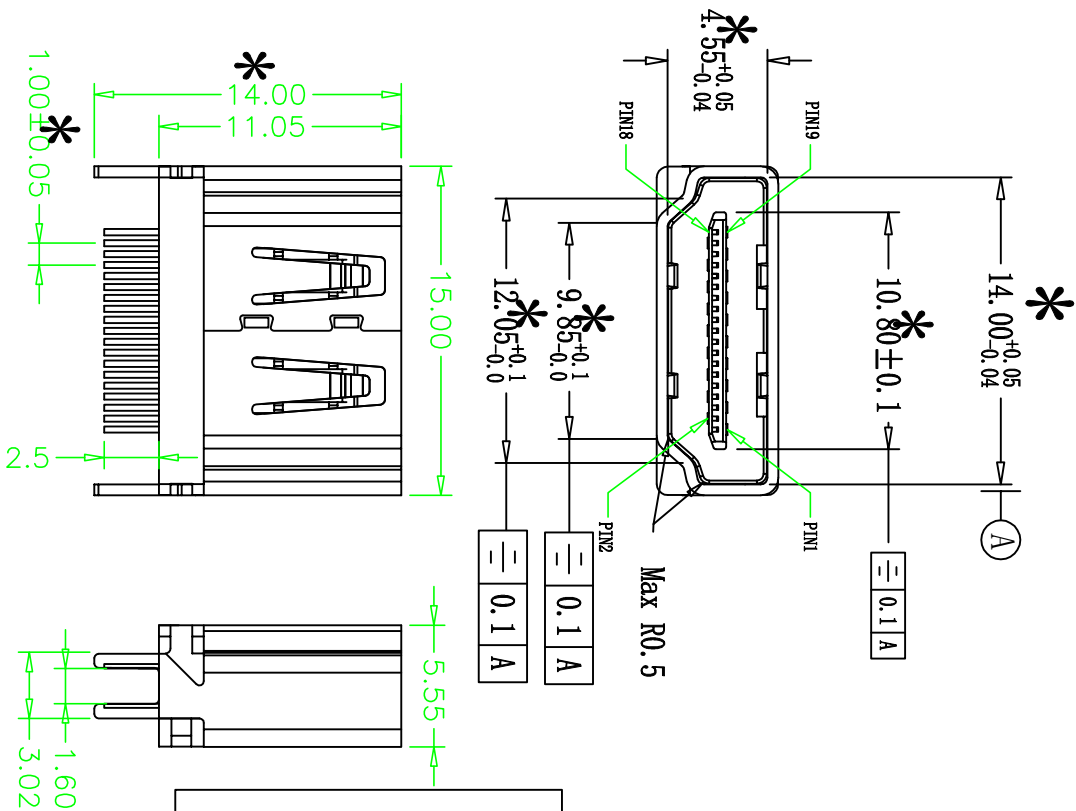


RoHS 客户图



- SPECIFICATION**
- Electrical characteristics
 - Contact Current Rating: 0.5 A
 - Dielectric Withstanding Voltage: 300V AC
 - Insulation Resistance: a. Min 100M Ω at 50V/DC
 - b. Min 10M Ω at 150V/DC
 - Mechanical
 - Temperature Range: -20° C to $+85^{\circ}$ C
 - Contact Resistance: $30m\Omega$ MAX
 - Wetting Res: 44. IN MAX
 - Insertion Res: 9. 8N MIN: 39. 2N MAX
 - Durability: 10000 Cycles
 - Material:
 - HOUSING: THERMOPLASTICS HIGH TEMP LCP+GLASS
 - FIBER BLACK COLOR: UL94V-0
 - CONTACT: Copper Alloy, $\pm 0.20MM$
 - SHELL: Copper Alloy (SP5C), $\pm 0.50MM$
 - PLATING:
 - CONTACT: $1 \sim 30\mu$ GOLD/TIN PLATING ON CONTACT AREA
 - 100 μ MIN TIN PLATING ON SOLDER TAILS
 - 50 μ MIN NICKEL UNDERPLATING OVER ALL
 - SHELL: 30 μ NICKEL UNDERPLATING OVER ALL
5. *Key control size

目录 MAPX	变更内容 MODIFICATION	日期 DATE
A0	NEW	09-10-20

产品图

PRODUCT CHART DWG

深圳市鑫风雷电子有限公司

公差一览表		单位		制图		产品料号	
TOLERANCE UNLESS OTHERWISE		UNITS		DRAWING		PRODUCT PART NO.	
X	± 0.30	X'	$\pm 5'$	王冠	00612-HDMI1A1-C		
X	± 0.25	X'	$\pm 2'$	雷永健	产品名称	HDMI A TYPE 19P母座夹板1.6	
XX	± 0.30	XX'	$\pm 1'$	雷永健	角法		
XXX	± 0.15	XXX'	$\pm 0.5'$		版本	A0	
				日期	2009/10/20		
				比例	1:1		
				SCALE			
				日期	2009/10/20		
				DATE			