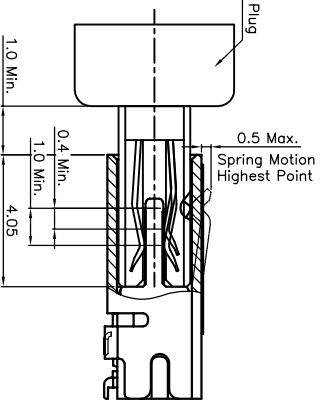
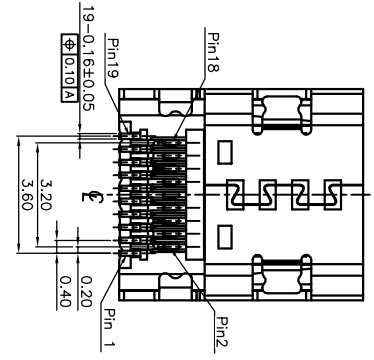
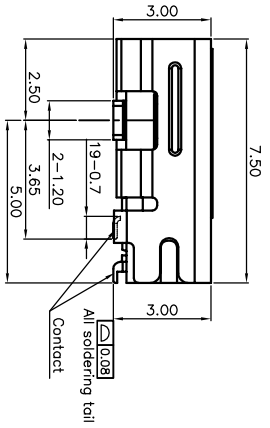
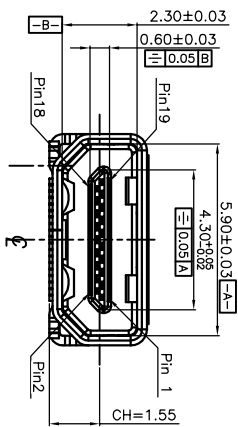
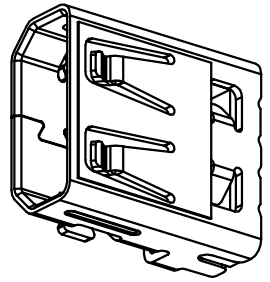
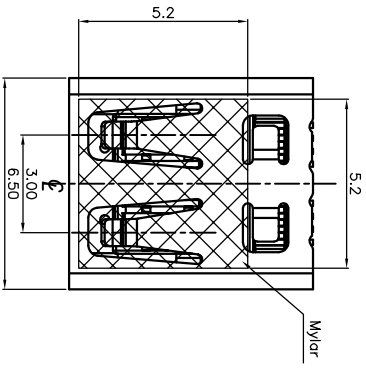
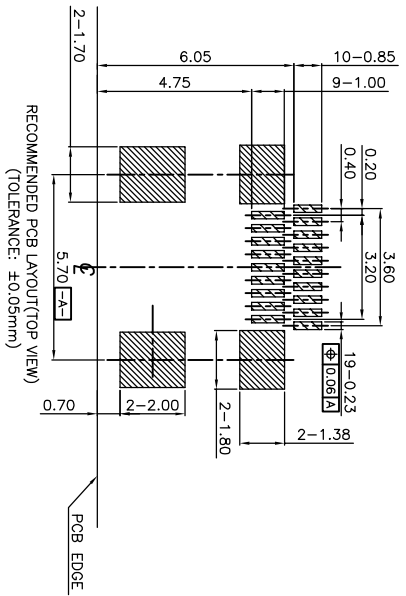


ROHS 客户图



Notes:

- Materials
 - Housing: LCP+30% G/F, Black, UL94 V-0;
 - Contact: Phosphor Copper (C5191), Gold Plating at mating area, Matte Tin or Au Plating at solder tail, all overNickel;
 - Shell: Phosphor Copper (C5191);
- Ratings
 - Current Rating: 0.3A ;
 - Operating Temperature: -40~ 85;
- Electrical Requirement:
 - LCR: Excluding Conductor Resistance 10mΩ Max.(Target design value), Contact: 30mΩ Max. changed (Final), Shell: 50mΩ Max. Changed (Final);
 - Dielectric Withstanding Voltage: 150V AC (RMS) for 1 minute (Mated), 250V AC (RMS) for 1 minute (Unmated);
 - Insulation Resistance: 10MΩ Min. @ 150V DC (Mated), 100MΩ Min. @ 500V DC (Unmated);
- Mechanical Performance:
 - Insertion force: 44.1N (4.5kgf) Max.;
 - Withdrawal force: 4.9~25N (0.5~2.5kgf);
 - Durability life: 5,000 Cycles;
- IR Reflow: the peak temperature on board shall be maintained for 10 seconds at 260°.



PIN	Signal Assignment
1	Hot Plug Detect
2	Utility
3	TMD5 Detq2+
4	TMD5 Detq2 Shield
5	TMD5 Detq2-
6	TMD5 Detq1+
7	TMD5 Detq1 Shield
8	TMD5 Detq1-
9	TMD5 Detq0+
10	TMD5 Detq0 Shield
11	TMD5 Detq0-
12	TMD5 Clock+
13	TMD5 Clock Shield
14	TMD5 Clock-
15	CEC
16	DDC /CEC Ground
17	SCL
18	SDA
19	+5V Power

产品图

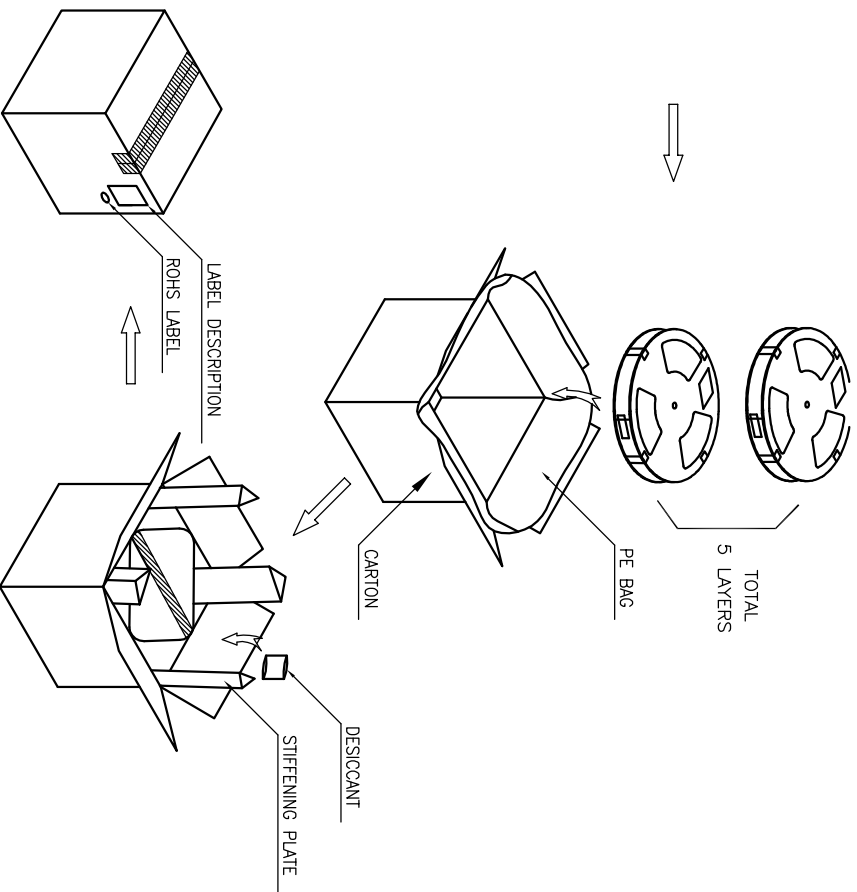
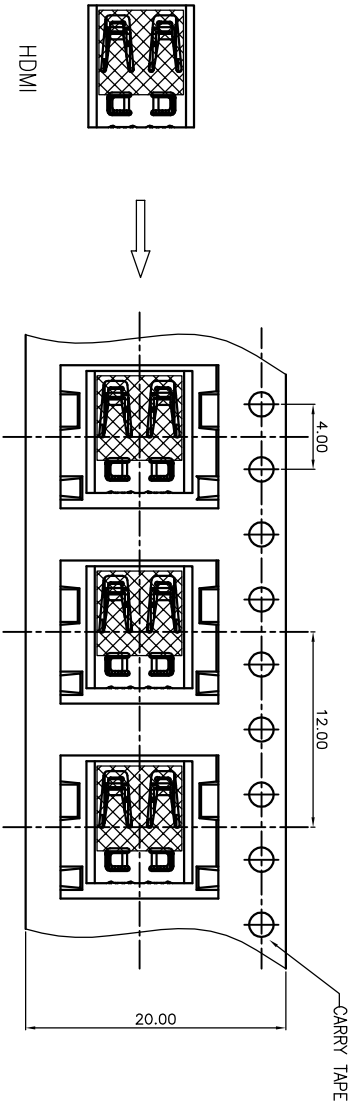
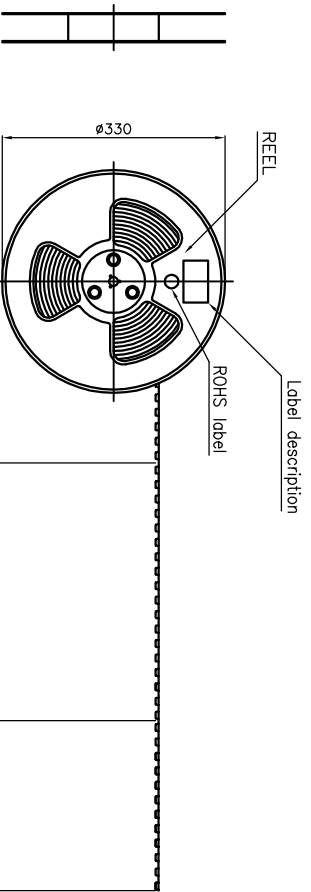
深圳市鑫风雷电子有限公司

公差一览表		单位	MM	制图	王冠	产品料号	16003-HDDF005-X
X	±0.30	X	±5'	审核	雷永健	产品名称	HDMI Type D 19Pin 板上型
XX	±0.25	X'	±2'	核准	雷永健	CH=1.55, 封装SMT, 外壳全镀5.7	
XXX	±0.15	XXX'	±0.5'	日期	2009/10/20	角法	版本
				DATE		VIEW	A0

ROHS

客户图

目錄 MAPX	變更內容 MODIFICATION	日期 DATE
A0	NEW	09-10-20



HDMI

- Notes:
1. The start and end of each reel, based on the actual quantity, reserved 10--15pcs space;
 2. Peel off force of top tape: 10g~130g, peel deg.:165#175?
 3. peel speed: 250~300mm/min;
 4. Carton size: 350*350*155mm.
4. QTY: 1200pcs/reel, 5reel/carton, total 6000pcs/carton;

产品图

PRODUCT CHAIR DWG

深圳市鑫风雷电子有限公司

公差一览表 TOLERANCE UNLESS OTHERWISE		单位 UNITS	制图 DRAWING	产品料号 PRODUCT PART NO.
X	±0.30	X	王冠	16003-HDDF005-X
X	±0.25	X	审核 CHD	产品名称 HDMI Type D 19Pin 板上型
.XX	±0.30	.XX	核准 APPD	CH=1.55,双排SMT,外壳全贴5.7
.XXX	±0.15	.XXX	日期 DATE	角法 VIEW
			2009/10/20	版本 VER
				A0