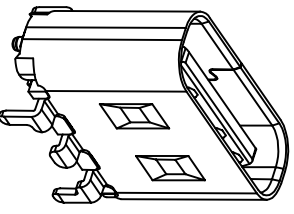
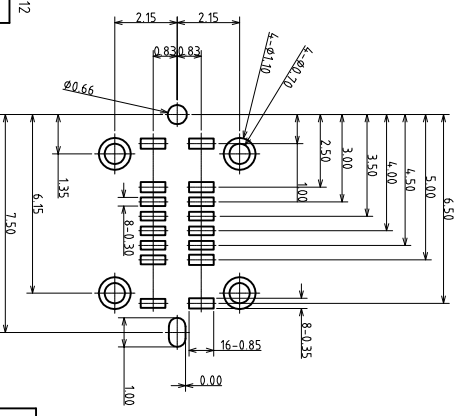
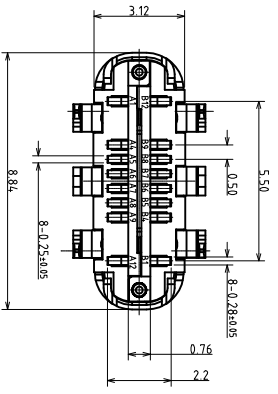
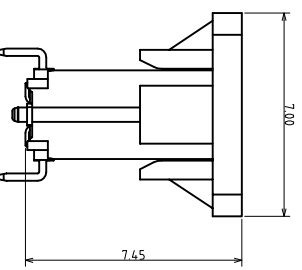
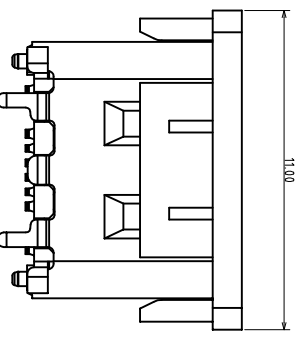
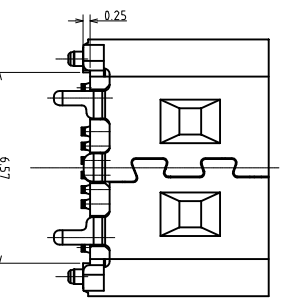
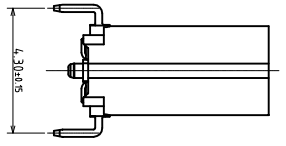
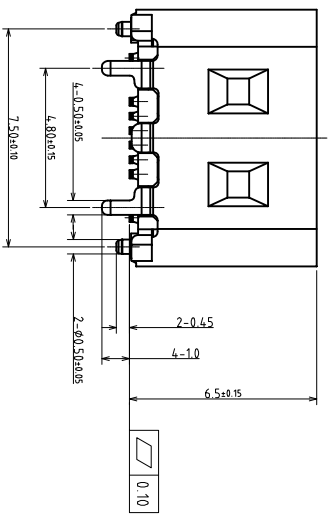
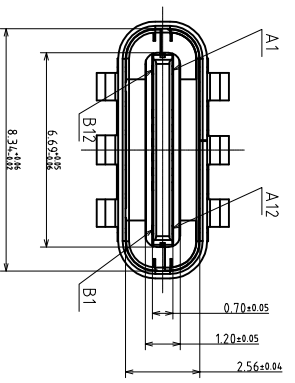


# RoHS 客户图

目錄 MAPX	变更内容 MODIFICATION	日期 DATE
A0	NEW	09-10-20



5	CAP	LCP	UL94V-0,COLOR:BLACK;
4	SHELL	SUS	0.75um NI PLATED OVERALL
3	HOUSING	LCP	UL94V-0,COLOR:BLACK;
2	METAL PLATE	SUS	N/A
1	TERMINAL	COPPER ALLOY	0.75um NI PLATED OVERALL 0.025um Au PLATED CONTACT AREA; GOLD FLASH ON SOLDER AREA;
ITEM	PART NAME	MATERIAL	DESCRIPTION

A1	A2	A3	A4	A5	A6	A7	A8	A9	A10	A11	A12
GND	Vbus	CC1	Dp1	Dn1	SBUT	Vbus					GND
B12	B11	B10	B9	B8	B7	B6	B5	B4	B3	B2	B1
	Vbus	SBU2	Dn2	Dp2	CC2	Vbus					GND

RECOMMENDED P.C.B. LAYOUT  
TOLERANCE ±0.05mm

## 产品图

公差一览表  
TOLERANCE UNLESS OTHERWISE SPECIFIED

X	±0.30	X'	±5'
X	±0.25	X''	±2'
XX	±0.30	XX'	±1'
XXX	±0.15	XXX'	±0.5'

单位 UNITS	MM	制图 DRAWING	王冠	产品料号 PRODUCT PART NO.	16001-UCAF001-X
比例 SCALE	1:1	审核 CHKD	雷永健	产品名称 PRODUCT NO.	TYPE C 16P母座180度SMT H=6.5
日期 DATE	2009/10/20	批准 APPD	雷永健	角法 VIEW	
				版本 VER	A0

## 深圳市鑫风雷电子有限公司