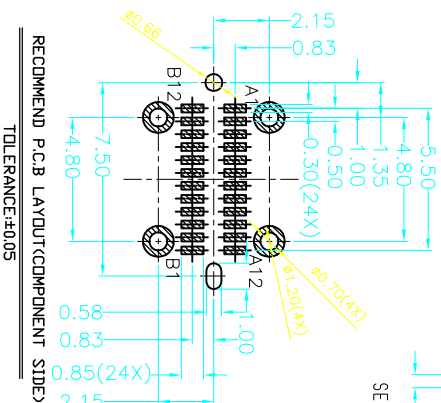
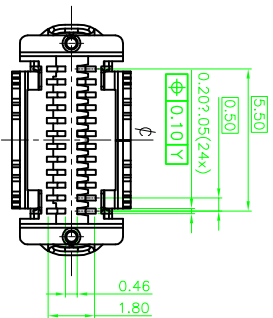
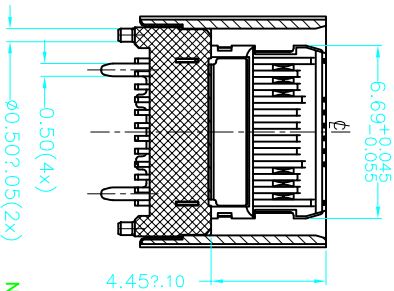
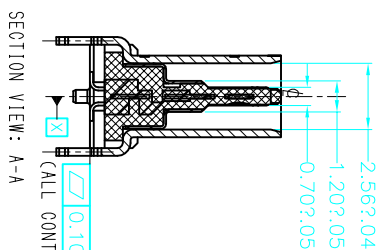
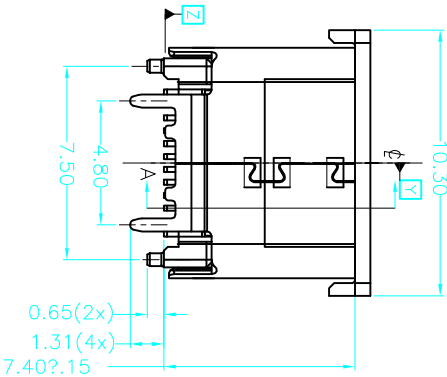
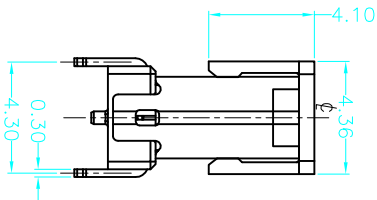
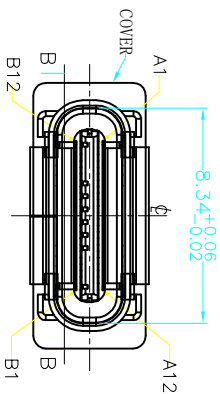


1 ROHS

2 客户图

3 4 5 6 7 8 9 10

目錄 MAPX	修改內容 MODIFICATION	日期 DATE
A0	NEW	09-10-20



RECOMMEND PCB LAYOUT(COMPONENT SIDE)
TOLERANCE:±0.05

Pin No.	Signal name	Pin No.	Signal name
A12	GND	B1	GND
A11	SSRXp2	B2	SSTXp2
A10	SSRXn2	B3	SSTXn2
A9	VBUS	B4	VBUS
A8	SBUS1	B5	CC2
A7	Dn1	B6	Dp2
A6	Dp1	B7	Dn2
A5	CC1	B8	SBUS2
A4	VBUS	B9	VBUS
A3	SSTXn1	B10	SSRXn1
A2	SSTXp1	B11	SSRXp1
A1	GND	B12	GND

NOTE:

- MATERIAL:
 - INSULATOR: TEMPERATURE PLASTIC UL94 V-0; Black Color
 - CONTACT: COPPER ALLOY, GOLD/Matte Tin PLATED.
 - OUTER SHELL: STAINLESS STEEL/Nickel PLATED.
 - GROUND SHIELD: STAINLESS STEEL.
 - MID PLATE: STAINLESS STEEL.
- ELECTRICAL CHARACTERISTICS:
 - CONTACT RESISTANCE: 40mΩ Max FOR INITIAL.
 - CONTACT CHANGE AFTER DURABILITY TEST
 - CONTACT CURRENT RATING: 5A
 - DIELECTRIC WITHSTANDING VOLTAGE: 100V AC R.M.S.
 - INSULATION RESISTANCE: 100MΩ Min
 - OPERATING TEMPERATURE: -40°C ~ 85°C
- MECHANICAL CHARACTERISTICS:
 - MATING FORCE: 5~20 N
 - UNMATED FORCE: INITIAL 8~20N; 6~20N AFTER DURABILITY TEST
 - DURABILITY: 10,000 CYCLES
 - THE MATERIAL MUST BE FREE FROM RED PHOSPHORUS.

产品图

PRODUCT CHART.DWG

深圳市鑫风雷电子有限公司
Shenzhen xinfenglei Electronic Co., Ltd

公差一览表		单位		MM	
TOLERANCE UNLESS OTHERWISE		UNITS		MM	
X	±0.30	X	±5°	比例	
X	±0.25	X	±2°	SCALE	
XX	±0.30	XX	±1°	日期	2009/10/20
XXX	±0.15	XXX	±0.5°	核准	雷永健