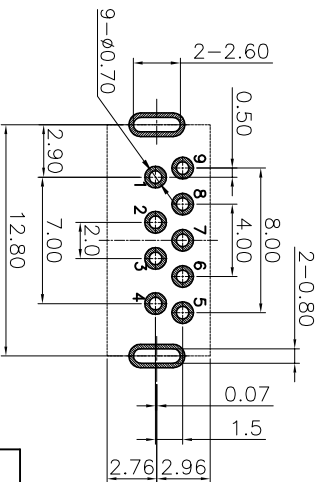
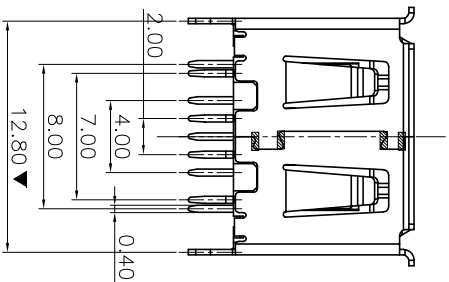
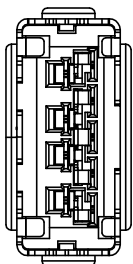
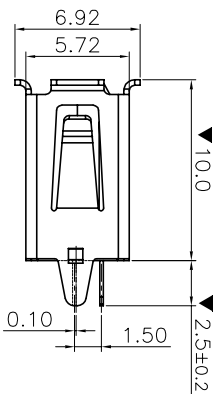
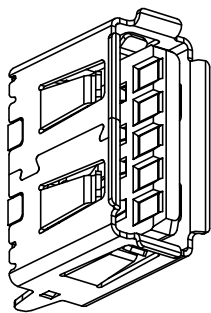
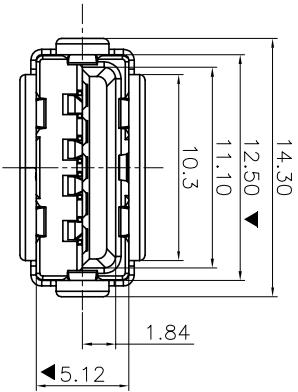
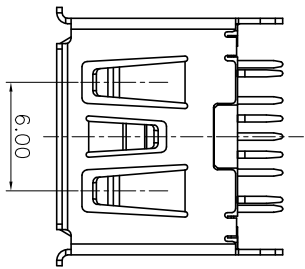


ROHS 客户图



TOLERANCE: ±0.05,
RECOMMENDED PCB LAYOUT
(TOP VIEW)

NOTES:

- 1 MATERIAL:**
 1.1 HOUSING: HIGH TEMPERATURE THERAL PLASTIC.
 1.2 SPRING CONTACT: COPPER ALLOY.
 1.3 FLAT CONTACT: COPPER ALLOY
 1.4 SHELL : COPPER ALLOY.
 1.5 COVER: HIGH TEMPERATURE THERAL PLASTIC.
- 2 FINISH:**
 2.1 CONTACT: (SEE P/N.), [50μ] MIN. NICKEL UNDERPLATING OVER ALL.
 2.2 SHELL: [50μ] MIN. SOLDERABILITY NICKEL UNDERPLATING OVER ALL.

目錄 MAPX	变更内容 MODIFICATION	日期 DATE
A0	NEW	09-10-20

产品图

深圳市鑫风雷电子有限公司

公差一览表
PRODUCT CHART DWG

公差一览表 TOLERANCE UNLESS OTHERWISE SPECIFIED	单位 UNITS	MM	制图 DRAWING	王冠	产品料号 PRODUCT PART NO.	00505-13AR020-A
X ±0.30	X'	±5'	审核 CHECK	雷永健	产品名称 PRODUCT NO.	HSR33.0 AF 180度直脚有翅=10.0脚长2.5脚长2.5
.XX ±0.25	.X'	±2'	核准 APPD	雷永健	角法 VIEW	版本 VER
.XXX ±0.15	.XXX'	±0.5'	日期 DATE	2009/10/20	版本 VER	A0

PIN NO.	PIN 5	PIN 6	PIN 7	PIN 8	PIN 9
SIGNAL NAME	STDA_SSRX-	STDA_SSRX+	GND_DRAIN	STDA_SSTX-	STDA_SSTX+
REMARK	USB 3.0 CONTACT PINS				

PIN NO.	PIN 1	PIN 2	PIN 3	PIN 4
SIGNAL NAME	V BUS	D-	D+	GND
REMARK	USB 2.0 CONTACT PINS			