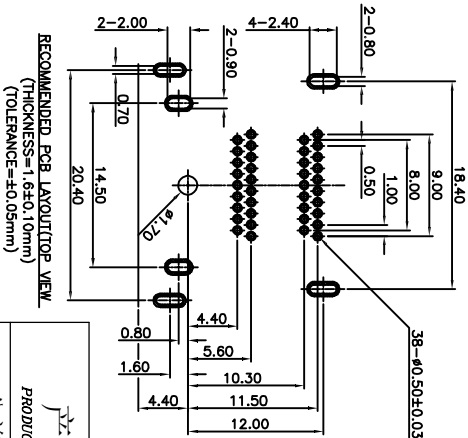
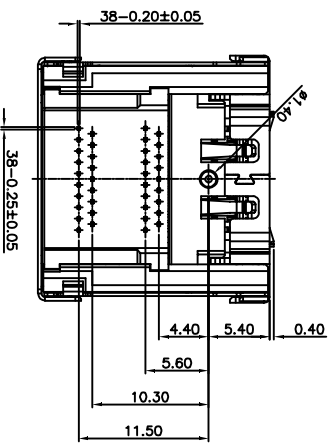
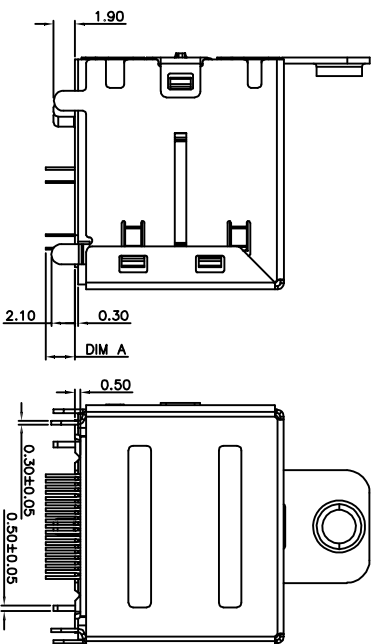
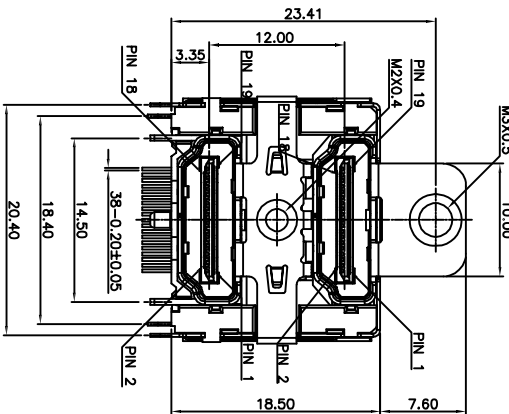
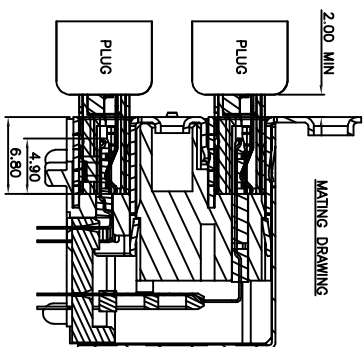
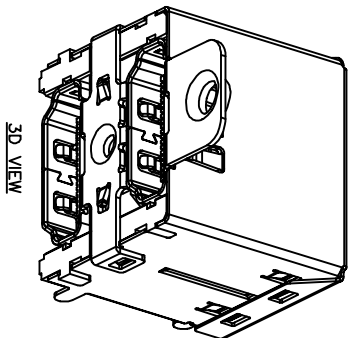
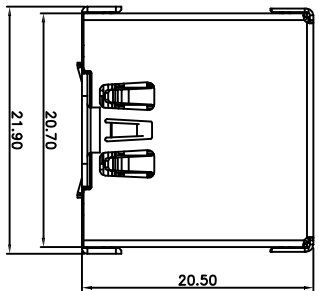


ROHS 客户图



目錄 MAPX	变更内容 MODIFICATION	日期 DATE
A0	NEW	09-10-20

- NOTES:
- 1.MATERIAL SPECIFICATION
 - 1-1.Outlet SHELL: SUS430 T=0.30mm
 - 1-2.LOWER SHELL: SUS304 T=0.5mm
 - 1-3.UPPER SHELL: SUS304 T=0.5mm
 - 1-4.HOUSING: LCP+30%GF BLACK UL94V-0
 - 1-5.LOWER HOUSING: LCP+30%GF BLACK UL94V-0
 - 1-6.UPPER HOUSING: LCP+30%GF BLACK UL94V-0
 - 1-7.LOWER TERMINAL: C2680R-H T=0.20mm
 - 1-8.UPPER TERMINAL: C2680R-H T=0.20mm
 - 2.PLATING SPECIFICATION
 - 2-1.CONTACT: Ni50μ" UNDER PLATED.GOLD FLASH PLATED ON THE FUNCTIONAL AREA OF CONTACT.GOLD PLATING OR TIN ON SOLDER AREA.
 - 2-2.SHELL: NICKEL PLATED 50μ" MIN.
 - 3.MECHANICAL PERFORMANCE
 - 3-1.INSERTION FORCE: 44.1N (4.5 KGF) MAX.
 - 3-2.WITHDRAWAL FORCE: 4.9N~25N(0.5KGf~2.5KGf).
 - 3-3.DURABILITY: 5000 CYCLES.
 - 4.ELECTRICAL PERFORMANCE
 - 4-1.CURRENT RATING: 0.3A
 - 4-2.ILLCR: CONTACT: 30mΩ MAX(INITIAL), SHELL: 50mΩ MAX(INITIAL).
 - 4-3.INSULATION RESISTANCE: A:UNMATED: 100MΩ MIN. AT 150V DC. B:MATED: 10MΩ MIN. AT 150V DC.
 - 4-4.DIELECTRIC WITHSTAND VOLTAGE: 150V AC/60S(UNMATED), 250V AC/60S(UNMATED).
 - 5.IR REFLOW: THE PEAK TEMPERATURE ON BOARD SHALL BE MAINTAINED FOR 10 SECONDS AT 260±5°C.
 - 6.OPERATING TEMPERATURE RANGE: -35°C~105°C(WITHOUT LOSS FUNCTION).
 - 7.ROHS COMPLIANT OR HALOGEN FREE COMPLIANT.

PIN	SIGNAL ASSIGNMENT	PIN	SIGNAL ASSIGNMENT
1	TMDS Data2+	11	TMDS Clock Shield
2	TMDS Data2 Shield	12	TMDS Clock-
3	TMDS Data2-	13	CEC
4	TMDS Data1+	14	Reserved (I/O, w/ Shield)
5	TMDS Data1 Shield	15	SCL
6	TMDS Data1-	16	SDA
7	TMDS Data0+	17	DDC/CEC Ground
8	TMDS Data0 Shield	18	+5V Power
9	TMDS Data0-	19	Hot Plug Detect
10	TMDS Gnd+		

产品图

PRODUCT CHART DWG

公差一览表

TOLERANCE UNLESS OTHERWISE	UNIT	SCALE
X	±0.30	±5'
X	±0.25	±2'
XX	±0.30	±1'
XXX	±0.15	±0.5'

深圳市鑫风雷电子有限公司
Shenzhen xinfenglei Electronic Co., Ltd

单位 UNITS	MM	制图 DRAWING	王冠	产品料号 PRODUCT PART NO.	11015-HDMI5C5-X
比例 SCALE	1:1	审核 CHKD	雷永健	产品名称 PRODUCT NO.	HDMI A TYPE2.0 90度母座插板带弹耳带螺钉孔 CH-23.4
日期 DATE	2009/10/20	核准 APPD	雷永健	角法 VIEW	
				版本 VER	A0