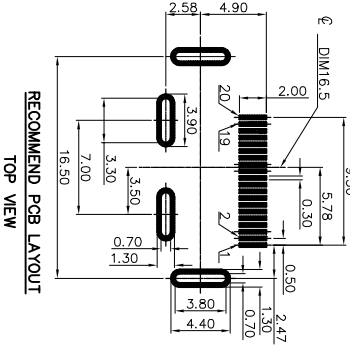
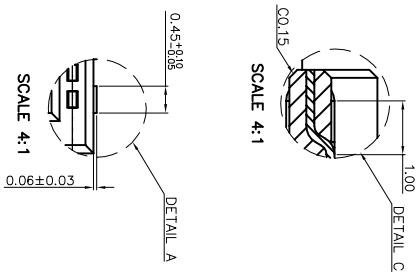
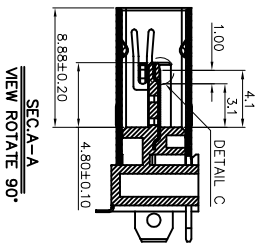
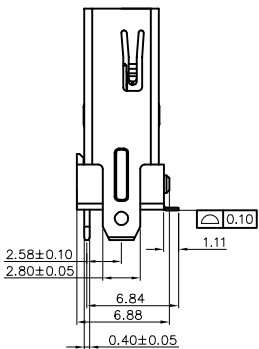
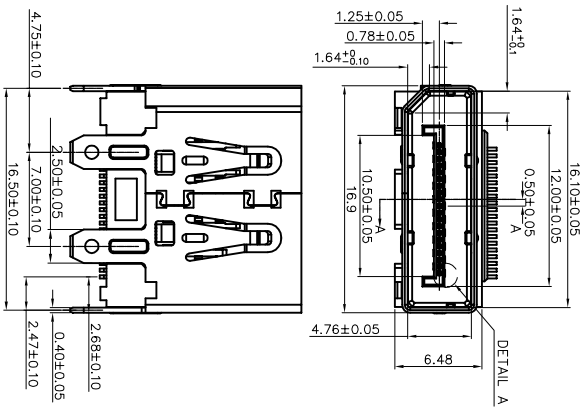
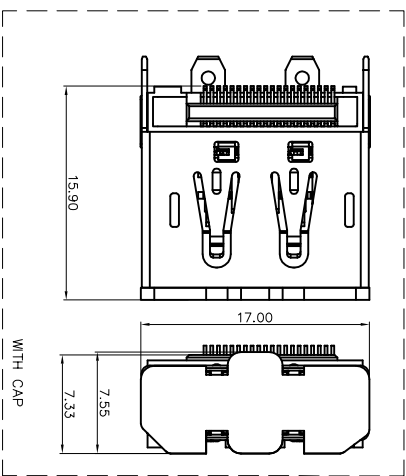
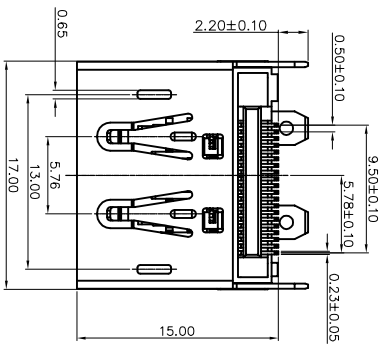


RoHS 客户图



- MATERIALS**
- HOUSING : L.C.P. (UL 94V-0), BLACK
 - TERMINAL : BRASS (C2680), GOLD FLASH PLATING ON CONTACT AREA, MATTE TIN PLATING ON SOLDER TAIL, UNDER NICKEL PLATING OVER ALL.
 - SHELL : S50C, NICKEL PLATING
- SPECIFICATION**
- CURRENT RATING : 0.5 A MAX.
 - DIELECTRIC WITHSTANDING VOLTAGE : 500V AC R.M.S. FOR ONE MINUTE.
 - INSULATION RESISTANCE : 100M OHMS MIN.
 - CONTACT RESISTANCE : 30m OHMS MAX.
 - OPERATING TEMPERATURE : -20C TO +85C.
 - INSERTION FORCE : 4.5kgf MAX.
 - EXTRACTION FORCE : 1.0~4.0kgf MIN.
 - SALT SPRAY : 24 HOURS PASS.
 - REFLOW SOLDERING(SMD COMPONENT) OVEN TEMPERATURE:260°C.5SEC

产品图

深圳市鑫风雷电子有限公司

公差一览表		单位		制图		产品料号	
TOLERANCE UNLESS OTHERWISE	UNITS	MM	DRAWING	王冠	PRODUCT PART NO.	19011-DPAF004-A	
X ±0.30	X'	±5'	审核	雷永健	产品名称	Displayport 母180度SMT9-6脚长2.2 H=15	
X ±0.25	X'	±2'	比例	1:1	角法		
.XX ±0.20	.XX'	±1'	日期	2009/10/20	版本	A0	
.XXX ±0.15	.XXX'	±0.5'	DATE	APPD	雷永健		

目錄	变更内容	日期
MAPX	MODIFICATION	DATE
A0	NEW	09-10-20