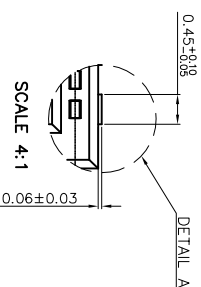
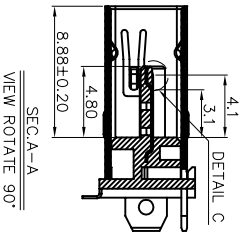
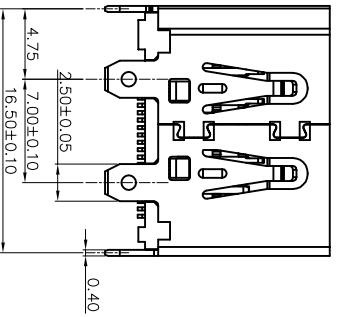
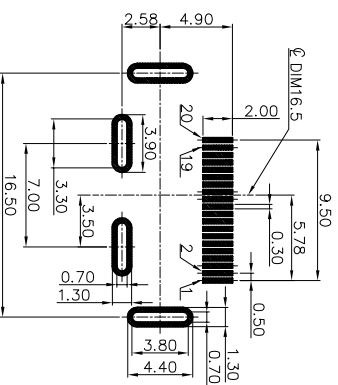
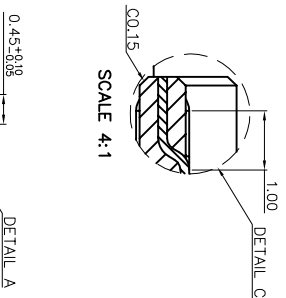
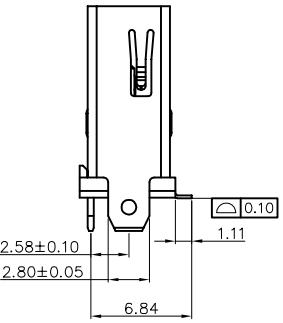
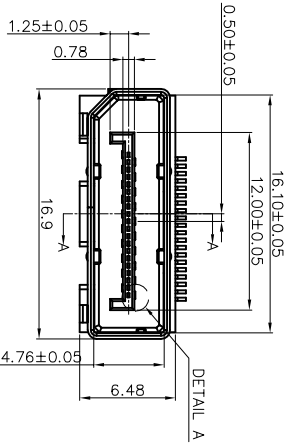
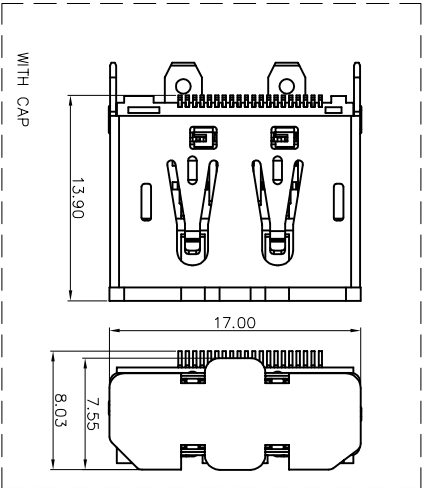
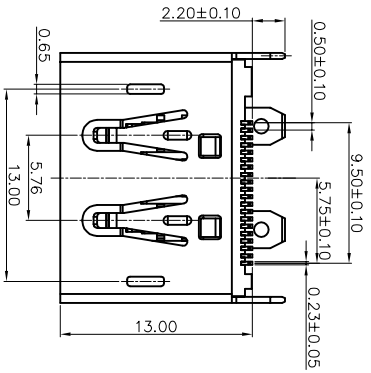


ROHS 客户图



- MATERIALS**
1. HOUSING : L.C.P. (UL 94V-0), BLACK
 2. TERMINAL : BRASS (C2680)
 3. GOLD FLASH PLATING ON CONTACT AREA, MATTE TIN PLATING ON SOLDER TAIL, UNDER NICKEL PLATING OVER ALL.
 3. SHELL : S50C, NICKEL PLATING
- SPECIFICATION**
1. CURRENT RATING : 0.5 A MAX.
 2. DIELECTRIC WITHSTANDING VOLTAGE : 500V AC R.M.S. FOR ONE MINUTE.
 3. INSULATION RESISTANCE : 100M OHMS MIN.
 4. CONTACT RESISTANCE : 30m OHMS MAX.
 5. OPERATING TEMPERATURE : -20°C TO +85°C.
 6. INSERTION FORCE : 4.5kgf MAX.
 7. EXTRACTION FORCE : 1.0~4.0kgf MIN.
 8. SALT SPRAY : 24 HOURS PASS.
 9. REFLOW SOLDERING(SMD COMPONENT) OVEN TEMPERATURE: 260°C.5SEC

产品图

深圳市鑫风雷电子有限公司

公差一览表		单位		制图		产品料号	
TOLERANCE UNLESS OTHERWISE		UNITS		DRAWING		PRODUCT PART NO.	
X	±0.30	X'	±5'	王冠	19011-DPAF002-A		
X	±0.25	X'	±2'	审核	雷永健		
XX	±0.20	XX'	±1'	核准	雷永健		
XXX	±0.15	XXX'	±0.5'	日期	2009/10/20		
		比例		角法		版本	
		SCALE		VIEW		A0	
		1:1					