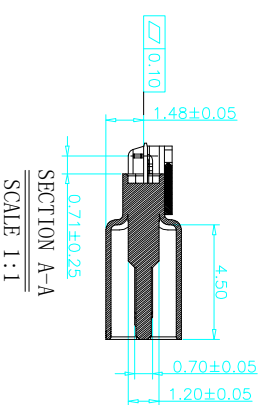
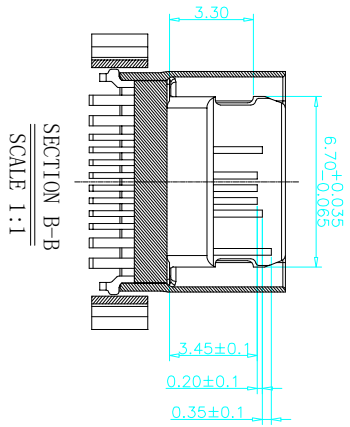
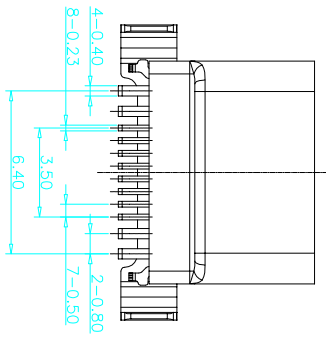
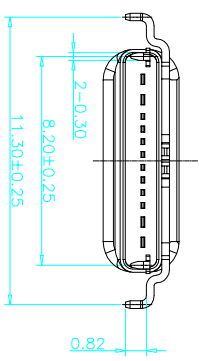
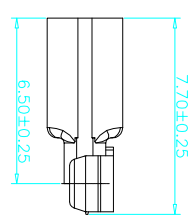
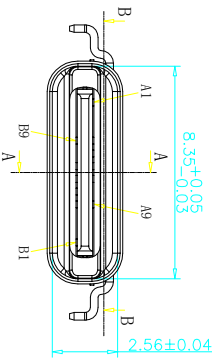
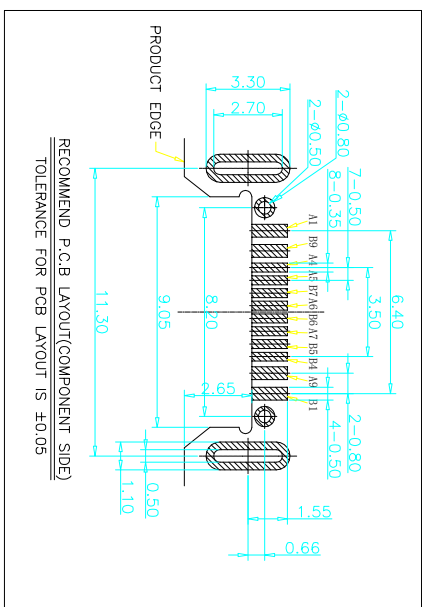
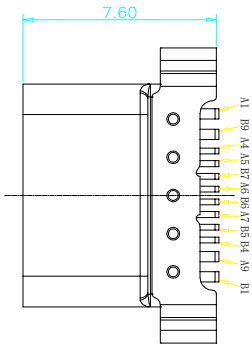


# RoHS 客户图



USB TYPE C PIN ASSIGNMENTS

PIN NUMBER	SIGNAL NAME	PIN NUMBER	SIGNAL NAME
A1	GND	B9	VBUS
A4	VBUS	B7	DD2
A5	CC1	B6	D@2
A6	D@1	B5	CC2
A7	D@1	B4	VBUS
A9	VBUS	B1	GND

TABLE:

NO	PART	QTY
1	SHELL-1	1
2	SHELL-2	1
3	CONTACT	8
4	MD PLATE	1
5	MD HOUSING	1

公差一览表

公差	公差	公差	公差
XX	XX	XX	XX
±0.30	±0.25	±0.20	±0.15
±5°	±2°	±1°	±0.5°

产品图

Product Chart DWG

深圳市鑫风雷电子有限公司

Shenzhen xinfenglei Electronics Co., Ltd

王冠

雷永健

雷永健

2009/10/20

00101-UCAR025-X

00101-UCAR025-X

mailto:sale@xfll.com

www.xfll.com

目録	变更内容	日期
MAPX	MODIFICATION	DATE
A0	NEW	09-10-20

- 备注 (NOTE):
- 电气特性:
    - 接触电阻: 40mΩ Max, 允许10mΩ变化量. 测试条件: 20mV, 100mA下测量.
    - 接触电流: 3A VBUS引脚; 1.25A用于GND引脚; 其他引脚为0.25A.
    - 额定电压: 30V.
    - 耐受电压: 100V<sub>R.M.S.</sub>
    - 绝缘电阻: 至少100兆欧.
  - 机械性能:
    - 插入力: 0.51-2.04kg
    - 拔出力: 0.82-2.04kg
    - 耐久性: 0.61-2.04kg
    - 插拔次数: 10000次.
    - 工作环境: -20°C to +85°C.
  - 材质明细:
    - 胶芯: LCP/黑色; 端子: C7025/镀半金锡110"
    - 中夹片: 不锈钢/素材;
    - 外壳: 拉伸不锈钢/镀镍;
    - 两脚护套外壳: 不锈钢/镀镍;
    - 环保要求: RoHS+REACH (1.2K) 卷)