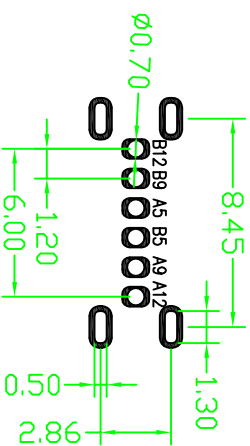
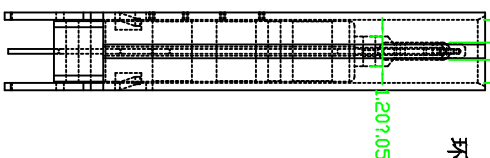
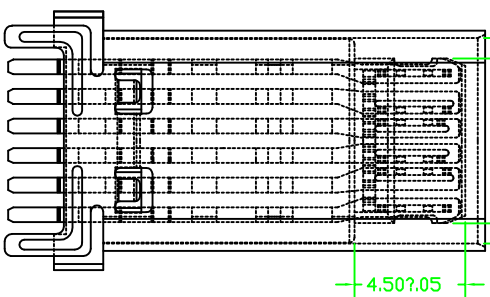
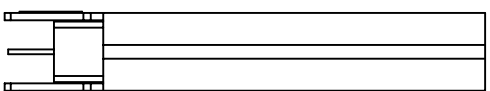
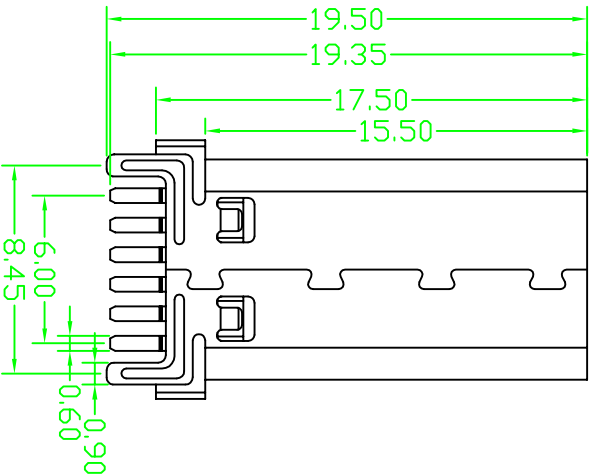
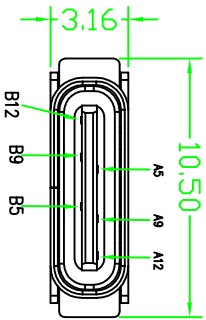


# ROHS 客户图

A5	CC1	B12	GND
A9	VBUS	B9	VBUS
A12	GND	B5	CC2
PIN	SIGNAL NAME	PIN	SIGNAL NAME

目錄 MAPX A0	設定內容 MODIFICATION NEW	日期 DATE 09-10-20
------------------	-----------------------------	------------------------



NOTES:  
特性: Specifications  
电器 Electrical:

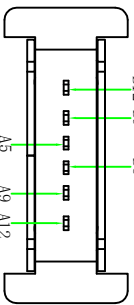
接触阻抗: 初始最大不超过40mΩ Max, 测试后变化值不超过10mΩ Max  
 耐电压: AC200V 60S/MIN, 0.5mA Max; DC500V, 60S/MIN, 100CMax  
 绝缘阻抗: 100M ohms MIN  
 额定电流: 2A MAX  
 额定电压: 10V MAX

材料: Material:  
 Molding: LCP料黑色耐高温塑胶  
 端子: C2680 T=0.20mm  
 外壳: SUS201 T=0.30mm

电镀规格:  
 端子: 半金锡, 接触点镀金1u", 焊线处镀锡40-80u".  
 外壳: 镀镍80u"  
 环保要求: ROHS, REACH标准.

RECOMMENDED P.C.B. LAYOUT  
 TOLERANCE UNSPECIFIED ±0.05mm

PART NO: 8001F-0600016-A  
 SERISE: TYPE C  
 Receptacle  
 serial number  
 Variabler



### 产品图

深圳市鑫风雷电子有限公司  
 Shenzhen xinfenglei Electronic Co., Ltd

公差一览表 TOLERANCE UNLESS OTHERWISE SPECIFIED		单位 UNITS		比例 SCALE		日期 DATE		制图 DRAWING		审核 CHD		核准 APPD		产品料号 PRODUCT PART NO.		产品名称 PRODUCT NO.		角法 VIEW		版本 VER	
X	±0.30	X	±5°	1:1	2009/10/20	王冠	雷永健	雷永健	雷永健	8001F-0600016-A	TYPE C 6P母座180度插板1=17.5										
XXX	±0.15	XXX	±1°																		