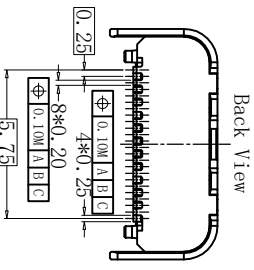
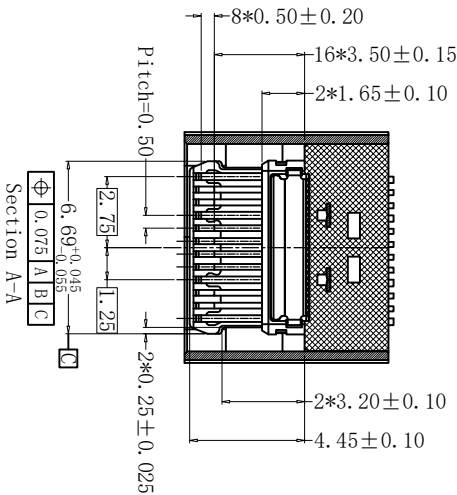
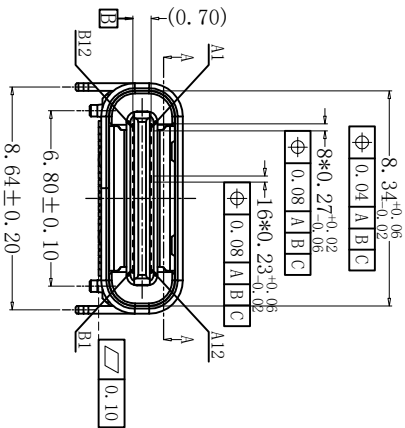
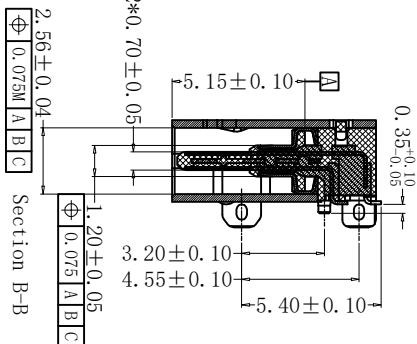
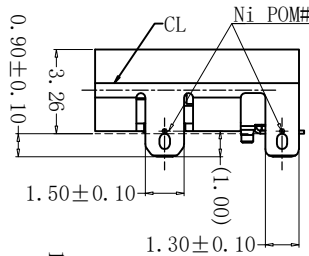
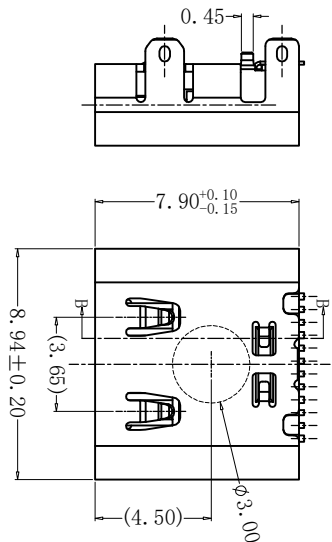


ROHS 客户图



NO.	PART NAME	MATERIAL	FINISH
6	EMI	SUS301-3/4H, T=0.10mm	No Plating
5	Shell	SUS304-1/2H, T=0.30mm	50μ"Ni Min.
4	GroundBar	SUS301-1/2H, T=0.15mm	No Plating
3	Down Contact	C7025 TM04, T=0.12mm	Au/50μ"Ni Min.
2	Top Contact	C7025 TM04, T=0.12mm	Au/50μ"Ni Min.
1	Housing	LCP or PA10T	UL 94 V-0

目錄 MAPX	修改內容 MODIFICATION	日期 DATE
A0	NEW	09-10-20

- NOTE:
1. MATERIAL:
 - 1.1 INSULATOR: TEMPERATURE PLASTIC UL94 V-0; Black Color
 - 1.2 CONTACT: COPPER ALLOY. GOLD/Matte Tin PLATED.
 - 1.3 OUTER SHELL: STAINLESS STEEL/Nickel PLATED.
 - 1.4 GROUND SHIELD: STAINLESS STEEL.
 - 1.5 MID PLATE: STAINLESS STEEL.
 2. ELECTRICAL CHARACTERISTICS:
 - 2.1 CONTACT RESISTANCE: 40mΩ Max FOR INITIAL.
 - 2.2 CONTACT CHANGE AFTER DURABILITY TEST 10mΩ
 - 2.3 CONTACT CURRENT RATING: 5A
 - 2.4 DIELECTRIC WITHSTANDING VOLTAGE: 100V AC R.M.S.
 - 2.5 INSULATION RESISTANCE: 100MΩ Min
 - 2.6 OPERATING TEMPERATURE: -40°C ~ 85°C
 3. MECHANICAL CHARACTERISTICS:
 - 3.1 MATING FORCE: 5~20 N.
 - 3.2 UNMATED FORCE: INITIAL 8~20N; 6~20N AFTER DURABILITY TEST
 - 3.3 DURABILITY: 10,000 CYCLES
 - 3.4 THE MATERIAL MUST BE FREE FROM RED PHOSPHORUS.

Pin No.	Signal name	Pin No.	Signal name
A12	GND	B1	GND
A11	SSRXP2	B2	SSTXP2
A10	SSRXX2	B3	SSTXN2
A9	VBUS	B4	VBUS
A8	SBUI	B5	CC2
A7	Dn1	B6	Dp2
A6	Dp1	B7	Dn2
A5	CCI	B8	SBU2
A4	VBUS	B9	VBUS
A3	SSTXn1	B10	SSRXP1
A2	SSTXP1	B11	SSRXX1
A1	GND	B12	GND

PART NO.: 8001F-2400020-X

SERISE: TYPE C
 Receptacle
 serial number
 Variabler

产品图
 PRODUCT CHART DWG

公差一览表
 TOLERANCE UNLESS OTHERWISE

公差	单位	比例	日期
XXX	±0.15	XXX	±0.5
XX	±0.30	XX	±2
X	±0.25	X	±1
X	±0.50	X	±1

深圳市鑫风雷电子有限公司
 Shenzhen xinfenglei Electronic Co., Ltd

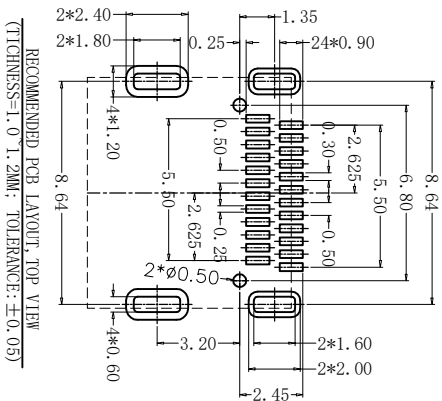
制图: 王冠
 审核: 雷永健
 日期: 2009/10/20

产品料号: 8001F-2400020-X
 产品名称: TYPE C 24P母座板上双贴 I=7.9 有弹片
 制法: 角法
 版本: A0

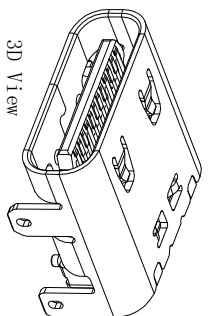
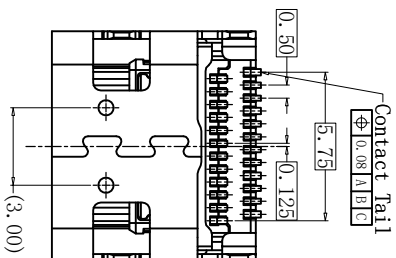
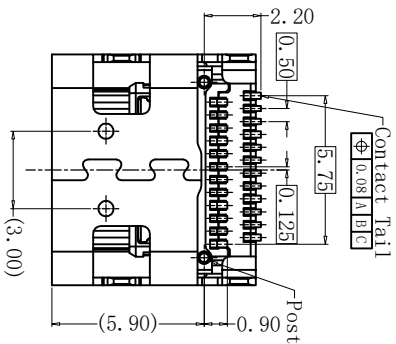
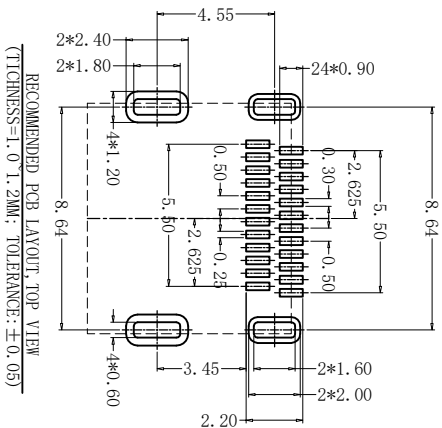
RoHS 客户图

目録 MAPX A0	設定内容 MODIFICATION NEW	日期 DATE 09-10-20
------------------	-----------------------------	------------------------

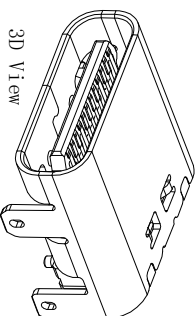
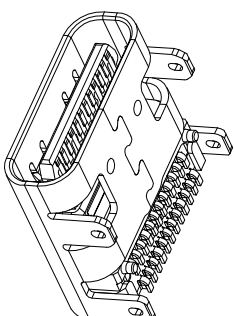
有定位柱



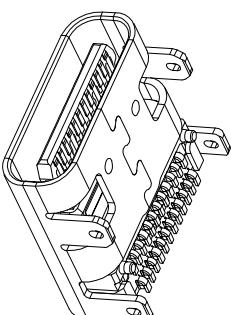
无定位柱



3D View



3D View



8001F-2400020-A 有柱
8001F-2400020-B 无柱

产品图

PRODUCT CHART DWG

公差一览表

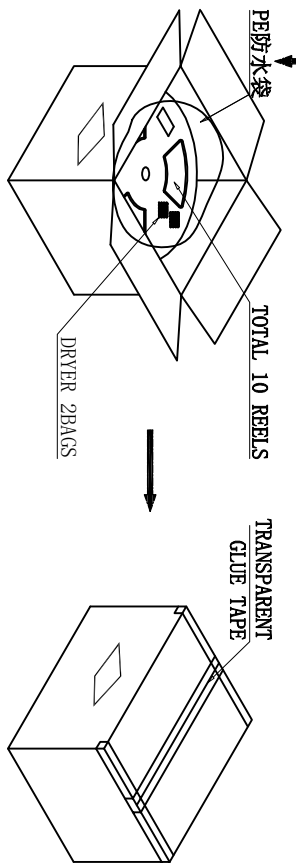
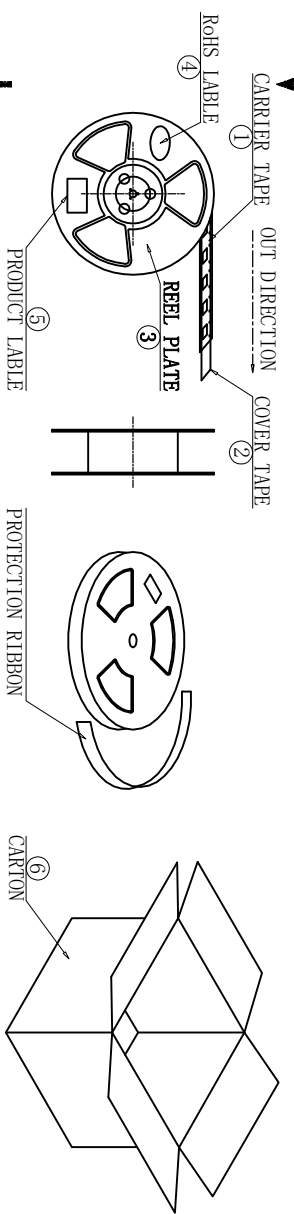
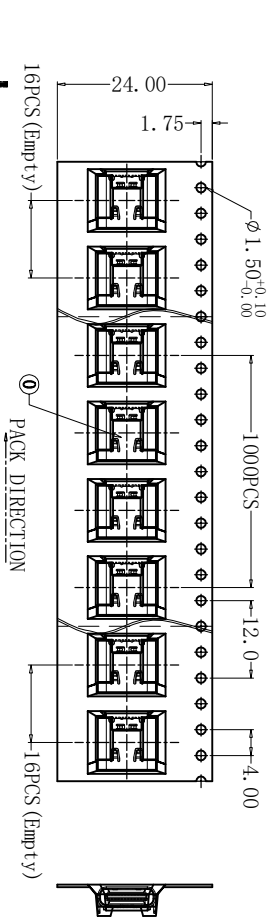
TOLERANCE UNITS	UNITS	公差
X	±0.30	X'
XX	±0.25	XX'
XXX	±0.15	XXX'

深圳市鑫风雷电子有限公司
Shenzhen xinfenglei Electronic Co., Ltd

单位 UNITS	MM	制图 DRAWING	王冠	产品料号 PRODUCT PART NO.	8001F-2400020-X
比例 SCALE	1:1	审核 CHKD	雷永健	产品名称 PRODUCT NO.	TYPE C 24P母座板上双贴 1=7.9 有弹片
日期 DATE	2009/10/20	核准 APPD	雷永健	角法 VIEW	⊕ ⊖
				版本 VER	A0

RoHS 客户图

目錄 MAPX	變更內容 MODIFICATION	日期 DATE
A0	NEW	09-10-20



NO.	NAME	SPEC	Q'TY
①	TYPE C RECEPTACLE		10000PCS/CARTON
①	CARRIER TAPE	W=24mm, L=0.40mm	1000PCS/PLATE
②	COVER TAPE	W=21.3mm	10PLATES/CARTON
③	REEL PLATE	φ330*100*24.4mm	10PCS/CARTON
④	RoHS LABEL		10PCS/CARTON
⑤	PRODUCT LABELER		10PCS/CARTON
⑥	CARTON	350*340*310mm	1PCS/PACKAGE

- 说明:
1. 每卷前后各空16PCS,尾部用美纹胶纸封住;
 2. 将产品放满盘后,再卷一圈保护带,用美纹胶纸将其封住,并贴上IPCS物料标签;
 3. 每10卷盘一叠共10000Pcs并装入1个外箱内;
 4. 在搬运过程中要轻拿轻放;
 5. 在运输中不可堆放过多(1.8M最高),不可重压;
 6. 跌落测试条件:
成品箱从1.2米高度自由落体(一角三棱六面):
a. 产品不可跑出下带凹槽;
b. 产品不可有摔伤,变形;
c. 内包装材料不可严重破损.

产品图

Product Chart DWG
Shenzhen xinfenglei Electronic Co., Ltd

公差一览表 TOLERANCE UNLESS OTHERWISE		单位 UNITS	比例 SCALE	日期 DATE	制图 DRAWING	审核 CHKD	批准 APPD	产品料号 PRODUCT PART NO.	产品名称 PRODUCT NO.	角法 VIEW	版本 VER
X	±0.30	X	1:1	2009/10/20	王冠	雷永健	雷永健	8001F-2400020-X	TYPE C 24P母座板上双贴 L=7.9 有弹片	☉	A0
XX	±0.25	X'	±2								
XXX	±0.15	XXX'	±0.5								