

A1	GND	B12	GND
A4	VBUS	B9	VBUS
A5	CC1	B8	SBU2
A6	DP1	B7	DN2
A7	DN1	B6	DP2
A8	SBU1	B5	CC2
A9	VBUS	B4	VBUS
A12	GND	B1	GND
PIN	SIGNAL NAME	PIN	SIGNAL NAME

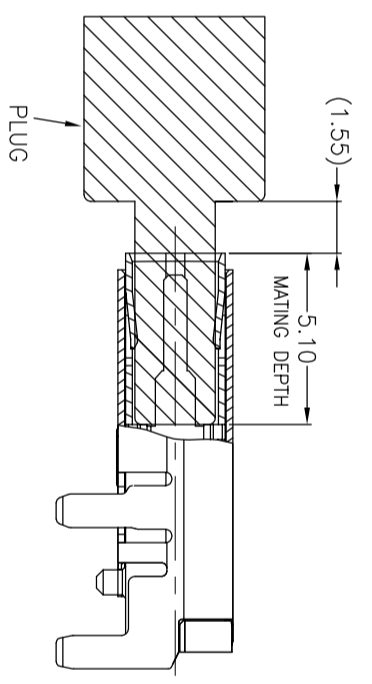
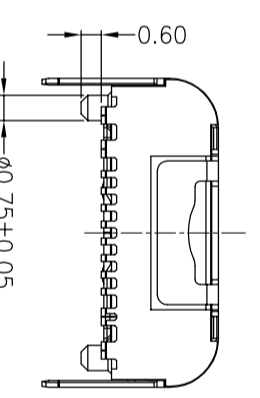
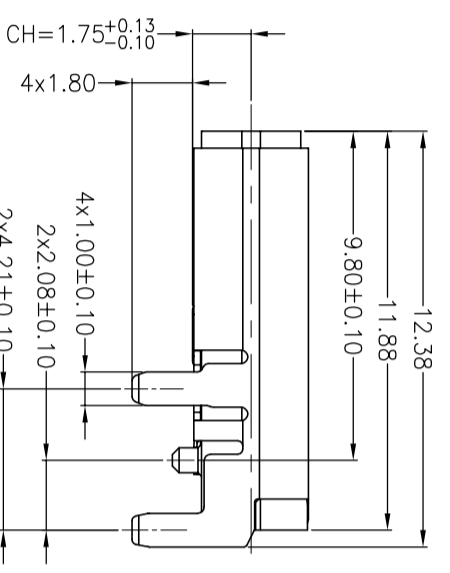
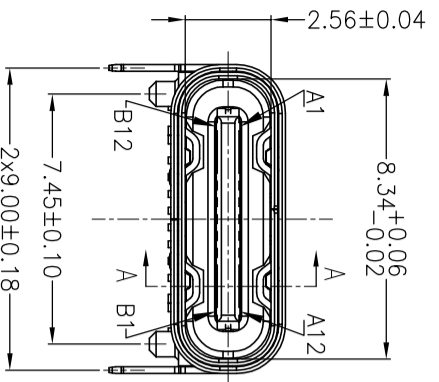
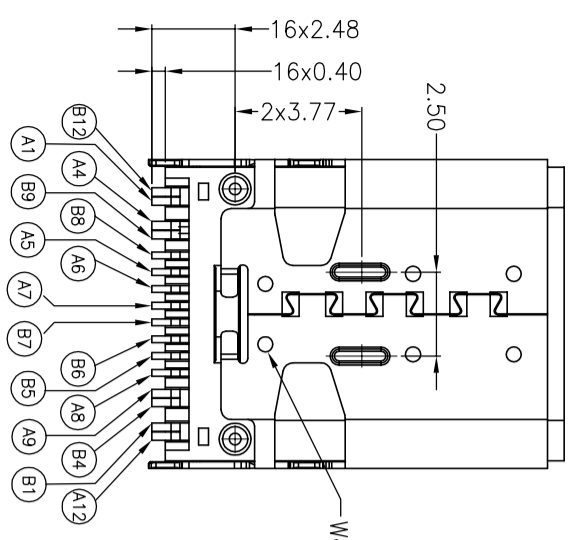
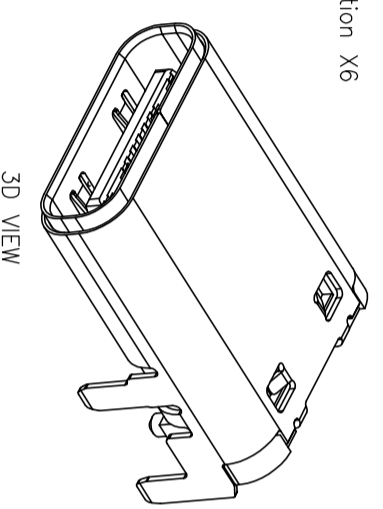


Table A:

NO.	PART NAME	MATERIAL	FINISHED	Q'TY
8	OUTER SHELL	Stainless steel	Gold flash plated on Solder area, Nickel 30u" Min. plated over all	1PC
7	INNER SHELL	Stainless steel	Solder Nickel 30u" Min.plated.	1PC
6	MID-PLATE	Stainless steel	Solder Nickel 30u" Min.plated.	1PC
5	Main housing	High-temperature materials	Black UL94V-0	1PC
4	Top housing	High-temperature materials	Black UL94V-0	1PC
3	Bottom housing	High-temperature materials	Black UL94V-0	1PC
2	Top terminal	Copper alloy	Au 30u" plated on contact area, G/F on solder area, Nickel 80u" Min. Under plated.	1SET
1	Bottom terminal	Copper alloy	Au 30u" plated on contact area, G/F on solder area, Nickel80u" Min. Under plated.	1SET



Welding position X6



## 产品图

PRODUCT CHART DWG

公差一览表  
TOLERANCE UNLESS OTHERWISE SPECIFIED

X.	±0.30	X.	±5°
.X	±0.25	X'	±2°
.XX	±0.30	.XX'	±1°
.XXX	±0.15	.XXX'	±0.5°

## 深圳市鑫风雷电子有限公司

单位 UNITS	MM	制图 DRAWING	王冠	产品料号 PRODUCT PART NO.	26017-UCAF003-X
比例 SCALE	1:1	审核 CHKD	雷永健	产品名称 PRODUCT NO.	TYPE C 16P母座板上双壳SMT L=12.4
日期 DATE	2009/10/20	核准 APPD	雷永健	角法 VIEW	☉ ☐
				版本 VER	A0